



## SAG Lockcases

Lockcases for interior doors

Lockcases for heavy duty doors

Lockcases for narrow stile doors

Lockcases for emergency exit and anti-panic doors



# SAG Lockcases

Lockcases for interior doors

Lockcases for heavy duty doors

Lockcases for narrow stile doors

Lockcases for emergency exit and anti-panic doors



© **Copyright 2010 by**

**Schulte-Schlagbaum AG  
Nevigeser Straße 100-110  
D-42553 Velbert  
Telefon: +49 (0) 2051 2086-0  
[www.sag-schlagbaum.com](http://www.sag-schlagbaum.com)**

- All previous editions become invalid with this catalogue.
- The information in this catalogue can be changed without prior notice.
- The compiling of the information in this catalogue has been carried out to the best of our knowledge and belief.  
Schulte-Schlagbaum AG does not assume any responsibility for the correctness and completeness of the information in this catalogue. In particular, Schulte-Schlagbaum AG cannot be held responsible for consequential damages on the grounds of incorrect or incomplete information.
- As errors can never be entirely excluded, despite stringent efforts, we are grateful at any time for any notifications.
- All rights reserved in the event of the granting of a patent or registration of a utility model.
- Subject to technical modifications without prior notice.

Doc.-No. 3-001-2 085 1.0  
Edition: 20110228  
Version: 1.0

# Company

1833 - 2008:

*175 Jahre*



**SCHULTE-SCHLAGBAUM AG**



**eccos<sup>pro</sup>**  
integration needs an expert

**nova<sup>com</sup>**  
integration needs an expert

**SCHÄNIS**

**edv service  
schaupp gmbh**

Schulte-Schlagbaum AG looks back on more than 175 years of company history, which is an effective proof of a successful management of the business risks.



# Company

## Structure

The Schulte-Schlagbaum Group concentrates its production and service activities on highly-developed components, systems and solutions for the locking and organisation of buildings. Our company has an international orientation and is active in three fields of business:

The **„Intelligent Locking Components“ segment** is where locking systems for doors, cupboards and lockers are developed and manufactured. With its “classic” SAFE-O-MAT®, SAG is the global leader in the field of locks for lockers in the leisure and fitness sector. SAG also occupies a leading position on the market for electronic transponder locks.

The **„Door Locks“ segment** develops and manufactures high-quality products and services in the field of lock and striking plate systems for heavy-duty and functional doors, residential doors, narrow stile doors and gates.

The subsidiary STS Systemtechnik Schänis GmbH, of Schänis in Switzerland, is active in this field and also occupies a leading market position in the field of mounting technology for sanitary facilities.

The **„Guest Management Systems“ segment** comprises the development and production of innovative access and payment systems, plus consulting, service and support for those systems, primarily in the hotel and leisure sectors. Our subsidiaries eccos pro gmbh and novacom software gmbh are among the leading system houses for recreational facilities in the German-speaking countries.

The infographic is set against a light teal background. It features three vertical panels: 'Guest-Management Systems' (blue), 'Intelligent Locking Components' (orange), and 'Door Locks' (teal). To the right is the SAG logo. Below the panels are logos for subsidiaries: eccospro, nova.com, edv service schaupp gmbh, and SCHÄNIS STS Systemtechnik Schänis.



### Company principles

The foundation of successful corporate development is the high level of motivation and the specialised technical competence of our employees, which we promote by providing, among other things, a broad range of training courses.

Market and customer requirements are the focal point of our development and sales activities. Our goal is to offer the user high-quality, innovative and, at the same time, efficient components and system solutions that give optimum support to his individual concepts. The constant development and improvement of our range of consulting and service activities is closely connected with this.

If the market and customer requirements can be fulfilled more efficiently by means of strategic partnerships, we enter into cooperative arrangements.

Our cooperation with our internal and external customers and partners is shaped by transparency, openness, honesty and authenticity.

The goals of the company are to serve the shareholders adequately and to grow and develop so profitably – also in the long term – that it can fulfil its social responsibility to safeguard and create jobs.

### Key region: In the “Club der Besten” (“Club of the Best”)

Schulte-Schlagbaum AG is a founder member of the Lower Bergisch association of enterprises “Die Schlüsselregion e. V.” (“The Key Region association”).

As an expertise network for security technology, the association was admitted to the initiative “Kompetenznetze Deutschland” (“Expertise Networks Germany”) of the Federal Ministry of Economics and Technology. The initiative calls itself the “Club der Besten”. Regional networks that represent regions with a special field of technological expertise can become members. The membership is regarded as a German seal of quality with international coverage.

Together with the Bochum University of Applied Sciences and the Bergisch University of Wuppertal, the association has begun to establish a centre of studies of the university in the Velbert/Heiligenhaus region. In future, up to 360 students will be able to take advantage of various engineering science study offers and complete an industrial training course at the same time as their studies.

Our company is participating actively in the process and is itself offering appropriate training vacancies. The objective continues to be to offer young people future prospects and at the same time provide the company with qualified employees who are up to the mark when it comes to the constantly increasing requirements.

## Lock Cases for doors



### Door Locks

The acknowledged high quality of our door locks is safeguarded by, among other things, permanent investment in the necessary testing technology. In the company's own testing centre, our door locks are subjected to extensive series of tests. Our tests are based on the currently prevailing norms and regulations (e.g. DIN, EN or MPA guidelines).

### VARIfree® transponder locking facility

The VARIfree® transponder fitting is an efficient and innovative alternative to the traditional cylinder lock in commercial buildings of all kinds.

The electronic locking system based on transponder technology works with digital data carriers. Irrespective of the manufacturer, key entitlements can be programmed autonomously on-site and changed again at any time. With a width of just 4 cm, the VARIfree® is so slim that it can be deployed anywhere. Mounting it couldn't be easier.



## ... and lockers



### SAFE-O-MAT® Deposit Lock - the globally successful storage system

The introduction of the SAFE-O-MAT® storage system was the start of a global success story. Whether it is used for cupboards or lockers, the SAFE-O-MAT® storage lock is proving to be the ideal system solution wherever safe temporary storage for clothing, valuables and other items is required.

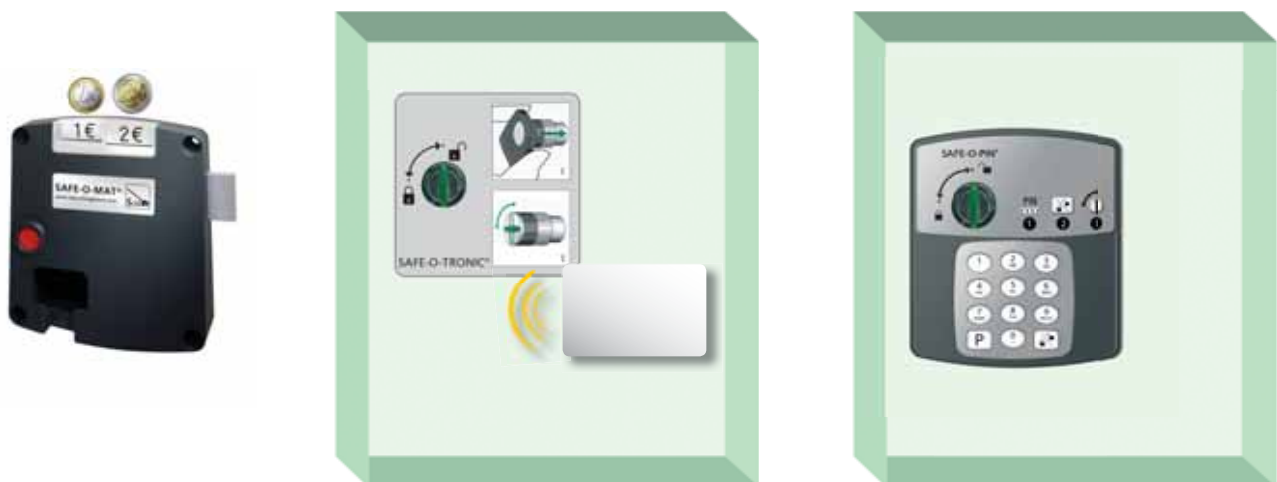
### SAFE-O-TRONIC® transponder lock for lockers

The SAFE-O-TRONIC® transponder lock is the ideal organisational solution if the "locker key" should also serve as a cashless payment method for the convenient use of all chargeable services and as a means of admission control or time recording.

### SAFE-O-PIN® PIN Code lock for lockers

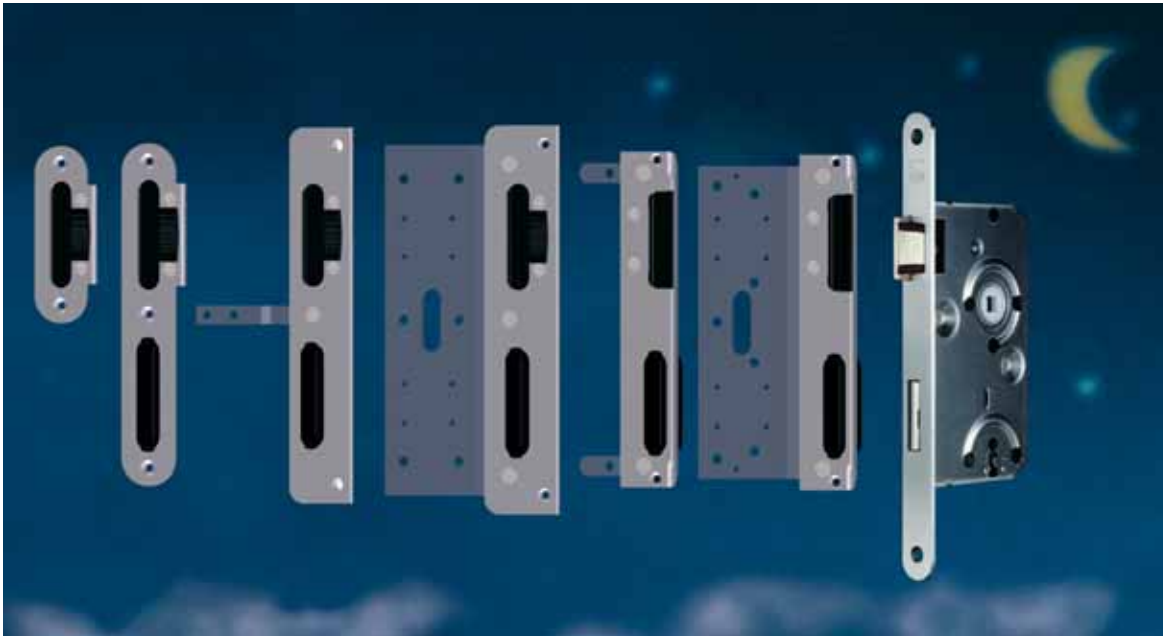
SAFE-O-PIN® is the perfect solution where for organisational reasons keys, key chains, cards or other data media cannot be used to secure lockers.

As an 'intelligent lock', SAFE-O-PIN® eliminates the need for any type of key or data medium. Entering a 4 to 10 digit key code (letters or numbers) is enough to lock or unlock the locker securely.





# Comfort



**Example:**  
**Whisper comfort noise reduction**

The Comfort line with noise reduction for SAG serial locks ensures that doors click shut quietly and “properly”. The whisper comfort equipment is available as standard for all SAG standard mortise locks for residential accommodation and building doors in accordance with DIN 18 251-1 classes 1-5.

**The perfect addition:**  
The adjustable SAG striking plate system with a noise-reducing plastic blocking edge enables a fine adjustment in addition and saves expensive reworking. Available for flat-mounted and rebated elements.

Your competitive advantage: a considerable enhancing of your door elements – at low costs!

**Marking:**  
To improve the recognition score of this high quality equipment series, serial lock foreends are provided with the well-known whisper comfort symbol and the logotype “Whisper comfort noise reduction” in addition to the SAG company logo. This marking is carried out uniformly between the latch and bolt for all locks of the DIN classes 1-5.



# Innovation



## Example: SAG classroom door lock

The security industry is providing an impressively diverse range of security systems for access control in public buildings. These, however, are not usually considered for schools, despite the well-known potential threats that exist there, because they are too elaborate, costly and expensive.

### Effective and affordable at the same time

To ensure the effective prevention of intrusion by unauthorised persons during classroom lessons, Schulte-Schlagbaum AG has developed a highly effective yet affordable solution. The new SAG Classroom door locking system is a constructively optimised mortice lock which allows entry from outside into the classroom only in a "controlled" way while the room can be left from the inside at any time.

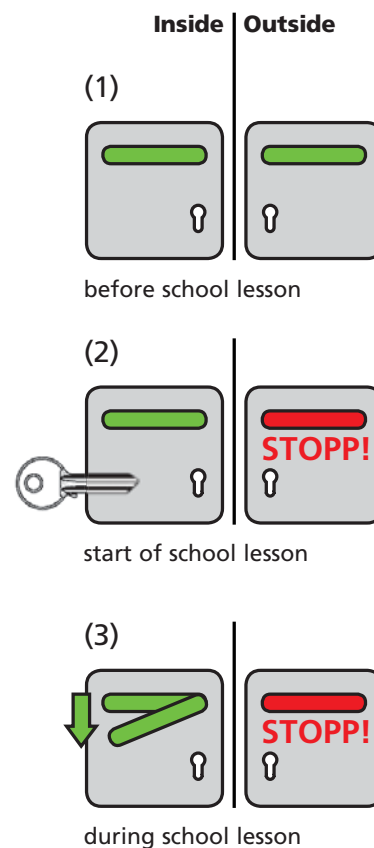
### Simple and safe handling

The SAG Classroom door locking system is the traditional schoolroom door with double-sided latchkey (door handle). To protect against unauthorised access during lessons, the outside latchkey is blocked simply by closing the door from the inside. The emergency function designed especially for permanent operation guarantees that the room can be left at any time by using the inside latchkey (as a permanent means of escape).

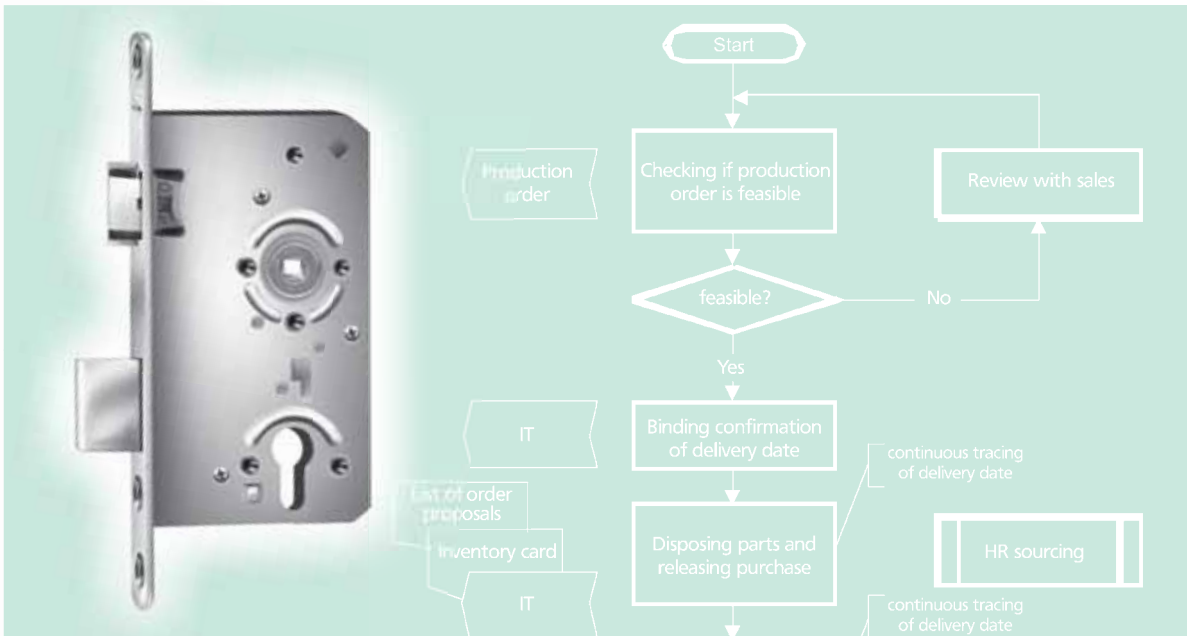
### Low cost, little time and effort - high effectiveness

The SAG Classroom door locking system can simply replace existing mortice locks. That means that this solution can be implemented at short notice and at low investment expense during ongoing schooling as a part of programmes to prevent amok attacks.

## Example



# Quality - Made in Germany



## Quality Management System

The observance of the service promise to customers, suppliers, employees and business partners, as well as compliance with legal and official requirements are of the highest importance for the further development of our company. Quality relates not only to the functionality of our products, but also to the entire range of services of our company, including the services which we provide within the scope of market development, market support and particularly in the area of service.

It is the duty of each employee to demonstrably improve the efficiency by means of continuous improvement of the processes and accompanying controlling measures. To document these requirements as to quality and further develop them so that they are obligatory and binding for all employees, SAG maintains a quality management system in accordance with DIN EN ISO 9001:2008.

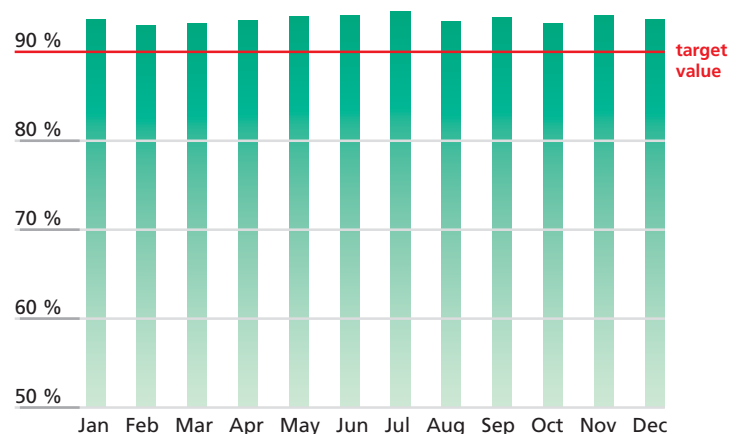
The objective of all the measures is the permanent improvement of the products, processes and services of the company. In addition, we subject our products to a wide range of external certifications, e.g. by MPA, RAL, or PIV.

## Customer satisfaction

Quality is reflected in the satisfaction of our customers and is the most important prerequisite for the economic success of our company. Our recognised high delivery performance is the result of continuous process improvements in the flow of goods, in stockkeeping and in production technology, which contribute to cushioning the impact of cost increases and maintaining a high level of quality.



Delivery reliability 2008





Classes according to DIN 18251-1 SAG Article-No. Example	Example for different inspection features	Requirements in accordance to DIN 18251-1	Requirements in accordance to DIN EN 12209	Minimum requirements by SAG
<b>Class 1</b> interior doors SAG Art. 124600.	Permanent function follower/latchbolt, side load	k. A.	Klasse S - 200.000x for 50N side force	> 200.000x for 50N side force
	Permanent function deadbolt	k. A.	50.000x	> 50.000x
	latchbolt side force	k. A.	2 kN	> 2 kN
<b>Class 2</b> interior doors SAG Art. 17464W.	Permanent function follower/latchbolt, side load	k. A.	Klasse S - 200.000x for 50N side force	> 200.000x for 50N side force
	Permanent function deadbolt	k. A.	50.000x	> 50.000x
	latchbolt side force	3 kN	3 kN	> 3 kN
	deadbolt side force	4 kN	3 kN	> 6 kN
<b>Class 3</b> cylinder locks for ending doors SAG Art. 17465W. / 17467W.	Permanent function follower/latchbolt, side load	200.000x	Klasse S - 200.000x for 50N side force	> 200.000x for 50N side force
	Permanent function deadbolt	50.000x	50.000x	> 50.000x
	latchbolt side force	3 kN	3 kN	> 3 kN
	deadbolt side force	6 kN	3 kN	> 6 kN
	deadbolt opposed force	2 kN	2 kN	> 2 kN
<b>Class 4</b> cylinder locks for burglary resistance SAG Art. 17495W0 / 17480W.	Permanent function follower/latchbolt, side load	200.000x	Klasse S - 200.000x for 50N side force	> 200.000x for 50N side force
	Permanent function deadbolt	50.000x	50.000x	> 50.000x
	latchbolt side force	6 kN	3 kN	> 6 kN
	deadbolt side force	10 kN	7 kN	> 10 kN
	deadbolt opposed force	4 kN	5 kN	> 5 kN
<b>Class 5</b> cylinder locks for high burglary resistance SAG Art. 19300W. / 19403DS / 17468SP	Permanent function follower/latchbolt, side load	200.000x	Klasse S - 200.000x for 50N side force	> 200.000x for 50N side force
	Permanent function deadbolt	50.000x	50.000x	> 50.000x
	latchbolt side force	6 kN	3 kN	> 6 kN
	deadbolt side force	10 kN	7 kN	> 10 kN
	deadbolt opposed force	6 kN	5 kN	> 6 kN



### SAG sets quality standards

SAG Door Locks are constructed in accordance to DIN 18251-1 and DIN EN 12209 – in many cases the requirements are significantly exceeded as demonstrated in the examples above.

For detailed information please don't hesitate to get in touch with us.



**1.**  
**Lockcases and striking plates for residential doors**

**2.**  
**Lockcases for heavy duty doors**

**3.**  
**Lockcases for narrow stile doors**

**4.**  
**Lockcases for emergency doors**

**5.**  
**Annex**

	Art.-No.	page
Suchen und Finden		0.14
Artikelnummernverzeichnis		0.15
<b>1. Lockcases and striking plates for residential doors</b>		
Interior- and exit doors	1206000 / 1417200 / 1411300	1.2
	1246000 / 1256000	1.4
	17464W0	1.6
	17465W0	1.8
Interior- and exit doors (foreign standard)	17588W0	1.10
	17585W0	1.12
	1101010	1.14
	1714300	1.16
Swinging doors	1717800	1.20
Striking plates	1 SK2480	1.22
	1 WB2460	1.24
<b>2. Lockcases and striking plates for heavy duty doors</b>		
Residential architectural/construction	17495W0	2.2
	19300W0	2.4
	17480W0	2.6
	17467W0	2.8
Residential architectural/construction (foreign standard)	17688W0	2.10
Doors with increased safety requirements	17470WK + FK	2.12
	17473W0 + FK	2.14
	17586W0 + FK	2.16
Fire protection doors (foreign standard)	18354W0	2.18
Fire protection doors	18358W0	2.20
Wet room doors	17468NT	2.22
<b>3. Lockcases and striking plates for narrow stile doors</b>		
Entrance doors	18407W0	3.2
Interior doors	18405W0	3.8
	1341200	3.10
	1841000	3.4
	18419W0	3.6
<b>4. Lockcases for emergency doors</b>		
Emergency exit doors / classroom doors	174765K	4.2
	194765P	4.4
	18355EV / 18357EV	4.6
Anti-panic doors	17571EV	4.10
	18352DV / 18354DV	4.8
Emergency exit and anti-panic for narrow stile doors	18405EP	4.12
<b>Annex</b>		
Product liability		6.2
Manual for lockcases		6.3
Measurements / Example of DIN EN 12209 * classifications		6.6
Classification in accordance to DIN EN 12209		6.8
Signs and symbols		6.14
* Product-related classification according to DIN EN 12209 is mentioned on the catalogue pages each		

Product features

Range of application

Door type respectively DIN-classes

Certification according to DIN EN 12209

**Lockcases for heavy duty doors**

**# 1 7470WK**

**Specification text**

**# 1 7470WK**  
SAG mortise lockcase with anti-thrust latchbolt and Whisper-Comfort noise reduction in accordance to DIN 18251-1, class 4, for heavy-duty doors; for Euro profile cylinder with key action on latchbolt, 72 mm centre distance, 55 mm (60 / 65 / 80) backset, 9 mm (9 / 10 mm) selftightening follower fixed in metal rings (bronze bearing), 20 mm (18 mm\*) rounded (edged) forend, nickel-silver lacquered (stainless steel satin / polished brass) for rebated door, closed lockcase body galvanneal with self-securing screws, 2-throw, metal latch-, anti-thrust latch and deadbolt nickel plated, maintenance free by life-time greasing

**Classification in accordance to DIN EN 12209**  
3 5 S 0 0 C 4 B C 2 0

**# 1 7570WK**  
SAG mortise lockcase with anti-thrust latchbolt and Whisper-Comfort noise reduction, as above, but with 24 mm rounded (edged) forend for flat doors

**# 1 7470FK**  
SAG mortise lockcase with anti-thrust latchbolt and Whisper-Comfort noise reduction, for Euro profile cylinder with key action on latchbolt, without deadbolt, else as # 17470WK

**Classification in accordance to DIN EN 12209**  
3 5 S 0 0 C - B C 2 0

**# 1 7570FK**  
SAG mortise lockcase with anti-thrust latchbolt and Whisper-Comfort noise reduction, as above, but with 24 mm rounded (edged) forend for flat doors

**Further differs**

**SAG differ plug\***  
For SAG profile cylinder lockcases

**Please order separately:**  
# 1 BE 7460

Note:  
The variations, marked as \* are not subject of DIN 18251-1, class 4

Note:  
The variations, marked as \* are not subject of DIN 18251-1.

#	C	Backset				24	Executions of forend				Follower				
		55	60	65	80		100	18	20	24	stainless steel	brass	5	9	12*
1 7470WK	●	●	●	●	●	●	●	●	●	●	●	●	●	●	●
1 7570WK	●	○	○	○	○	●	●	●	●	●	●	●	●	●	●
1 7470FK	●	○	○	○	○	○	●	●	●	●	●	●	●	●	●
1 7570FK	●	○	○	○	○	○	●	●	●	●	●	●	●	●	●

2.12 ● standard ○ on request, depending on requested quantity

2.13

Overview of variants



## Index of item numbers

#	page	#	page	#	page
# 1 101010	1.14	# 1 4146R0	1.5	# 1 8352DV	4.8
# 1 101040	1.15	# 1 4148NT*	2.23	# 1 8352W0	2.19
# 1 10106W	1.15	# 1 415900*	2.3	# 1 8354DV	4.8
# 1 10107W	1.15	# 1 416900*	2.3	# 1 8354W0	2.18
# 1 206000	1.2	# 1 417200*	1.3	# 1 8355EV	4.6
# 1 246000	1.4	# 1 418800	1.11	# 1 8356W0	2.21
# 1 24600K	1.5	# 1 428800	2.11	# 1 8357EV	4.6
# 1 2460FK	1.5	# 1 714300	1.16	# 1 8358W0	2.20
# 1 246400	1.7	# 1 717800	1.20	# 1 8405EP	4.12
# 1 24640K	1.7	# 1 7464W0	1.6	# 1 8405W0	3.8
# 1 246500*	1.9	# 1 7464WK	1.7	# 1 8407W0	3.2
# 1 24650K	1.9	# 1 7465W0	1.8	# 1 841000	3.4
# 1 246700*	2.9	# 1 7465WK	1.9	# 1 841200	3.10
# 1 24670K*	2.9	# 1 7467W0	2.8	# 1 8419W0	3.6
# 1 256000	1.5	# 1 7467WK	2.9	# 1 8505EP	4.12
# 1 25600K	1.5	# 1 7468NT	2.22	# 1 8505W0*	3.9
# 1 2560FK	1.5	# 1 7470FK	2.13	# 1 8507W0*	3.3
# 1 256400	1.7	# 1 7470WK	2.12	# 1 851000	3.5
# 1 25640K	1.7	# 1 7471EV	4.10	# 1 8519W0	3.7
# 1 256500*	1.9	# 1 7473FW	2.15	# 1 9300W0	2.4
# 1 25650K	1.9	# 1 7476SK	4.2	# 1 9300WK	2.5
# 1 256700*	2.9	# 1 7480W0	2.6	# 1 9476SP	4.4
# 1 25670K*	2.9	# 1 7480WK	2.7	# 1 9500W0	2.5
# 1 258800	1.11	# 1 7495W0	2.2	# 1 9500WK	2.5
# 1 341200	3.10	# 1 7564W0	1.7	# 1 SK2480	1.22
# 1 411700*	2.9	# 1 7564WK	1.7	# 1 SK2490	1.22
# 1 41170K*	2.9	# 1 7565W0	1.9	# 1 WB2460	1.24
# 1 411800*	2.7	# 1 7565WK	1.9	# 1 WB2491	1.24
# 1 41180K*	2.7	# 1 7567W0	2.9	# 1 WB2492	1.24
# 1 412700*	2.9	# 1 7567WK	2.9	# 174760K	4.3
# 1 41270K*	2.9	# 1 7568NT	2.23	# 175760K	4.3
# 1 412800*	2.7	# 1 7570FK	2.13	# 175765K	4.3
# 1 41280K*	2.7	# 1 7570WK	2.13	# 1947600	4.5
# 1 413000	1.3	# 1 7571EV	4.10	# 1957600	4.5
# 1 413200	1.7	# 1 7573FW	2.15	# 195765P	4.5
# 1 41320K	1.7	# 1 7573W0	2.14		
# 1 413300*	1.9	# 1 7580W0	2.7		
# 1 41330K*	1.9	# 1 7580WK	2.7		
# 1 413600	1.5	# 1 7585W0	1.12		
# 1 41360K	1.5	# 1 7585WK	1.13		
# 1 4136R0	1.5	# 1 7586FW	2.17		
# 1 4138NT*	2.23	# 1 7586W0	2.16		
# 1 414100	1.17	# 1 7588FW	1.11		
# 1 414200	1.7	# 1 7588R0	1.11		
# 1 41420K	1.7	# 1 7588W0	1.10		
# 1 414300*	1.9	# 1 7595W0	2.3		
# 1 41430K*	1.9	# 1 7688FW	2.10		
# 1 414600	1.5	# 1 7688R0	2.11		
# 1 41460K	1.5	# 1 7688W0	2.11		

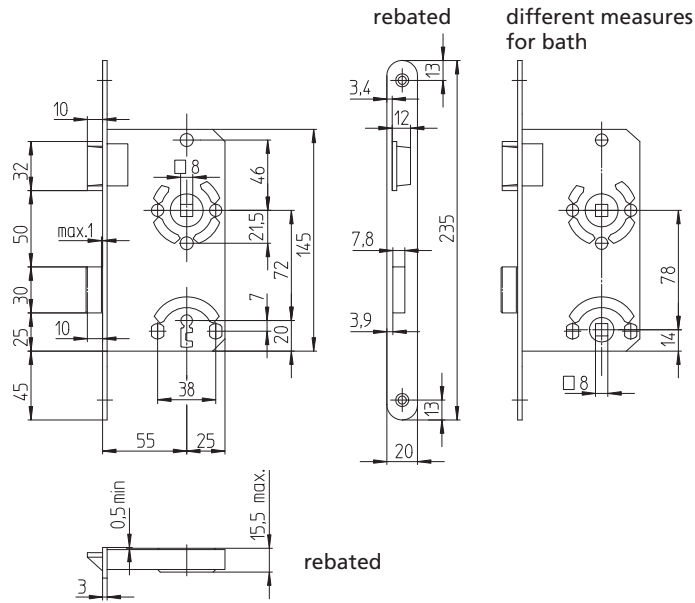
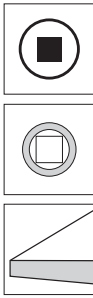


**1.**  
**Lockcases for  
interior doors**





# 1 206000



**?** **SAG mortice lockcase for interior doors, class 1, differ lock**, 72 mm centre distance, 55 mm backset, 8 mm **follower in ball bearing**, 20 mm rounded forend **nickel-silver lacquered** for rebated doors, closed lockcase with protection that the key does not fall off, single throw, plastic latch- and deadbolt, with one key, only in industrial packaging

Striking plate



Standard version, see page 1.22

Further differs:

**□** **SAG mortice lockcase, bathroom**, 78 mm centre distance or 72 mm centre distance\*, also available with 4 mm deadbolt follower\*

Note: The variations, marked as \* are not subject to DIN18251-1

#	Backset				Executions of forends						Follower						
	55	65	80	100	rebated door		flat door	* ○	Stainless		steel		brass		8 ●	9 ○	10 ○
					18	20	24		satin	zinc	lacq.	satin	pol.				
<b>?</b> 1 206000	●					●		●			●			●			
<b>□</b> 1 413000	●					●		●			●			●			
<b>□</b> 1 417200	●					●		●			●			●			

### # 1 206000

**SAG mortice lockcase in accordance to DIN 18251-1, class 1, for interior doors, differ lock, 8 mm follower in ball bearing, 20 mm rounded forend nickel-silver lacquered** for rebated doors, closed lockcase with protection that the key does not fall off, single throw, latch- and deadbolt plastic with one key, only in industrial packaging

#### Classification according to DIN EN 12209

1 R 4 0 0 0 A - B 0 2 0

### # 1 413000

**SAG mortice lockcase in accordance to DIN 18251-1, class 1, bathroom lock, 78 mm centre distance, with 8 mm deadbolt follower, otherwise as # 1 206000**

#### Classification according to DIN EN 12209

1 R 4 0 0 0 A - B G 2 0

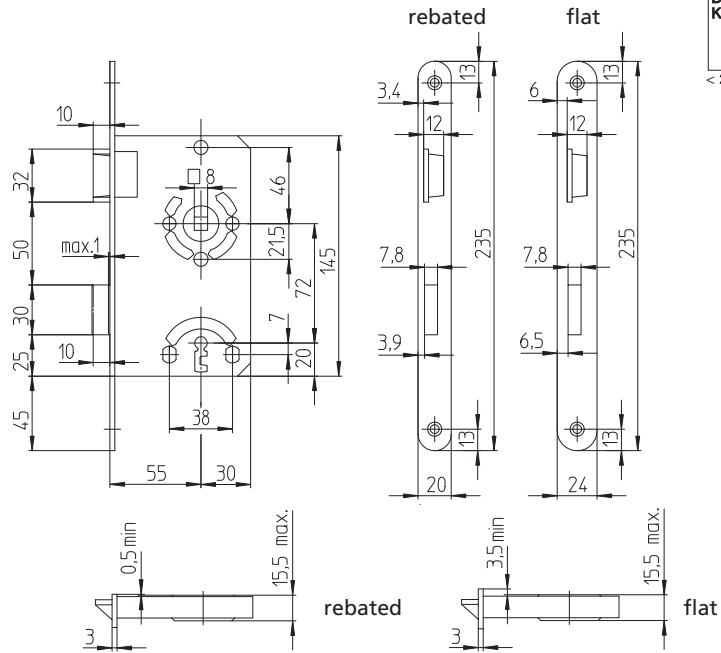
### # 1 417200\*

**SAG mortice lockcase for the Export market as bathroom lock for interior doors, rebated, 55 mm backset, dimensions according to DIN 18251-1, but with 72 mm centre distance, with 4 mm (8 mm) deadbolt follower, 8 mm follower in ball bearing, 20 mm rounded forend nickel-silver lacquered, closed lockcase, single throw, latch- and deadbolt plastic grey, only in industrial packaging**

#### Classification according to DIN EN 12209

1 R 4 0 0 0 A - B G 2 0

**# 1 246000**



**SAG Lockcase, differ lock, for lightweight inner doors**  
follower fixed in bearings

Extra features



with „Whisper-Comfort“ noise reduction

**# 1 2460FK**

**SAG latchlock with „Whisper-Comfort“ noise reduction**

Striking plate



Standard version, see page 1.22

Further differs

**SAG Lockcase for bathroom doors,**  
78 mm follower

**# 1 4136R0**

**SAG deadlock, for bathroom doors**

Note: The variations, marked as \* are not subject to DIN18251-1

#		Backset						Executions of forends						Follower						
		55	60	65	70	80	100	rebated door		flat door		*	stainless		steel		brass			
								18	20	24			satin	zinc	lacq.	satin	pol.	8		9
1 2460FK	●	●						●				○		○	○	○	○	●		
1 2560FK	●	●							●			○		○	○	○	○	●		
1 246000	○	●						○	●			○		●	○	○	○	●		
1 256000	○	●							●		○	○		●	○	○	○	●		
1 413600	○	●						○	●			○		●	○	○	○	●		
1 414600	○	●							●		○	○		●	○	○	○	●		
1 4136R0	●	●							●			○		●	○	○	○			
1 4146R0	●	●							●			○		●	○	○	○			

**# 1 246000**

SAG sashlock, for lightweight inner doors, requirements to DIN EN 12209 (clas. 1L400A-HA20), dimensions according to DIN18251-1, class 1, for differ plug, 72 mm centre distance, 55 mm backset, 8 mm follower in bearing, 20 mm (18\*) round forend, Nickel-Silver lacquered (gold lacquered, stainless steel matt, brass matt, brass polished) for rebated doors, closed lockcase body, with protection that the key does not fall off, single throw, metal latchbolt and metal deadbolt, rustprotected, (plastic latch- and deadbolt grey if lacquered forend), with one nickel-plated key 1S24660,

**Classification according to DIN EN 12209**

1 S 4 0 0 A - B 0 2 0

**# 1 256000**

Requirements to DIN EN 12209 (clas. 1L400A-HA20), dimensions according to DIN 18251-1, class 1, as above but with 24 mm round (squared\*) forend for flat door doors

**# 1 413600**

SAG bathroom lockcase, requirements to DIN EN 12209 (clas. 1L400A-H020), dimensions acc. to DIN 18251-1, class 1, with 78 mm centre distance, with 8 mm „dead-follower“, metal latchbolt and metal deadbolt, (plastic latch- and deadbolt grey if lacquered forend), otherwise same as # 1246000

**Classification according to DIN EN 12209**

1 S 4 0 0 A - B G 2 0

**# 1 414600**

SAG bathroom lockcase, requirements to DIN EN 12209 (clas. 1L400A-H020), dimensions acc. to DIN 18251-1, class 1, as above but with 24 mm round (squared\*) forend for flat door doors

**# 1 4136R0**

SAG mortice deadlock, for bathroom doors  
Dimensions according to DIN 18251-1, class 1

**Classification according to DIN EN 12209**

1 S 4 0 0 A - B G 0 0

Note:

The variations, marked as \* are not subject to DIN18251-1, class 1

**# 1 24600K**

as before, but with “Whisper-Comfort” noise reduction, page 1.2  
metal latchbolt and hybrid-deadbolt  
nickel-plated

**# 1 25600K**

as before, but with “Whisper-Comfort” noise reduction, page 1.2  
metal latchbolt and hybrid-deadbolt  
nickel-plated

**# 1 41360K**

as before, but with “Whisper-Comfort” noise reduction, page 1.2  
metal latchbolt and hybrid-deadbolt  
nickel-plated

**# 1 41460K**

as before, but with “Whisper-Comfort” noise reduction, page 1.2  
metal latchbolt and hybrid-deadbolt  
nickel-plated

**# 1 4146R0**

as before, but with 24 mm rounded forend for flat doors

**# 1 2560FK**

as before, but with 24 mm rounded forend for flat doors

**# 1 2460FK**

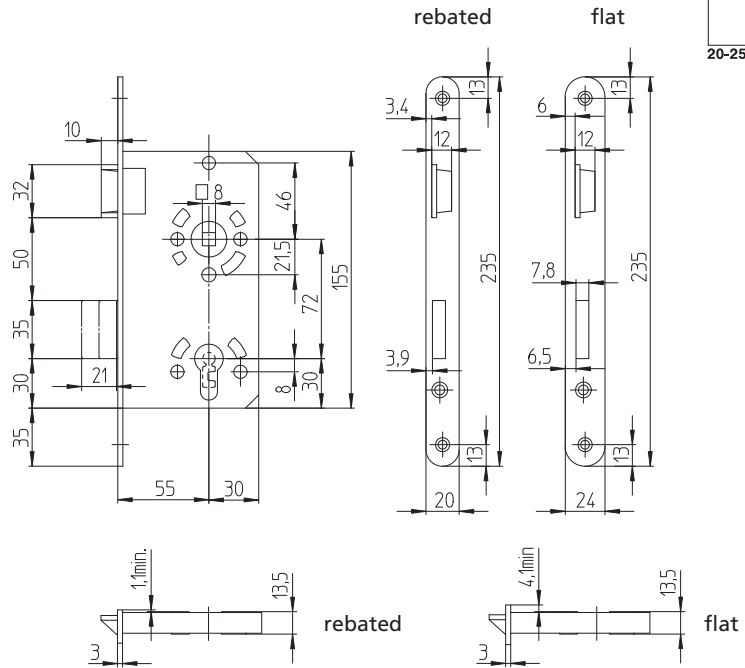
SAG mortice latchlock with “Whisper-Comfort” noise reduction, dimensions according to DIN 18251-1, class 1  
55 mm backset, 8 mm follower, 20 mm rounded forend,  
for rebated doors, metal latchbolt  
nickel-plated

**Classification according to DIN EN 12209**

1 S 4 0 0 A - B G 2 0

# 1 7464W0

DIN Kl. 2  
20-25 kg/m²



**SAG mortice lockcase, for Euro-Profile cylinder, with key action on latchbolt, for inner doors**  
follower with steel inserts fixed in metal rings

Extra features



**"Whisper-Comfort" noise reduction**

Further differs

Striking plate



Standard version, see page 1.22

**SAG differ lockcase**

**SAG bathroom lockcase,**  
78 mm centre distance

Note: The variations, marked as \* are not subject to DIN 18251-1

#		Backset						Executions of forends							Follower							
		55	60	65	70	80	100	rebated door		flat door		*	stainless		steel		brass			8	9	10
								18	20				24	satin	zinc	lacq.	satin	pol.				
	1 7464W0	●						●	●		●	○	●		●	●	○	●				
	1 7564W0	○	●							●	○	○		●	○	○	○	●				
	1 246400	○	●					●	●		●	○	●		●	●	○	●				
	1 256400	○	●							●	○	○		○	○	○	○	●				
	1 413200	○	●					○	●		●	○	●		●	●	○	●				
	1 414200	○	●							●	○	○		○	○	○	○	●				

### # 1 7464W0

SAG mortice lockcase, dimensions in accordance to DIN 18251-1, class 2, for inner doors, for Euro-Profile cylinder, with key action on latchbolt, 72 mm centre distance, 55 mm backset, 8 mm follower with steel inserts, fixed in metal rings, 20 mm (18 mm\*) rounded (squared\*) forend, nickel-silver lacquered (stainless steel satin / brass satin / brass polished), for rebated doors, closed lockcase galvanised, with self-securing screws, double throw, metal latch- and deadbolt rust protected

**Classification in accordance to DIN EN 12209**

3 S 5 0 0 C 2 B C 2 0

### # 1 7564W0

SAG mortice lockcase, dimensions in accordance to DIN 18251-1, class 2, as before, but with 24 mm rounded (squared\*) forend for flat doors

### # 1 246400

SAG differ lock, without key action on latchbolt, with protection that the key does not fall off, with key 1 S24660, otherwise as # 1 7464W0

**Classification in accordance to DIN EN 12209**

3 S 5 0 0 C 1 B 0 2 0

### # 1 256400

SAG mortice lockcase, dimensions in accordance to DIN 18251-1, class 2, as before, but with 24 mm forend for flat doors

### # 1 413200

SAG mortice lockcase, dimensions in accordance to DIN 18251-1, class 2, bathroom lockcase, 78 mm centre distance, single throw, with 8 mm deadbolt follower, otherwise as # 1 7464W0

**Classification in accordance to DIN EN 12209**

3 S 5 0 0 C 1 B G 2 0

### # 1 414200

SAG mortice lockcase, dimensions in accordance to DIN 18251-1, class 2, bathroom lockcase, 78 mm centre distance, single throw, with 8 mm deadbolt follower, otherwise as # 1 7464W0

Note: The variations, marked as \* are not subject to DIN 18251-1

### # 1 7464WK

→ as before, but with "Whisper-Comfort" noise reduction, page ...

### # 1 7564WK

→ as before, but with "Whisper-Comfort" noise reduction, page ...

### # 1 24640K

→ as before, but with "Whisper-Comfort" noise reduction, page ...

### # 1 25640K

→ as before, but with "Whisper-Comfort" noise reduction, page ...

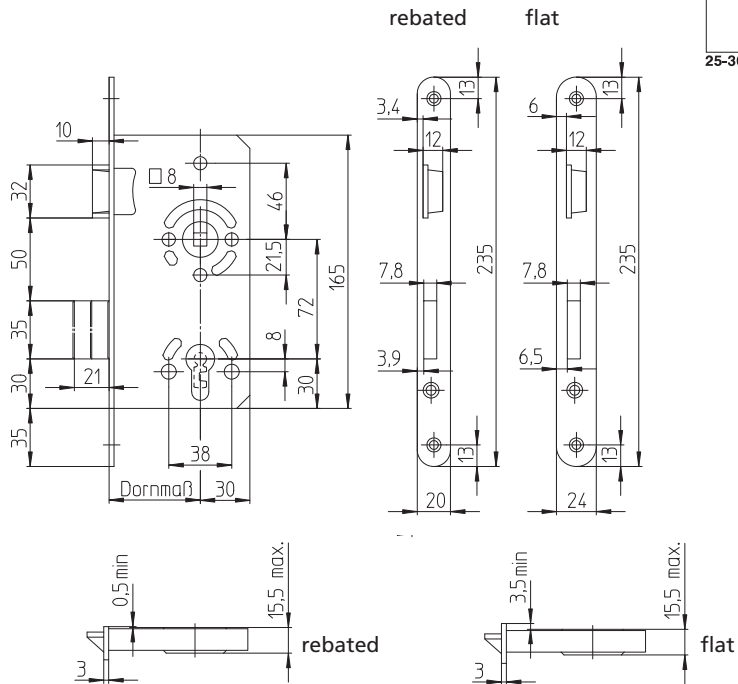
### # 1 41320K

→ as before, but with "Whisper-Comfort" noise reduction, page ...

### # 1 41420K

→ as before, but with "Whisper-Comfort" noise reduction, page ...

# 1 7465W0



DIN Kl. 3  
25-30 kg/m<sup>2</sup>

**SAG mortice lockcase, for Euro-Profile cylinder, with key action on latchbolt, for inner and exit doors,**  
follower with steel inserts fixed in metal rings

Extra features



**Whisper-Comfort™ noise reduction**

Further differs



**SAG differ lockcase\***



**Snib holding function\***



**SAG bathroom lockcase,\***  
78 mm centre distance

Striking plate



Standard version, see page 1.22



Note: The variations, marked as \* are not subject to DIN 18251-1, class 3

#		Backset						Executions of forends						Follower				
		55	60	65	70	80	100	rebated door		24		*	stainless		steel		brass	
								18	20				satin	zinc.	lacq.	satin	pol.	8
1 7465W0	○	●	○	○				●			●	●	○	●	○	●	○	
1 7565W0	○	○	○	○					●		○	○	○	●	○	○	○	○
1 246500	○	○	○	○				●			○	○	○	●	○	○	○	○
1 256500	○	○	○	○					●		○	○	○	●	○	○	○	○
1 413300	○	○	○	○				●			○	○	○	●	○	○	○	○
1 414300	○	○	○	○					●		○	○	○	●	○	○	○	○

**# 1 7465W0**

SAG mortice lockcase, dimensions in accordance to DIN 18251-1, class 3, for inner and exit doors, for Euro-Profile cylinder, with key action on latchbolt, 72 mm centre distance, 55 mm (60/65 mm) backset, 8 mm follower with steel inserts, fixed in metal rings, 20 mm rounded forend, nickel-silver lacquered (stainless steel satin / stainless steel polished, brass satin / brass polished), for rebated doors, closed lockcase zinc plated, with self-securing screws, double throw, metal latch- and deadbolt rust protected

**Classification in accordance to DIN EN 12209**

3 S 5 0 0 C 2 B C 2 0

**# 1 7565W0**

SAG mortice lockcase, dimensions in accordance to DIN 18251-1, class 3, as before, but with 24 mm rounded forend for flat doors

**# 1 246500\***

SAG differ lock, without key action on latchbolt, with 1 key 1 S24660, else as # 1 7465W0,

**Classification in accordance to DIN EN 12209**

3 S 5 0 0 C 1 B 0 2 0

**# 1 256500\***

SAG differ lock according to DIN 18251-1, for interior doors, as above but with 24 mm rounded forend for flat doors

**# 1 413300\***

SAG bathroom lockcase, 78 mm centre distance, single throw, with 8 mm deadbolt follower, else as # 1 7465W0

**Classification in accordance to DIN EN 12209**

3 S 5 0 0 C 1 B G 2 0

**# 1 414300\***

SAG bathroom lock according to DIN 18251-1, for interior doors, as above but with 24 mm rounded forend for flat doors

**# 1 7465WK**

→ as before, but with "Whisper-Comfort" noise reduction, page ...

**# 1 7565WK**

→ as before, but with "Whisper-Comfort" noise reduction, page ...

**# 1 24650K**

→ as before, but with "Whisper-Comfort" noise reduction, page ...

**# 1 25650K**

→ as before, but with "Whisper-Comfort" noise reduction, page ...

**# 1 41330K\***

→ as before, but with "Whisper-Comfort" noise reduction, page ...

**# 1 41430K\***

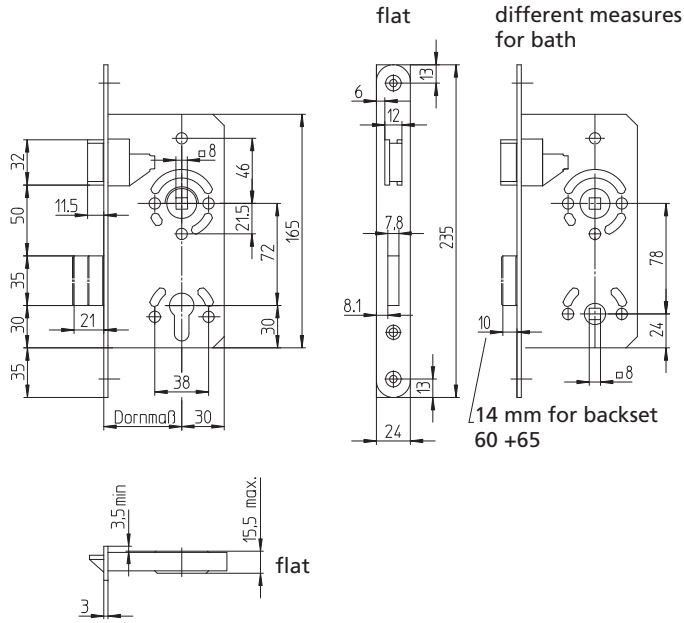
→ as before, but with "Whisper-Comfort" noise reduction, page ...

Note:

The variations, marked as \* are not subject to DIN 18251-1



**# 1 7588W0**



DIN Kl. 3  
25-30 kg/m²

**SAG Mortice lockcase, sashlock, for Euro-profile cylinder, with key action on latchbolt, for inner doors, with reversible latchbolt, follower in metal rings**

Striking plate



Standard version, see page 1.22

**# 1 7588FW**

**SAG Mortice lockcase, latchlock, for Euro-profile cylinder, with key action on latchbolt, with reversible latchbolt, follower in metal rings**

**# 1 7588R0**

**SAG Mortice lockcase, deadlock, for Euro-profile cylinder**

Further differs

**SAG Mortice lockcase, differ lock**

**SAG Bathroom lockcase**  
78 mm centre distance

#		Backset						Executions of forends						Follower						
		55	60	65	70	80	100	flat door					stainless		steel		brass			
								18	20	24			satin	zinc	lacq.	satin	pol.	8	9	10
1 7588W0		●	○	○				○	○	●	○	●	●		●	○	○	●		
1 7588FW		●	○	○				○	○	●	○	●	●		●	○	○	●		
1 7588R0		●	○	○				○	○	●	○	●	●		●	○	○	○		
1 418800		●	○	○				○	○	●	○	●	●		●	○	○	○	●	
1 258800		●	○	○				○	○	●	○	●	○		○	○	○	○	●	

### # 1 7588W0

SAG mortice lockcase with reversible latchbolt  
(for DIN left and DIN right handed doors)

Dimensions in accordance to DIN 18251-1, class 3, for inner doors,  
for Euro profile cylinder with key action on latchbolt, 72 mm centre  
distance, 55 mm (60 / 65) backset, 8 mm follower with steel inserts  
fixed in metal rings, 24 mm (18 / 20 mm) edged (rounded) forend,  
nickel-silver lacquered forend (satin stainless steel / polished brass)  
for flat doors, closed lockcase galvanised with self-securing screws,  
2-throw, metal latch- and deadbolt rustprotected

**Classification in accordance to DIN EN 12209**

3 S 5 0 0 C 2 B C 2 0

### # 1 7588FW

SAG mortice latchlock with reversible latchbolt  
(for DIN left and DIN right handed doors),  
for Euro profile cylinder with key action on latchbolt,  
without deadbolt, as # 1 7588W0

**Classification in accordance to DIN EN 12209**

3 S 5 0 0 C - B C 2 0

### # 1 7588R0

SAG mortice deadlock  
(for DIN left and DIN right handed doors),  
for Euro profile cylinder without key action on latchbolt,  
without latchbolt, as # 1 7588W0

**Classification in accordance to DIN EN 12209**

3 S 5 0 0 C 2 B C 0 0

### # 1 258800

SAG mortice latchlock with reversible latchbolt  
(for DIN left and DIN right handed doors),  
for differ lock, without key action on latchbolt,  
with 1 key 1 S24660, 1-throw, as # 1 7588W0

**Classification in accordance to DIN EN 12209**

3 S 5 0 0 C 1 B 0 2 0

### # 1 418800

SAG mortice latchlock with reversible latchbolt  
(for DIN left and DIN right handed doors),  
as bathroom lock, 78 mm centre distance, 1-throw,  
with 8 mm deadbolt follower as # 1 7588W0

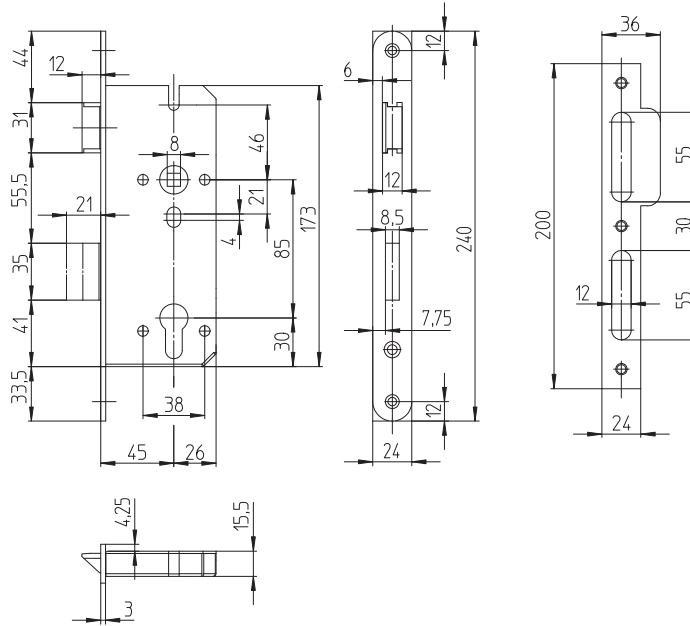
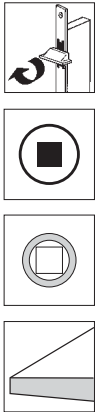
**Classification in accordance to DIN EN 12209**

3 S 5 0 0 C 1 B G 2 0



# 1 7585W0

DIN Kl. 3  
25-30 kg/m²



**SAG Sashlock, requirements to DIN EN 12209 (clas. 2S500C2BC20), for Euro-profile cylinder, with reversible latchbolt, double throw, incl. striking plate**

Extra features

with „Whisper-Comfort“ noise reduction

Further differs

**SAG differ plugs** for SAG profile cylinder lockcases

Please order separately:  
# 1 BE 7460

#	Noise reduction icon	Backset			Executions of forends										Follower														
		45	50	55	flat door			Arch icon	Euro icon	stainless		steel		brass		Square icon				Circle icon									
					18	20	24			satin	pol.	lacq.	satin	pol.	7	8	8,5	9	10	7	8	8,5	9	10					
1 7585W0	○	●						●	○	●	●	●	●	●	●	○	●	○	○	○	○	○	○	○	○	○	○	○	○



**# 1 7585W0**

SAG mortice lockcase with reversible latchbolt for right or left handed doors, requirements to DIN EN12209 (clas. 2S500C2BC20), for Euro-Profile cylinder 85 mm centre distance, 45 mm backset, 8 mm (7 / 8,5 / 9 / 10 mm) follower (selftightening), 24 mm square forend and striking plate, nickel-silver lacquered (gold lacquered / satin stainless steel / polished stainless steel / polished brass) for flat door doors, galvanized lockcase with selfsecuring screws, double throw, metal latch and deadbolt rustprotected 10

**Classification in accordance to DIN EN 12209**

3 S 5 0 0 C 2 B C 2 0

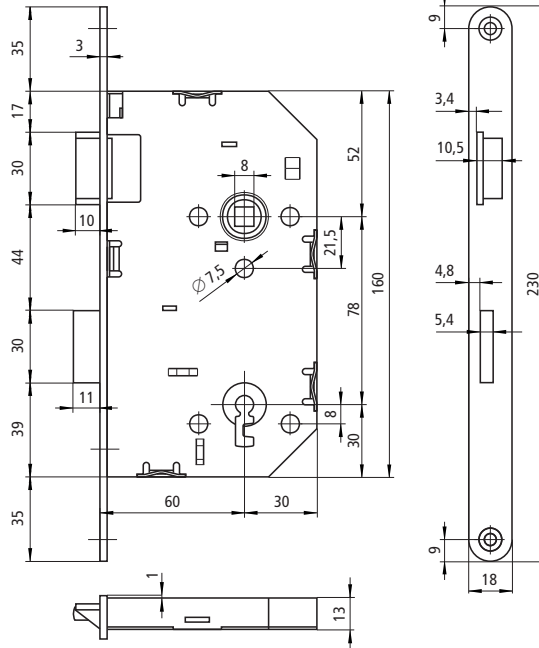
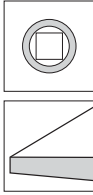
**Hinweis:**

Note: Included striking plates only for the dimensional adjustment and for the illustration of the hole pattern.

**# 1 7585WK**

→ as before, but with „Whisper-Comfort“ noise reduction

# 1 101010



**SAG mortice lockcase in accordance to Swiss norm, type INTRO for interior doors, differ lock, 78 mm centre distance**

Further differs

**SAG mortice lockcase in accordance to Swiss norm, type INTRO for interior doors, bathroom, 78 mm centre distance, with 7 mm olive follower**

**SAG mortice lockcase in accordance to Swiss norm, type INTRO for interior doors, RZW for Swiss round cylinder, 78 mm centre distance**

**SAG mortice lockcase in accordance to Swiss norm, type INTRO for interior doors, for Euro-profile cylinder, 78 mm centre distance**

#		Backset							Executions of forends						
		50	60	70	80				18	18	20	blue zinc			
1 101010			●			●			●				●		
1 101040			○			●			●	●			●	●	
1 10106W			○			●			●				●	●	
1 10107W			○			●			●				●	●	

### # 1 101010

**SAG mortice lockcase in accordance to Swiss norm, type INTRO for interior doors, differ lock**, 78 mm centre distance, 60 mm backset, 8 mm metal follower, delrin latch and metal deadbolt zinc-plated, single throw, closed lockcase, with 1 zinc-plated key, in industrial packaging with 50 pcs. per door direction

### # 1 101040

**SAG mortice lockcase in accordance to Swiss norm, type INTRO for interior doors, bathroom**, 78 mm centre distance, with 7 mm olive follower, otherwise as # 1 101010

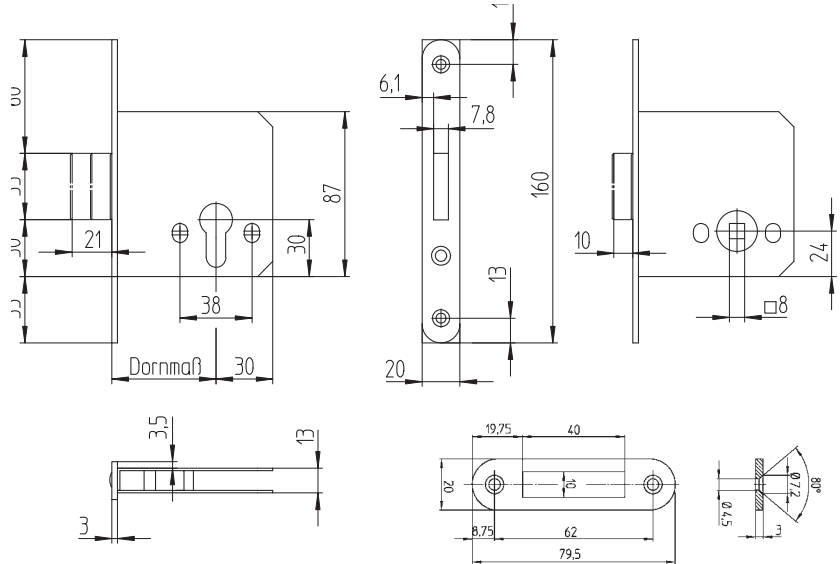
### # 1 10106W

**SAG mortice lockcase in accordance to Swiss norm, type INTRO for interior doors, RZW for Swiss round cylinder**, 78 mm centre distance, otherwise as # 1 101010

### # 1 10107W

**SAG mortice lockcase in accordance to Swiss norm, type INTRO for interior doors, for Euro-profile cylinder**, 78 mm centre distance, otherwise as # 1 101010

# 1 714300



**SAG Lockcase, deadlock, for Euro-profile cylinder, for front and ending doors, double throw**

Further differs

**SAG Lockcase for partition walls / bathroom doors, single throw, 55 mm backset**

**SAG differ plugs**  
for SAG profile cylinder locks

**Please order separately**  
# 1 BE 7460

#		Backset						Executions of forends						Follower						
		55	60	65	70	80	100	rebated door		24			stainless		steel		brass			
								18	20				satin	zinc	lacq.	satin	pol.	8		9
1 714300		●	○	○		●		○	●			○	●							
1 414100		●						○	●			○	○	●						

### # 1 714300

SAG Deadlock for front and ending doors, for Euro-profile cylinder, 55 mm (60 / 65 / 80 mm) backset, 20 mm (18 mm) squared (rounded) forend and squared striking plate # 1SP2143, nickel-silver lacquered (stainless steel satin), with self-securing screws, double throw, metal deadbolt rust-protected

#### Classification according to DIN EN 12209

3	S	5	0	0	C	2	B	C	0	0
---	---	---	---	---	---	---	---	---	---	---

### # 1 414100

SAG Deadlock for partition walls and bathroom doors, 55 mm backset, 20 mm (18 mm) rounded (squared) forend **nickel-silver lacquered** (stainless steel satin), with self securing screws, single throw, metal deadbolt rust-protected

#### Classification according to DIN EN 12209

2	S	5	0	0	C	1	B	G	0	0
---	---	---	---	---	---	---	---	---	---	---

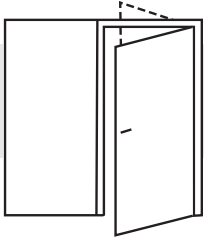
Note:

Included striking plates only for the dimensional adjustment and for the illustration of the hole pattern.



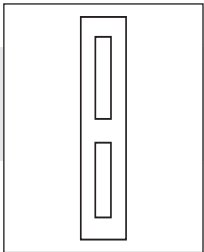


## Lockcases for swinging doors



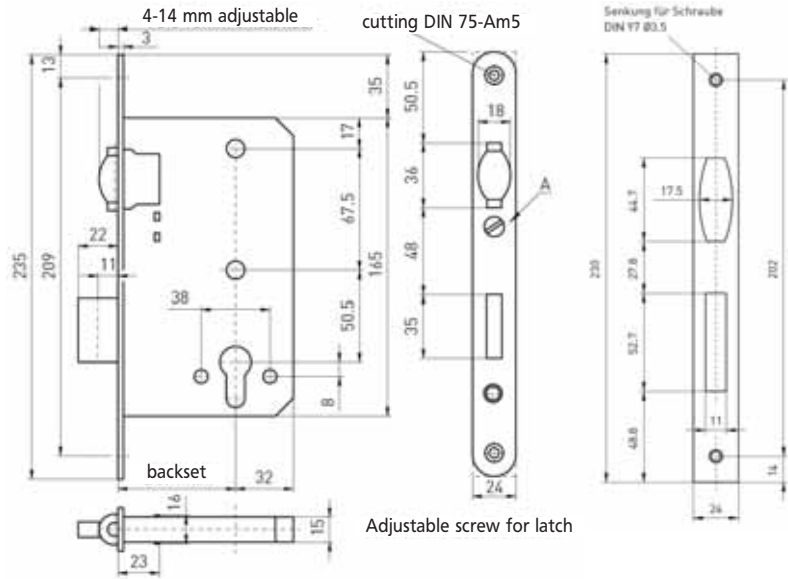
**page 1.20**

## Striking plates



**page 1.22**

# 1 717800



**SAG mortice lockcase, for Euro-Profile cylinder, for swing doors**

Further differs

**SAG differ plugs** for SAG profile cylinder locks

**Please order separately:**  
# 1 BE 7460

#		Backset						Executions of forends						Follower					
		55	60	65	70	80	100	rebated door		flat door		stainless	steel		brass				
								18	20	24	stainless		zinc	lacq.	satin	pol.		8	9
1 717800		●	○	○	○	○			●	○	●	○	●						

### # 1 717800

SAG mortice lockcase for swing doors,  
for Euro-Profile cylinder, 55 mm (60 / 65 / 70 / 80 mm) backset, 24  
mm squared (rounded) forend and squared (rounded) striking plate  
**nickel-silver lacquered** (stainless steel matt) for flat doors, galvanized  
lockcase body, double throw, adjustable metal roller latchbolt and  
galvanized (nickel-plated) metal deadbolt

**Note:**

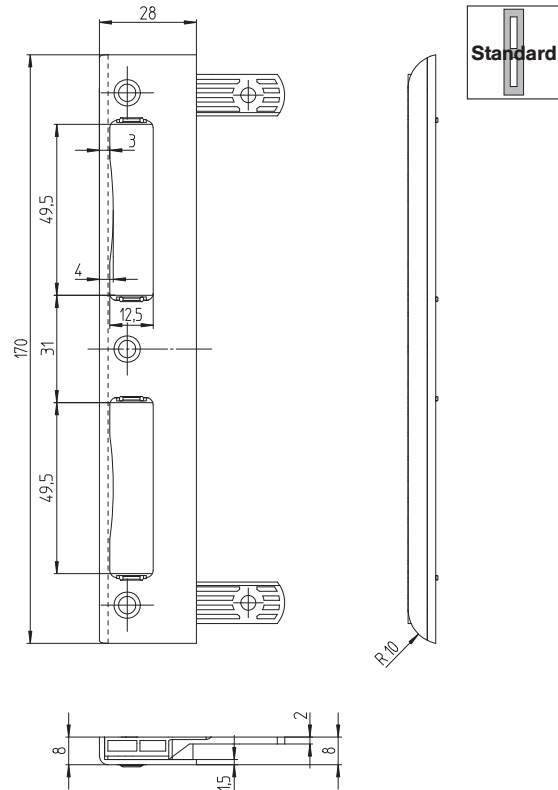
Enclosed striking plates are suitable only for dimensions and imaging  
the hole pattern.



# Striking plates for residential doors



## # 1 SK2480

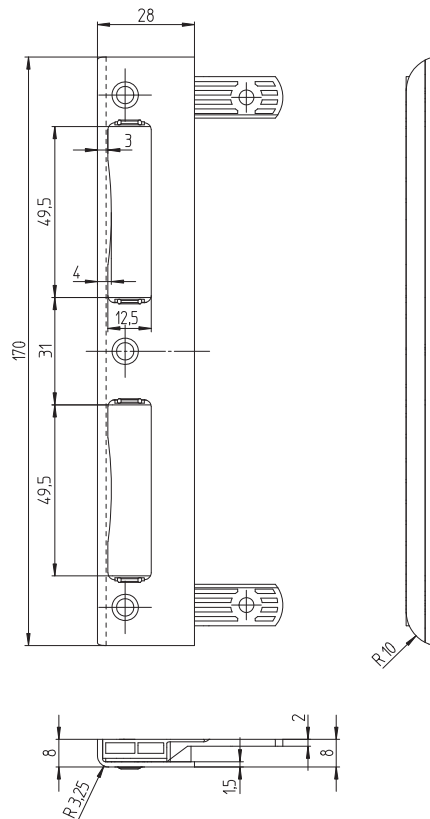


**SAG standard striking plate** for wood frame, **170 mm** length, mounted with plastic plate with integrated fixing angles

## # 1 SK2490



**SAG standard striking plate** for wood frame with 2 integrated fixing angles, upper metal part 28 mm (20 mm) width, **170 mm** length, 8 mm angle dimension, **nickel-silver lacquered** (white lacquered / satin nickel-plated / satin gold-plated / polished gold-plated), screw hole distance from leading edge 8 / 8 / 8 mm (9.5 / 9.5 / 9.5 mm), **mounted with grey-beige plastic plate with 2 integrated fixing angles** 6.5 mm cranked for drill hole in back plate of chuck perforated and prepared for inclusion of double throw insertion # 1 SE2460, suitable for right and left, applicable for mortice lockcases in accordance to DIN 18251-1



#		Backset		Metal surfaces					
		20	28	lacquered			satin	satin	pol.
				nickel-silver	gold	white	nickel-plated	gold-plated	gold-plated
1 SK2480		○	●	●		○	○	○	○
1 SK2490	●	○	○	○		○	○	○	○

Accessories		
Eccentre-refit-set # 1 E16780	plastic plate	fixing angle
	1 SE2460	●
	1 SE2460	●

### # 1 SK2480

SAG standard striking plate for wood frame with 2 integrated fixing angles, upper metal part 28 mm (20 mm) width, 170 mm length, 8 mm angle dimension, nickel-silver lacquered (white lacquered / satin nickel-plated / satin gold-plated / polished gold-plated), screw hole distance from leading edge 8 / 8 / 8 mm (9.5 / 9.5 / 9.5 mm), mounted with grey-beige plastic plate with 2 integrated fixing angles 6.5 mm cranked for drill hole in back plate of chuck perforated and prepared for inclusion of double throw insertion # 1 SE2460, suitable for right and left, applicable for mortice lockcases in accordance to DIN 18251-1

### # 1 SK2490

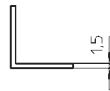
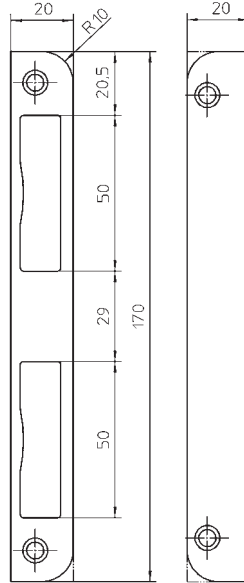
SAG standard striking plate for wood frame with 2 integrated fixing angles, rounded for soft-frames, as above but with constant bending radius 3,3mm, nickel-silver lacquered (white lacquered / satin nickel-plated / satin gold-plated / polished gold-plated), screw hole distance from leading edge 8 / 8 / 8 mm



# Striking plates for residential doors



## # 1 WB2460



**SAG standard angle striking plate**  
for rebated interior doors, **170 mm length,**  
**20 mm side dimensions**

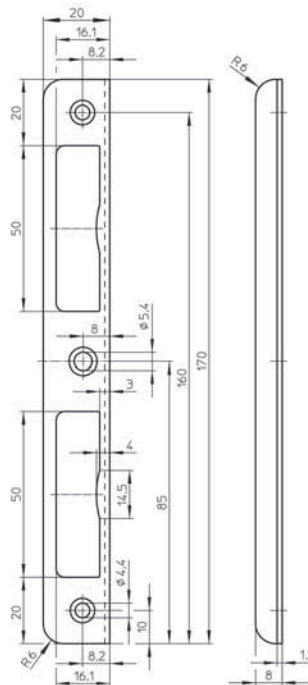
## # 1 WB2491

**SAG standard angle striking plate**  
for rebated interior doors, **170 mm length,**  
**squared, 8 mm axle measurement**  
for glass door locks

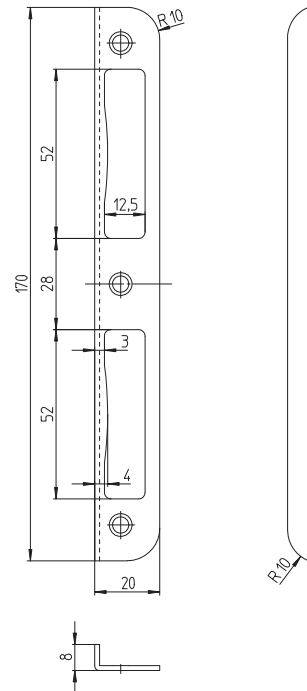
## # 1 WB2492

**SAG standard angle striking plate**  
for rebated interior doors, **170 mm length,**  
**rounded, 8 mm axle measurement**  
for glass door locks

# 1 WB2491



# 1 WB2492



#		Backset 20	Metal surfaces					
			lacquered			stainless satin	brass satin	brass polished
			nickel silver	gold	white			
1 WB2460		●	●	○	○			
1 WB2491		●	●		○			
1 WB2492		●	○		●		●	

Accessories		
Eccenter-refit-set # 1 E16780	plastic plate	fixing angle

### # 1 WB2460

SAG standard angle striking plate for rebated interior doors, 20 mm width, 20 mm side dimensions, 170 mm length, rounded (squared), nickel-silver lacquered (white lacquered / stainless steel satin), with reversible latchbolt

### # 1 WB2491

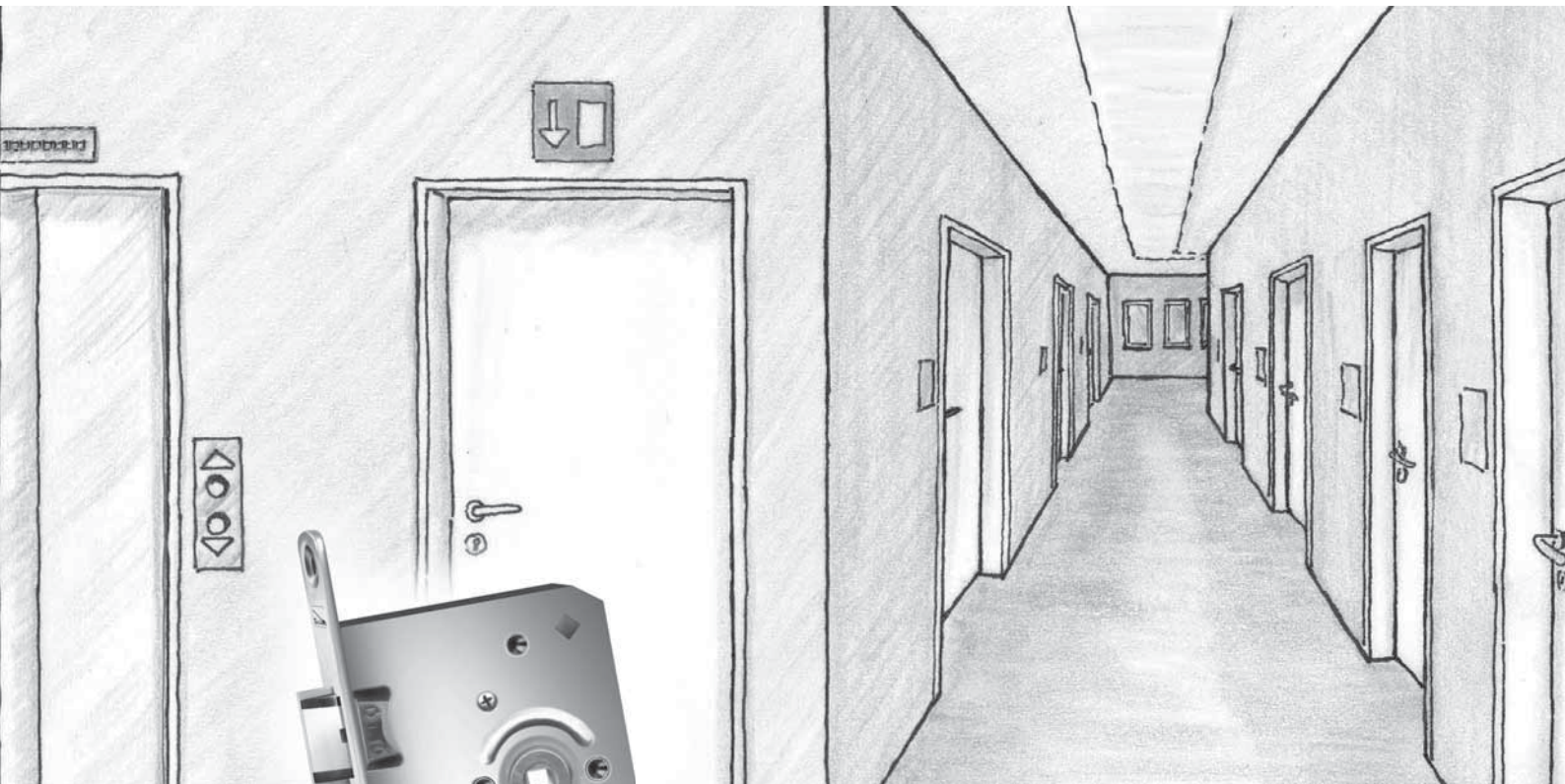
SAG standard angle striking plate for rebated interior doors, as above but squared, 8 mm axle measurement for glass door locks, nickel-silver lacquered (stainless steel satin), suitable for right and left

### # 1 WB2492

SAG standard angle striking plate for rebated interior doors, as above but rounded, 8 mm axle measurement, nickel-silver lacquered (satin nickel-plated / polished brass), suitable for right and left

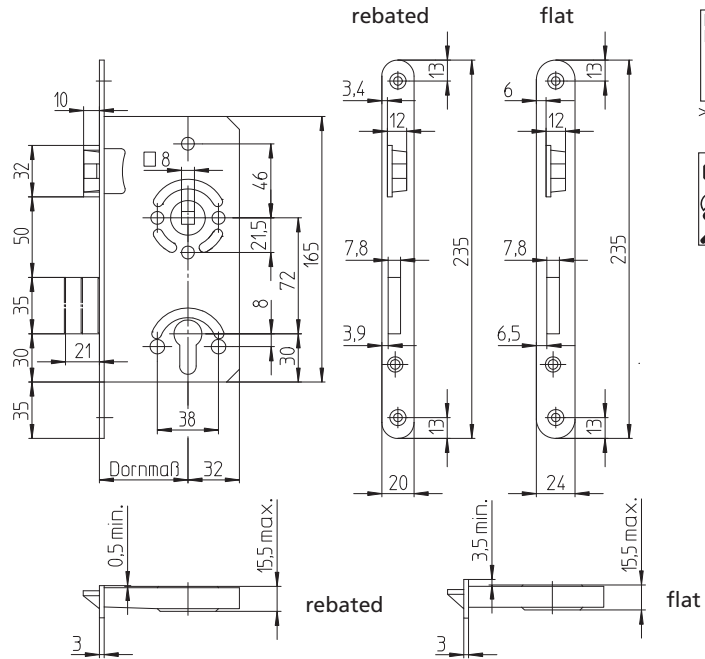
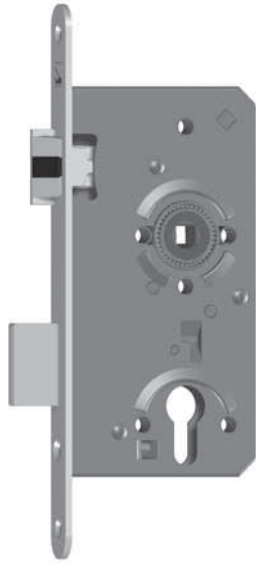
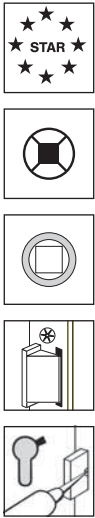






**2.**  
**Lockcases for  
heavy duty doors**

## # 1 7495W0



**SAG Lockcase, sashlock „Super Star“ for security doors**, requirements to DIN EN 12209 (clas. 3S500C4BC20), dimensions in accordance to DIN 18251-1, class 4, selftightening follower in ball bearing

### Extra features



**snib holding function**

### Further differs

**SAG Lockcase for bathroom doors**, 78 mm centre distance



### Striking plates

see page 1.22

**SAG differ plugs** for SAG profile cylinder locks  
**Please order separately:**  
**# 1 BE 7460**

Note: The variations, marked as \* are no subject to DIN18251-1, class. 4

#	*** STAR ***	Backset						Executions of forends						Follower							
		55	60	65	70	80	100	rebated door		flat door	[Symbol]	* [Symbol]	stainless		steel		brass		[Symbol]		
								18	20				24	satin	zinc	lacq.	satin	pol.	8	9*	10*
	<b>1 7495W0</b>	●	○	●	●	○	○			●		○	●			○	○	●	○	○	
	<b>1 7595W0</b>	●	○	○	●	○	○			●		○	●			○	○	●	○	○	
	<b>1 415900</b>	●	○	●	○	○	○			●		○	●			○	○	●	○	○	
	<b>1 416900</b>	●	○	●	○	○	○			●		○	●			○	○	●	○	○	



# 1 7495W0

SAG sashlock „Super-Star“, requirements to DIN EN 12209 (clas. 3S500C4BC20), dimensions according to DIN18251-1, class 4, for Euro-profile cylinder, for security doors, 72 mm centre distance, 55 mm (60/65/70/80) backset, 8 mm (9/10) selftightening follower in ball bearing, round forend 20 mm (\* squared) stainless steel matt (brass matt / brass polished) with lubrication channel for rebated doors, with closed lockcase body, zinc-plated & anthracite lacquered, holes are protected against shavings by sleeves, with selfsecuring screws, double throw, metal latchbolt noise reduced, with plastic plug on latch, noise reduction inside the lockcase and roll bearing, metal latchbolt & deadbolt nickel-plated

**Classification in accordance to DIN EN 12209**

3 S 5 0 0 C 6 B C 2 0

# 1 7595W0

requirements to DIN EN 12009 (clas. 3S500C4BC20), as above, but with 24 mm round forend for flat doors

**Classification in accordance to DIN EN 12209**

3 S 5 0 0 C 6 B C 2 0

# 1 415900\*

SAG bathroom lockcase, requirements to DIN EN 12209 (clas. 3S500C4B020), dimensions according to DIN 18251-1, with 78 mm centre distance, single throw, with 8 mm „dead-follower“, else as 17495W0

**Classification in accordance to DIN EN 12209**

3 S 5 0 0 C 3 B G 2 0

# 1 416900\*

SAG bathroom lockcase, requirements to DIN EN 12209 (clas. 3S500C4B020), dimensions according to DIN 18251-1, as above but with 24 mm round forend for flat doors

**Classification in accordance to DIN EN 12209**

3 S 5 0 0 C 3 B G 2 0

Note:

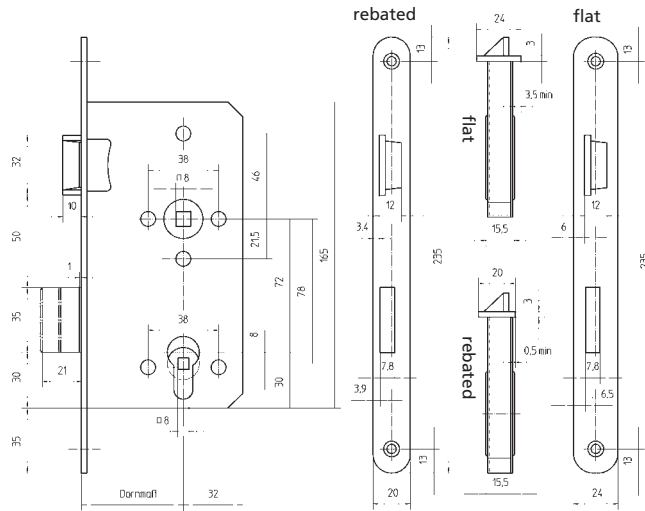
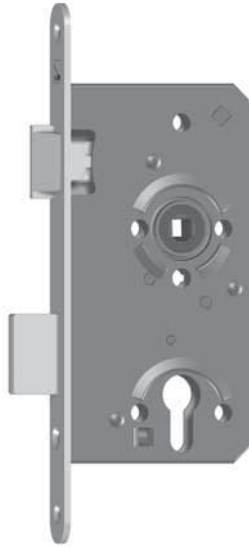
The variations, marked as \* are not subject to DIN18251-1, class 4.



# Lockcases for heavy duty doors



## # 1 9300W0



**SAG Mortice lockcase for heavy duty doors, for Euro-profile cylinder, with key action on latchbolt,**  
selftightening follower in metal rings, stainless steel finish forend, maintenance free by lifetime greasing

Further differs

**SAG differ plug\***  
For SAG profile cylinder lockcases

**Please order separately:**  
**# 1 BE 7460**

Extra feature



**Whisper-Comfort noise reduction**

Optional extras



**Metal cranked latchbolt\***



**Snib holding function\***

**Selftightening follower, fixed in ball bearing**

**with holes are protected against shavings by sleeves**



Striking plates

see page 1.22

Note: The variations, marked as \* are not subject of DIN 18251-1, class 5

#		Backset						Executions of forends						Follower					
		55	60	65	70	80	100	rebated door		flat door		stainless	steel		brass				
								18	20	24				satin	zinc	lacq.		satin	pol.
<b>1 9300W0</b>	<input type="radio"/>	<input type="radio"/>	<input type="radio"/>	<input type="radio"/>	<input type="radio"/>	<input type="radio"/>		<input checked="" type="radio"/>		<input checked="" type="radio"/>	<input checked="" type="radio"/>						<input checked="" type="radio"/>	<input type="radio"/>	<input type="radio"/>
<b>1 9500W0</b>	<input type="radio"/>	<input type="radio"/>	<input type="radio"/>	<input type="radio"/>	<input type="radio"/>	<input type="radio"/>			<input checked="" type="radio"/>	<input checked="" type="radio"/>	<input checked="" type="radio"/>						<input checked="" type="radio"/>	<input type="radio"/>	<input type="radio"/>

### # 1 9300W0

#### SAG mortice lockcase in heavy duty quality

In accordance to DIN 18251-1, class 5, for heavy duty doors, with enhanced security requirements, **for Euro profile cylinder with key action on latchbolt**, 72 mm centre distance, 55 mm (60 / 65 / 80 mm) backset, 8 mm (9 / 10 mm\*) **selftightening follower fixed in metal rings**, 20 mm rounded forend, **stainless steel forend** for rebated doors, closed lockcase galvanised with self-securing screws, 2-throw, metal latch- and **reinforced full coated steel deadbolt nickel plated, maintenance free by life-time greasing**

#### Classification in accordance to DIN EN 12209

3 S 5 0 0 C 6 B C 2 0

### # 1 9500W0

#### SAG mortice lockcase in heavy duty quality

as above, but with 24 mm rounded (edged / 3 mm\* diagonal) forend for flat doors

### # 1 9300WK

→ as above, but with Whisper-Comfort noise reduction, see page...

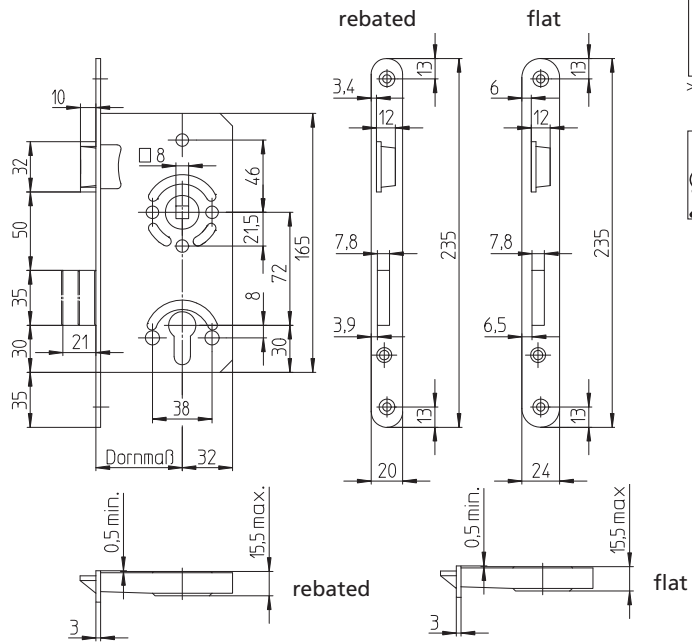
### # 1 9500WK

→ as above, but with Whisper-Comfort noise reduction, see page...

Note:

The variations, marked as \* are not subject of DIN 18251-1, class 5

## # 1 7480W0



**SAG Mortice lockcase for heavy duty doors, for Euro-profile cylinder, with key action on latchbolt, selftightening follower in metal rings, stainless steel finish forend, maintenance free by lifetime greasing**

**Further differs**

**SAG Bathroom lockcase for heavy duty doors,\***  
78 mm centre distance

**SAG differ plug\***  
For SAG profile cylinder lockcases

**Please order separately:**  
**# 1 BE 7460**

**Extra feature**

**Whisper-Comfort noise reduction**

**Optional extras**

**Metal cranked latchbolt\***

**snib holding function\***

**Selftightening follower, fixed in ball bearing**

**Adjustable follower with holes are protected against shavings by sleeves**

**Striking plates**

see page 1.22

Note: The variations, marked as \* are not subject of DIN 18251-1, class 4

#		Backset						Executions of forends						Follower				
		55	60	65	70	80	100	rebated door		flat door			stainless		steel		brass	
								18	20				24	satin	zinc	lacq.	satin	pol.
1 7480W0	○	●	●	●	○	●	○	●			●			○	○	●	○	○
1 7580W0	○	●	●	●	○	○			●		●			○	○	●	○	○
1 411800	○	●	●	●	○	○	○	●			●			○	○	●	○	○
1 412800	○	○	●	●	○	○			●		●			○	○	●	○	○



# 1 7480W0

SAG mortice lockcase for heavy duty doors

In accordance to DIN 18251-1, class 4, for heavy duty doors, with enhanced security requirements, for Euro profile cylinder with key action on latchbolt, 72 mm centre distance, 55 mm (60 / 65 / 70 / 80 / 100 mm) backset, 8 mm (9 / 10 mm\*) selftightening follower fixed in metal rings (bronze bearing), 20 mm (18 mm\*) rounded (edged) forend, stainless steel forend (satin brass / polished brass) for rebated doors, closed lockcase body galvanised with self-securing screws, 2-throw, metal latch- and deadbolt nickel plated, maintenance free by life-time greasing

Classification in accordance to DIN EN 12209

3 S 5 0 0 C 4 B C 2 0

# 1 7580W0

SAG mortice lockcase in heavy duty quality

as above, but with 24 mm rounded (edged / 3 mm\* diagonal) forend for flat doors

Classification in accordance to DIN EN 12209

3 S 5 0 0 C 4 B C 2 0

# 1 411800\*

SAG mortice lockcase in heavy duty quality

as bathroom mortice lockcase, 78 mm centre distance, 1-throw, with 8 mm deadbolt follower, as # 1 7480W0

Classification in accordance to DIN EN 12209

3 S 5 0 0 C 3 B G 2 0

# 1 412800\*

SAG mortice lockcase in heavy duty quality

as above, but with 24 mm rounded (edged / 3 mm\* diagonal) forend for flat doors

Classification in accordance to DIN EN 12209

3 S 5 0 0 C 3 B G 2 0

# 1 7480WK

→ as above, but with Whisper-Comfort noise reduction, see page

# 1 7580WK

→ as above, but with Whisper-Comfort noise reduction, see page

# 1 41180K\*

→ as above, but with Whisper-Comfort noise reduction, see page

# 1 41280K\*

→ as above, but with Whisper-Comfort noise reduction, see page

Note:

The variations, marked as \* are not subject of DIN 18251-1, class 4



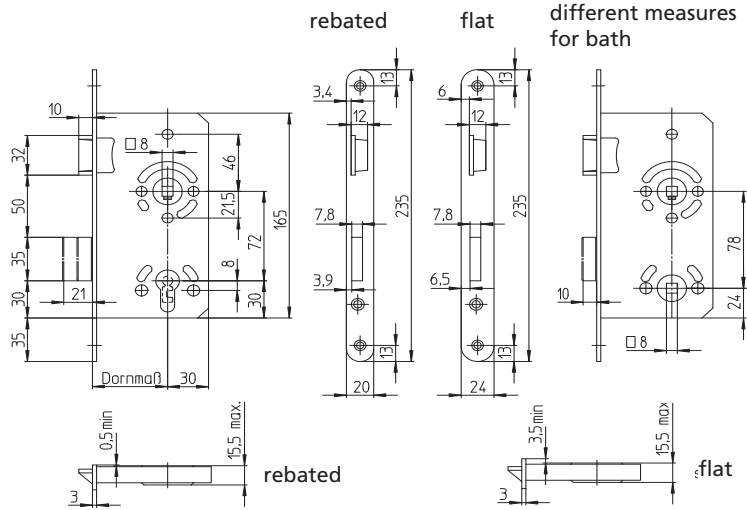


# Lockcases for heavy duty doors



# 1 7467W0

DIN Kl. 3  
25-30 kg/m<sup>2</sup>



**SAG Lockcase, sashlock for heavy duty doors, requirements to DIN EN 12209 (clas. 35500C2BC20), dimensions in accordance to DIN 18251-1, class 3, selftightening follower with steel inserts**

Extra features  
with „Whisper-Comfort“ noise reduction

Further differs

Striking plates  
see page 1.22

**SAG differ lockcase for heavy duty doors \***  
**SAG bathroom lockcase for heavy duty doors, 78 mm centre distance**

Note: The variations, marked as \* are not subject to DIN18251-1

#		Backset						Executions of forends						Follower					
		55	60	65	70	80	100	rebated door		flat door			stainless		steel		brass		
								18	20				24	satin	zinc	lacq.	satin	pol.	8
	1 7467W0	●	●	●	●			●			●		●		○		●	○	
	1 7567W0	○	●	●	●				●		●		●		○		●	○	
	1 246700	○	○	○	○			●			●		●		○		●	○	
	1 256700	○	○	○	○				●		●		●		○		●	○	
	1 411700	○	●	●	●			●			●		●		○		●	○	
	1 412700	○	●	●	●				●		●		●		○		●	○	



**# 1 7467W0**

SAG sashlock, requirements to DIN EN 12209 (clas. 3S500C2BC20), dimensions according to DIN18251-1, class 3, for Euro-profile cylinder, 72 mm centre distance, 55 mm (60/65) backset, 8 mm (9) selftightening follower, 20 mm round forend, stainless steel matt (Nickel-Silver lacquered), for rebated doors, with closed lockcase body, zinc plated, with selfsecuring screws, double throw, metal latchbolt und deadbolt nickel-plated, maintenance free by life-time greasing

**Classification in accordance to DIN EN 12209**

3 S 5 0 0 C 2 B C 2 0

**# 1 7567W0**

SAG sashlock, requirements to DIN EN 12209 (clas. 3S500C2BC20), dimensions according to DIN18251-1, class 3, as above but with 24 mm round forend for flat door

**Classification in accordance to DIN EN 12209**

3 S 5 0 0 C 2 B C 2 0

**# 1 246700\***

SAG differ lockcase, without key action on bolt, with 1 key each 1S24660, else as # 17467W0

**Classification in accordance to DIN EN 12209**

3 S 5 0 0 C 1 B 0 2 0

**# 1 256700\***

SAG sashlock, as above but with 24 mm rounded forend for flat doors

**# 1 411700\***

SAG bathroom lockcase, 78 mm distance, single throw, 8 mm dead-follower, else as #17467W0

**Classification in accordance to DIN EN 12209**

3 S 5 0 0 C 1 B G 2 0

**# 1 412700\***

SAG bathroom lockcase, as above but with 24 mm rounded forend for flat doors

Note:

The variations, marked as \* are not subject to DIN18251-1, class 3.

**# 1 7467WK**

→ as above, but with Whisper-Comfort noise reduction, see page

**# 1 7567WK**

→ as above, but with Whisper-Comfort noise reduction, see page

**# 1 24670K\***

→ dito, jedoch mit Flüster-Comfort Geräuschdämmung, Seite 2.3

**# 1 25670K\***

→ as above, but with Whisper-Comfort noise reduction, see page

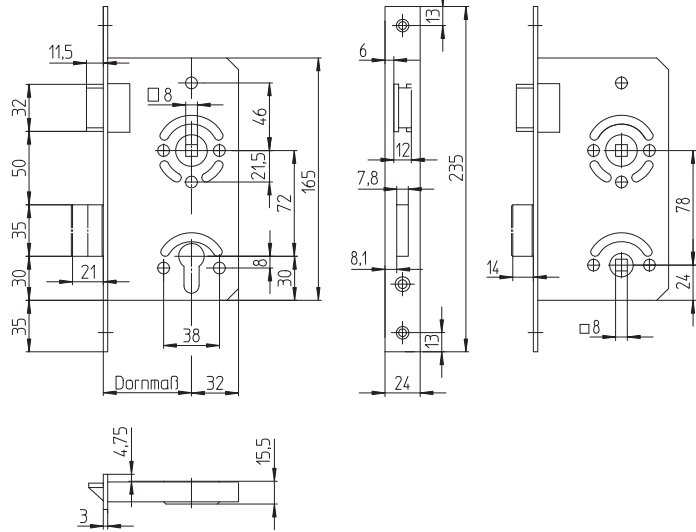
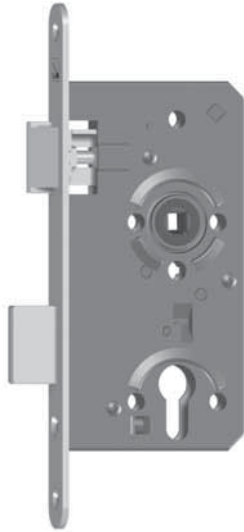
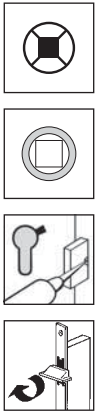
**# 1 41170K\***

→ as above, but with Whisper-Comfort noise reduction, see page

**# 1 41270K\***

→ as above, but with Whisper-Comfort noise reduction, see page

## # 1 7688W0



different measures for bath

DIN Kl. 4  
> 30 kg/m<sup>2</sup>

**SAG Mortice lockcase, sashlock for heavy duty doors, for Euro-profile cylinder, with key action on latchbolt, with reversible latchbolt, selftightening follower in metal rings, stainless steel finish forend, maintenance free by lifetime greasing**

Striking plates



see page 1.22

## # 1 7688FW

**SAG Mortice lockcase, latchlock for heavy duty doors, for Euro-profile cylinder, with key action on latchbolt, with reversible latchbolt, without deadbolt**

## # 1 7688R0

**SAG Mortice lockcase, deadlock for heavy duty doors, for Euro-profile cylinder, without latchbolt, without follower**

Further differs

**SAG Bathroom lockcase for heavy duty doors, with reversible latchbolt, 78 mm centre distance**

**SAG differ plug\***  
For SAG profile cylinder lockcases

Please order separately:

# 1 BE 7460

#		Backset						Executions of forends						Follower						
		55	60	65	70	80	100	flat door				stainless		steel		brass				
								18	20	24		satin	zinc	lacq.	satin	pol.	8		9	10
1 7688W0		○	○	●	○	○	○	○	●	○	○	○	○	○	○	○	○	○	○	○
1 7688FW		○	○	●	○	○	○	○	●	○	○	○	○	○	○	○	○	○	○	○
1 7688R0		○	○	●	○	○	○	○	●	○	○	○	○	○	○	○	○	○	○	○
1 428800		○	○	●	○	○	○	○	●	○	○	○	○	○	○	○	○	○	○	○

### # 1 7688W0

SAG mortice lockcase in heavy duty quality with reversible latchbolt (for DIN left and DIN right handed doors)

Dimensions in accordance to DIN 18251-1, class 4, for heavy duty doors, for Euro profile cylinder with key action on latchbolt, 72 mm centre distance, 55 mm (60 / 65 / 70 / 80 mm) backset, 8 mm (9 mm) selftightening follower fixed in metal rings, 24 mm (18 / 20 mm) edged (rounded) forend, satin stainless steel forend (polished brass) for flat doors, closed lockcase galvanised with self-securing screws, 2-throw, metal latch- and deadbolt nickel plated, maintenance free by life-time greasing

**Classification in accordance to DIN EN 12209**

3 S 5 0 0 C 4 B C 2 0

### # 1 428800

SAG mortice latchlock in heavy duty quality with reversible latchbolt (for DIN left and DIN right handed doors), for Euro profile cylinder with key action on latchbolt, without deadbolt, as # 1 7688W0

**Classification in accordance to DIN EN 12209**

3 S 5 0 0 C 3 B G 2 0

### # 1 7688FW

SAG mortice deadlock in heavy duty quality (for DIN left and DIN right handed doors), for Euro profile cylinder without key action on latchbolt, without latchbolt, as # 1 7688W0

**Classification in accordance to DIN EN 12209**

3 S 5 0 0 C - B C 2 0

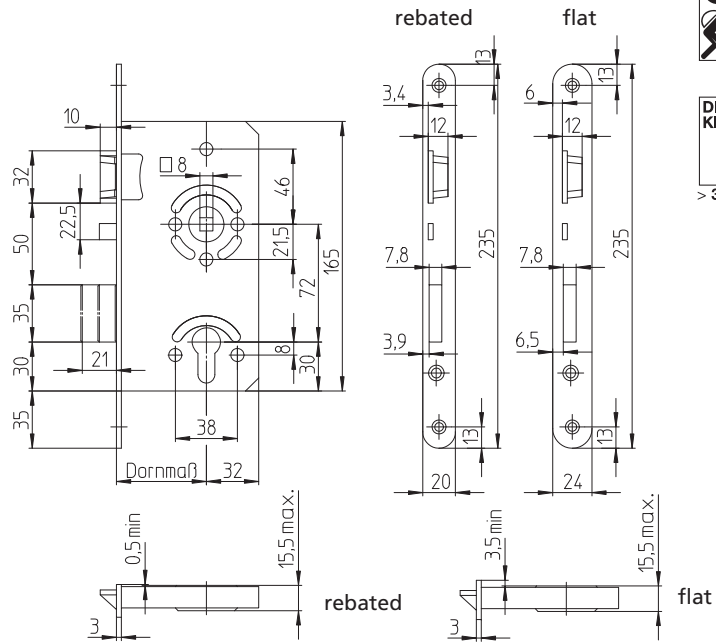
### # 1 7688R0

SAG mortice latchlock in heavy duty quality with reversible latchbolt (for DIN left and DIN right handed doors), as bathroom lock, 78 mm centre distance, 1-throw, with 8 mm deadbolt follower as # 1 7688W0

**Classification in accordance to DIN EN 12209**

3 S 5 0 0 C 4 B C 0 0

# 1 7470WK



**SAG mortice lockcase with anti-thrust latchbolt, for Euro-profile cylinder**, with key action on latchbolt, standard with Whisper-Comfort noise reduction

Striking plates

see page 1.22



# 1 7470FK

**SAG latchlock with anti-thrust latchbolt, for Euro-profile cylinder**, with key action on latchbolt, without deadbolt, standard with Whisper-Comfort noise reduction

Further differs

**SAG differ plug\***  
For SAG profile cylinder lockcases

**Please order separately:**  
# 1 BE 7460

Note:  
The variations, marked as \* are not subject of DIN 18251-1, class 4

#		Backset					Executions of forends						Follower					
		55	60	65	80	100	rebated door		flat door		*	stainless		steel		brass		
							18	20	24			satin	zinc	lacq.	satin	pol.	8	
1 7470WK	●	●	○	●	○		●			●	○	●	●	○	○	○	○	○
1 7570WK	●	○	○	○	○			●		●	○	○	○	○	○	○	○	○
1 7470FK	●	○	○	○	○		●			●	○	○	○	○	○	○	○	○
1 7570FK	●	○	○	●	○			●		○	●	○	○	○	○	○	○	○



**# 1 7470WK**

SAG mortice lockcase with anti-thrust latchbolt and Whisper-Comfort noise reduction In accordance to DIN 18251-1, class 4, for heavy duty doors, for Euro profile cylinder with key action on latchbolt, 72 mm centre distance, 55 mm (60 / 65 / 80) backset, 8 mm (9 / 10 mm\*) selftightening follower fixed in metal rings (bronze bearing), 20 mm (18 mm\*) rounded (edged) forend, nickel-silver lacquered (stainless steel satin / polished brass) for rebated doors, closed lockcase body galvanised with self-securing screws, 2-throw, metal latch-, anti-thrust latch and deadbolt nickel plated, maintenance free by life-time greasing

**Classification in accordance to DIN EN 12209**  
 3 S 5 0 0 C 4 B C 2 0

**# 1 7570WK**

SAG mortice lockcase with anti-thrust latchbolt and Whisper-Comfort noise reduction, as above, but with 24 mm rounded (edged) forend for flat doors

**# 1 7470FK**

SAG mortice lockcase with anti-thrust latchbolt and Whisper-Comfort noise reduction, for Euro profile cylinder with key action on latchbolt, without deadbolt, else as # 17470W0

**Classification in accordance to DIN EN 12209**  
 3 S 5 0 0 C - B C 2 0

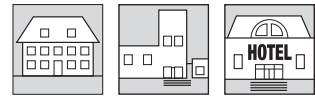
**# 1 7570FK**

SAG mortice lockcase with anti-thrust latchbolt and Whisper-Comfort noise reduction, as above, but with 24 mm rounded (edged) forend for flat doors

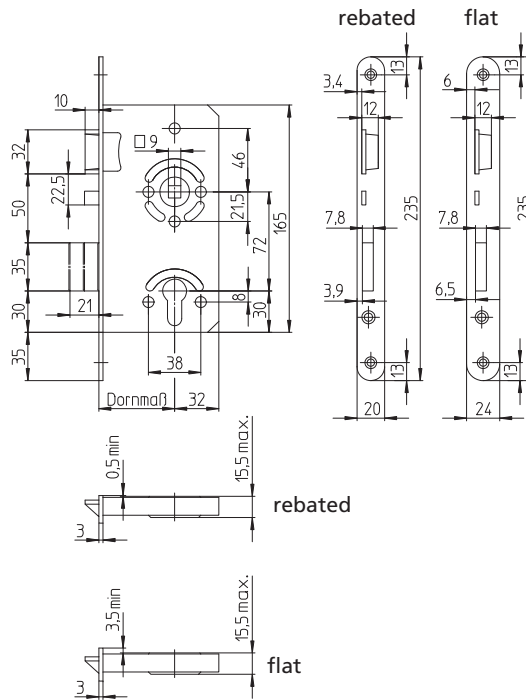
Note:  
 The variations, marked as \* are not subject of DIN 18251-1.



# Lockcases for heavy duty doors



## # 1 7473W0



**SAG mortice lockcase, with anti-thrust latchbolt for fire-rated doors, for Euro-Profile cylinder, with key action on latchbolt**

Striking plates

see page 1.22



## # 1 7473FW

**SAG latchlock with anti-thrust latchbolt for fire-rated doors, without deadbolt**

Note: Increased security due to 2kN counterforce of latchbolt. (external certified)

#		Backset					Executions of forends						Follower							
		55	60	65	80	100	rebated door		flat door			stainless		steel		brass				
							18	20	24			satin	zinc	lacq.	satin	pol.	8			9
1 7473W0				●				●			○		○							●
1 7573W0				●					●		○		○							●
1 7473FW				●				●			○		○							●
1 7573FW				●					●		○		○							●

### # 1 7473W0

SAG mortice lockcase, with anti-thrust latchbolt for fire-rated doors, according to DIN 18250, dimensions in accordance to DIN 18251-1, class 4, for exit doors, for Euro-Profile cylinder, with key action on latchbolt, 72 mm centre distance, 65 mm backset, 9 mm selftightening follower in metal rings, 20 mm rounded forend, nickel-silver lacquered (stainless steel satin) for rebated doors, closed lockcase zinc plated, with self-securing screws, double throw, metal latch-, anti-thrust- and deadbolt

### # 1 7573W0

SAG mortice lockcase, with anti-thrust latchbolt for fire-rated doors according to DIN 18250, as before, but with 24 mm rounded forend for flat doors

### # 1 7473FW

SAG latchlock, with anti-thrust latchbolt for fire-rated doors according to DIN 18250, without deadbolt, else as # 1 7473W0

### # 1 7573FW

SAG latchlock, with anti-thrust latchbolt for fire-rated doors according to DIN 18250, as above but with 24 mm rounded forend for flat doors

Fire protection registration according to ABP

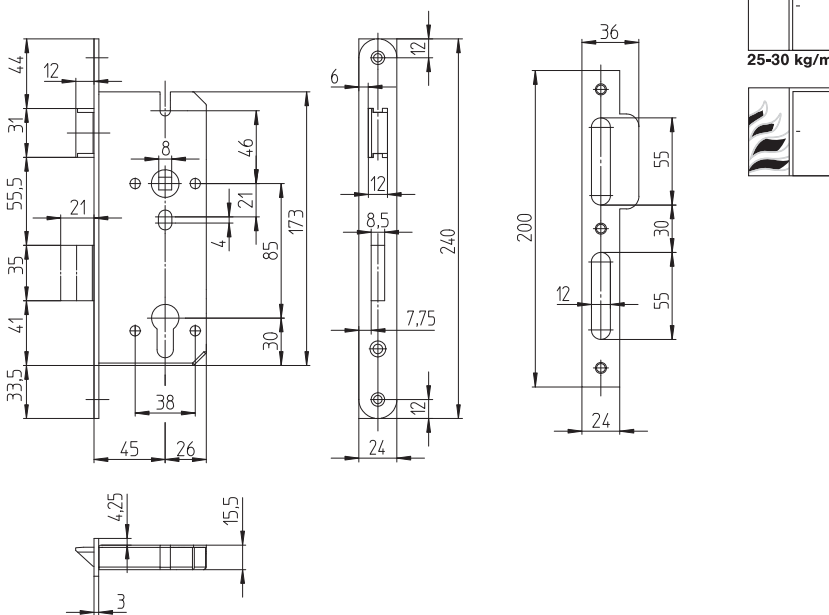
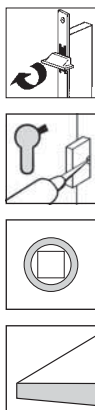




# Lockcases for heavy duty doors



## # 1 7586W0



**Key icon:** SAG mortice lockcase, for Euro-Profile cylinder, with key action on latchbolt, for inner and functional doors, fire protected version, 85 mm centre distance, usable for right and left handed doors, double throw, including striking plate


## # 1 7586FW

**Key icon:** SAG mortice lockcase, for Euro-Profile cylinder, with key action on latchbolt, for inner doors, fire protected version, 85 mm centre distance, for right or left handed doors, including striking plate

#		Backset			Executions of forends								Follower										
		45	50	55	flat door					stainless		steel		brass									
					18	20	24			sain	pol.	lacq.	satin	pol.	7	8	8,5	9	10	7	8	8,5	9
<b>Key icon</b> 1 7586W0		●						○	●	○	○	●				●	●		○	○			
1 7586FW		●					●	○	●	○	○	●			●	●		○	○				


# 1 7586W0

SAG mortice lockcase, with reversible latchbolt for right or left handed doors, dimensions in accordance to DIN EN 12209 (classification key 3S510C2BC20), alternatively dimensions are valid in accordance to DIN EN 18251-1, class 3, suitable for the integration in fire and / or smoke protecting doors, for Euro-Profile cylinder, with key action on latchbolt, 85 mm centre distance, 45 mm backset, 8 mm (9 mm) follower (selftightening follower), fixed in bearings, 24 mm squared (rounded) forend and striking plate nickel-silver lacquered (gold lacquered / stainless steel matt / stainless steel polished), with marking "CE" and "Made in Germany" on forend, for flat doors, closed lockcase body galvanised, with self-securing screws, double throw, steel latchbolt and metal deadbolt nickel-plated.

	Schulte-Schlagbaum AG Postfach 10 12 40 42512 Velbert
1309 - CPD - 0095	<b>2008</b>
EN 12209 : 2004-03	3   S   5   1   0   C   2   B   C   2   0

# 1 7586FW

SAG mortice lockcase, with reversible latchbolt for right or left handed doors, for Euro-Profile cylinder, with key action on latchbolt, without deadbolt, dimensions in accordance to DIN EN 12209 (classification key 3S510C-BC20), suitable for the integration in fire and / or smoke protecting doors, other dimensions as # 1 7586W0, but with striking plate # 1 LB2560F

	Schulte-Schlagbaum AG Postfach 10 12 40 42512 Velbert
1309 - CPD - 0095	<b>2008</b>
EN 12209 : 2004-03	3   S   5   1   0   C   ---1*   B   C   2   0
*1 - latch lockcase / no protective effect	

Note:

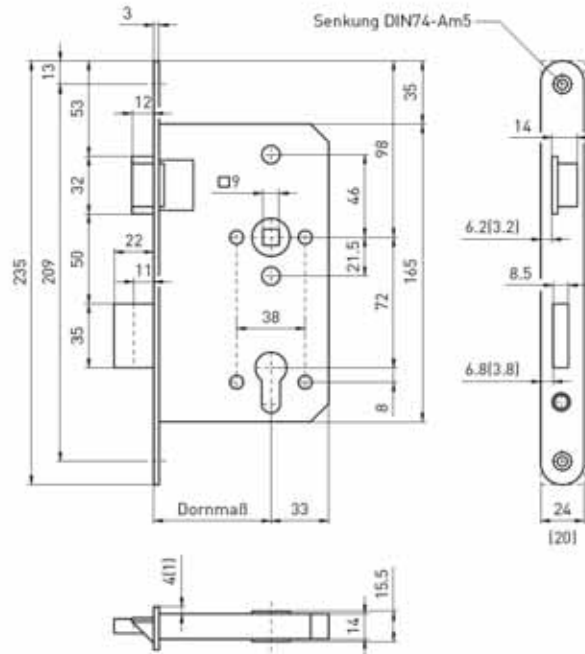
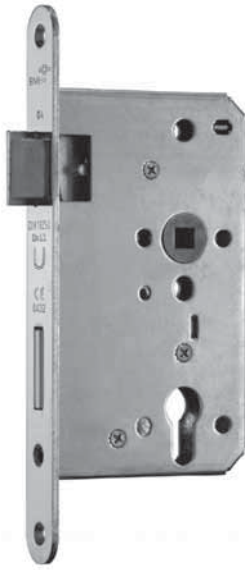
Enclosed striking plates just go for accordance to the measurements and imaging the hole pattern.



# Lockcases for heavy duty doors



## # 1 8354W0



**SAG mortice lockcase, for European profile cylinder, with key action on bolt, for fire protection doors, DIN 18250, class 4, forend 20 mm**


## # 1 8352W0

**SAG mortice lockcase, for European profile cylinder, with key action on bolt, for fire protection doors, DIN 18250, class 4, forend 24 mm**

#		Backset						Executions of forends								Follower					
		55	60	65	70	80	100	rebated door		flat door			stainless		steel		brass		8	9	10
								18	20	24				satin	zinc	lacq.	satin	pol.			
1 8354W0		○		●		○		●		●		○	○	●						●	
1 8352W0		○		●		○	○		●		●		○	○	●					●	


# 1 8354W0

SAG mortice lockcase for fire protection doors according to DIN 18250, class 4, with key action on bolt, 72 mm distance, 65 mm (55 / 80 mm) backset, 9 mm follower, 20 mm rounded forend, nickel-silver lacquered (zinc plated / stainless steel satin) for rebated doors, closed lockcase, zinc-plated, 2 throw, metal latch- and deadbolt zinc-plated (nickel-plated)

	Beyer & Müller GmbH & Co. KG Postfach 100154 D-42579 Heiligenhaus
0432-BPR-0116	<b>2007</b>
EN 12209 : 2004	3 M 5 1 0 F 3 H C 2 0

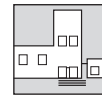
# 1 8352W0

SAG mortice lockcase for fire protection doors according to DIN 18250, class 4, with key action on bolt, 72 mm distance, 65 mm (55 / 80 / 100 mm) backset, 9 mm follower, 24 mm rounded forend, nickel-silver lacquered (zinc plated / stainless steel satin) for flat doors, closed lockcase, zinc-plated, 2 throw, metal latch- and deadbolt zinc-plated (nickel-plated)

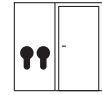
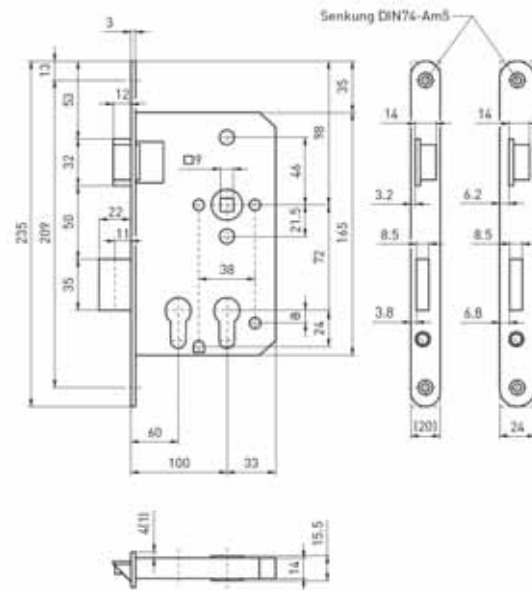
	Beyer & Müller GmbH & Co. KG Postfach 100154 D-42579 Heiligenhaus
0432-BPR-0116	<b>2007</b>
EN 12209 : 2004	3 M 5 1 0 F 3 H C 2 0



**Lockcases for heavy duty doors**



**# 1 8358W0**



**Key icon** SAG Special mortice lockcase, for double profile cylinder with key action on bolt, 32 / 65 mm backset, 20mm rounded forend


**# 1 8356W0**

**Key icon** SAG Special mortice lockcase, for double profile cylinder with key action on bolt, 24mm rounded forend for flat doors, else as above

#		Backset							Executions of forends							Follower				
		55	60	65	70	80	100	rebated door		flat door				stainless		steel		brass		
								18	20	24					satin	zinc	lacq.	satin	pol.	
1 8358W0				●					●		●		○	●	○					●
1 8356W0				●						●	●		○	●	○					●


# 1 8358W0

SAG Special mortice lockcase, for double profile cylinder, dimensions according to DIN 18250, 2 x profile cylinder with key action on bolt, to be used for two different cylinders, 72mm distance, **32 / 65 mm backset**, 9 mm follower, 20 mm rounded forend, zinc-plated (nickel-silver lacquered / stainless steel satin) for rebated doors, closed lockcase, zinc-plated, 1 throw, metal latchbolt and deadbolt zinc-plated (nickel-plated)

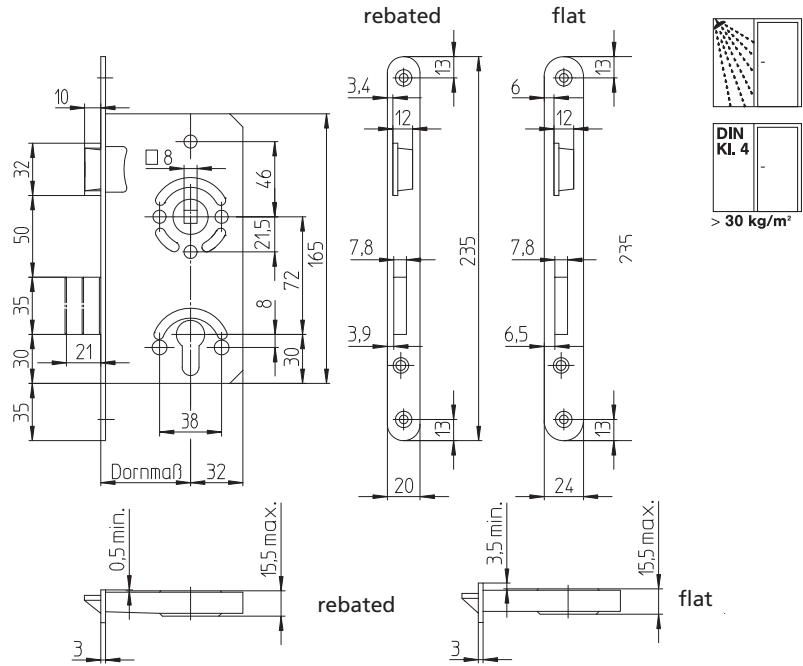
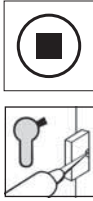
	Beyer & Müller GmbH & Co. KG Postfach 1001 54 D-42579 Heiligenhaus
0432-BPR-0116	<b>2007</b>
EN 12209 : 2004	<b>3 M 5 1 0 F 3 H C 2 0</b>

# 1 8356W0

SAG Special mortise lockcase, for double profile cylinder, dimensions according to DIN 18250, as above, BUT with 24 mm rounded forend for flat doors

	Beyer & Müller GmbH & Co. KG Postfach 1001 54 D-42579 Heiligenhaus
0432-BPR-0116	<b>2007</b>
EN 12209 : 2004	<b>3 M 5 1 0 F 3 H C 2 0</b>

**# 1 7468NT**



**SAG mortice lockcase for wet room doors,** for Euro-profile cylinder, brass follower, 20 mm stainless steel, brass latch nickel-plated, lockcase / steel deadbolt with KTL-finish

Striking plates

see page 1.22



Further differs

**SAG mortice lockcase for wet room doors, bathroom,\*** 78 mm centre distance

Note: The variations, marked as \* are not subject to DIN18251-1, class 4

#		Backset						Executions of forends						Follower					
		55	60	65	70	80	100	rebated door		24			stainless		steel		brass		
								18	20				zinc	lacq.	satin	pol.	8	9*	10*
	<b>1 7468NT</b>	●	●	●	○	○		●				●					●	○	○
	<b>1 7568NT</b>	○	○	○	○	○				●		●					●	○	○
	<b>1 4138NT</b>	●	●	●	○	○		●				●					●	○	○
	<b>1 4148NT</b>	○	○	○	○	○				●		●					●	○	○



# 1 7468NT

SAG mortice lockcase for wet room doors, dimensions in accordance to DIN 18251-1, class 4, for interior and entrance doors, for Euro-profile cylinder, 72 mm centre distance, 55 mm (60 / 65 / 70 / 80 mm) backset, 8 mm (9\* / 10\* mm) brass follower in ball bearing, 20 mm rounded forend stainless steel satin for rebated doors, closed lockcase with KTL-finish, all springs with special coating, double throw, brass latchbolt nickel-plated, steel latchbolt with KTL-finish with lubrication channel

**Classification according to DIN EN 12209**

3 S 5 0 0 D 4 B C 2 0

# 1 7568NT

SAG mortice lockcase for wet room doors, as above but with 24 mm rounded forend for flat doors

# 1 4138NT\*

SAG mortice lockcase for wet room doors, bathroom lock, 78 mm centre distance, single throw, with 8 mm "deadbolt follower", otherwise as # 1 NT

**Classification according to DIN EN 12209**

3 S 5 0 0 D 3 B G 2 0

# 1 4148NT\*

SAG mortice lockcase for wet room doors, as above but with 24 mm rounded forend for flat doors

Note:  
The variations, marked as \* are not subject to DIN18251-1, class 4

PIV  
Prüfinstitut  
Schlöser und Beschläge Velbert  
Wienstraße 41  
D-42699 Velbert  
Tel. +49 (0) 2051-8506-0  
Fax +49 (0) 2051-8506-68

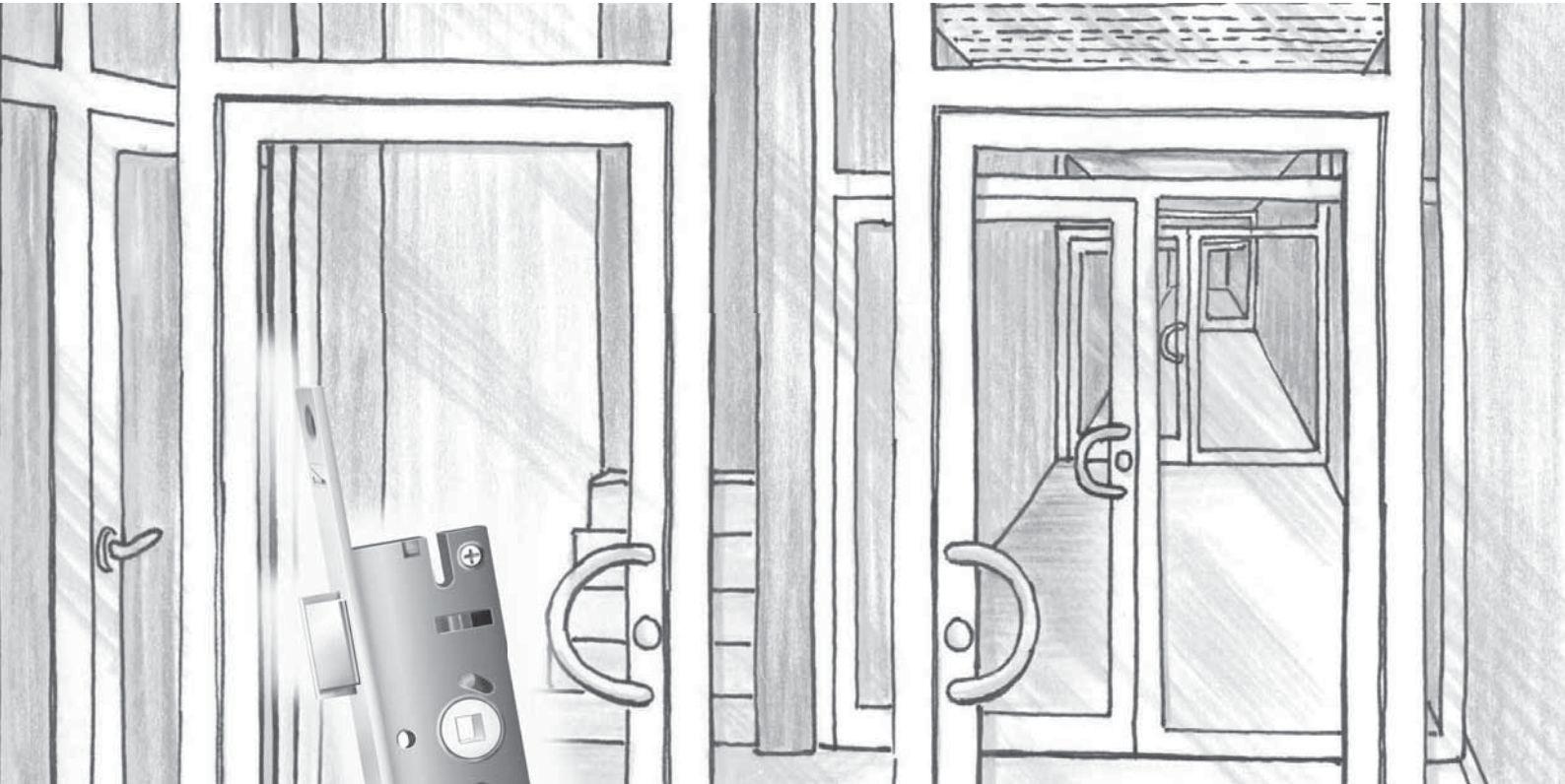
Prüfbericht  
Nr. 20-30/03

1. Auftraggeber und Hersteller	Schulte-Schlagbaum AG Velbert
2. Bezeichnung des Prüfgegenstandes	Einsteckschloss PZW für Nassraumtüren Art.-Nr. = 1 7468NT
3. Prüfauftrag	Kontrollmaßstab DIN 50021-SS Prüfzyklen entsprechend EN 1670 Klasse 3
4. Prüfrichtung	Salzsäure-Prüfkammer
5. Prüfergebnis	Der Prüfgegenstand (Nr. 2) entspricht den Anforderungen des Prüfauftrages (Nr. 3) Einzelheiten der Prüfung, siehe Anlage
6. Datum der Prüfung	19. August 2003
7. Ort der Prüfung	PIV Prüfinstitut Schlösser und Beschläge Velbert
8. Verantwortlicher für die Prüfstelle und für die korrekte Durchführung der Prüfung	H.-J. Kirchhoff Dipl.-Ing.
9. Datum des Prüfberichtes	21. August 2003
10. Umfang des Prüfberichtes	1. Seite Deckblatt 2. Seiten Anlagen
11. Zusatzbedingungen zu diesem Prüfbericht	1. Es gelten unsere Geschäftsbedingungen. 2. Die Prüfergebnisse beziehen sich nur auf den geprüften Prüfgegenstand (Nr. 2). 3. Der Prüfbericht darf nicht verändert und nur als Ganzes veröffentlicht werden.
12. Prüfbericht genehmigt und freigegeben	H.-J. Kirchhoff

Das PIV ist eine  
DIN CERTIFIED  
Autorisierte Prüfstelle für DIN V 18251, EN V 18251, DIN V 18252, EN V 18252, EN V 18253, EN V 18254, EN V 18255, EN V 18256, EN V 18257  
DIN V 18258, EN V 18258 und geprüfter nach DAL-PPD 0171  
Prüfstelle für DIN 18251 und Maßnahmsanforderungen  
Leiter des PIV-Prüfinstitutes: Hans-Jürgen Kirchhoff Dipl.-Ing.







### 3.

### Lockcases for narrow stile doors



### # 1 8407W0

SAG **Compact Class** sashlock in accordance to DIN 18251-2, class 5, for narrow stile doors, for Euro profile cylinder with key action on latchbolt, 92 mm centre distance, with reversible latch bolt, latch bolt projection 12 mm; 8 mm (7/8,5/9/10 mm\*) follower, **fixed in metal bear rings**, dead bolt projection 20 mm, 1-throw extra long, dead bolt with 2 loose bonded steel pins as **anti-saw protection**; flat forend 24 x 3 mm (16/18/20/22 mm\*) or U-shape-forend\* (24x6 mm); lock body zinc plated, from 30 mm backset onwards **breakthroughs for rose fixings with norm distance**

Backset: ... mm.

Available variations of forend:

Zinc plated / satin stainless steel incl. latch and dead bolt nickel plated

Available extra feature / optional extras;

- Whisper comfort noise reduction
- Further latch bolt and dead bolt variations\*:  
5 mm, further variations on demand
- Snib holding function \*:30 mm backset onwards
- Selftightening follower

Available accessories:

- Striking plate

#### Classification in accordance to DIN EN 12209

3 S 5 0 0 C 4 B A 2 0

### # 1 8507W0\*

SAG **Compact Class**

as above, but prepared for swiss rounded cylinder, 94 mm centre distance

#### Classification in accordance to DIN EN 12209

3 S 5 0 0 C 4 B A 2 0

Note:

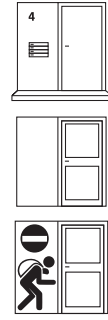
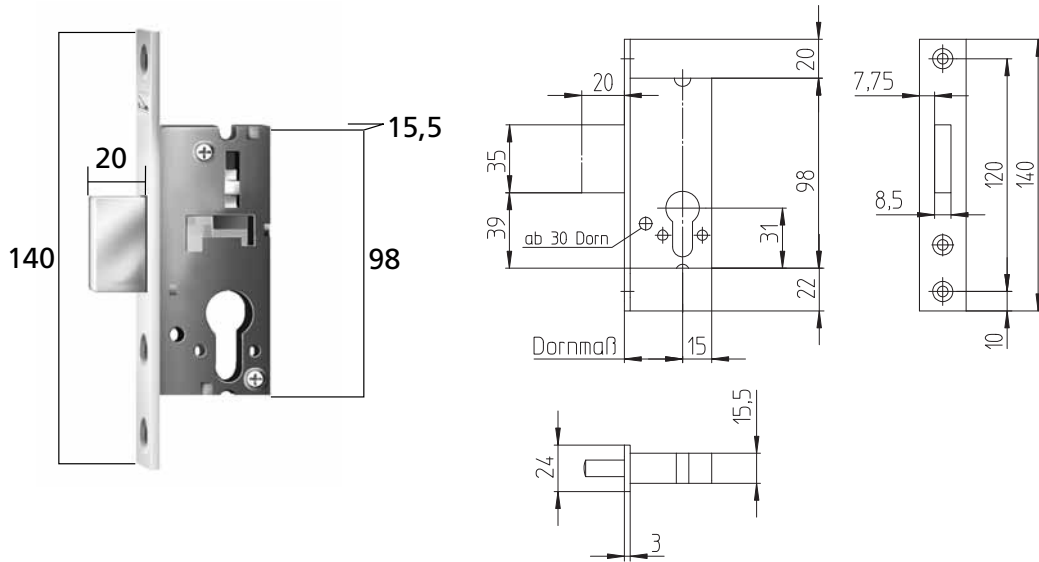
The variations, marked as \* are not subject of DIN 18251-2



**Lockcases for narrow stile doors**



# 1 841000



**SAG deadlock, for Euro profile cylinder, single throw**, deadbolt with antisaw protection

Further differs

**SAG deadlock for swiss round cylinder**

**SAG differ plugs** for SAG profile cylinder locks  
**Please order separately**  
# 1 BE 7460

Extra features

**Further deadbolt 5 mm** variations on request

#	M	Backset													5	●	●	●	Executions of forends		●				●											
		16	18	20	22	24	22	24	22	24	zinc	stainless satin	7	8					8,5	9	10	7	8	8,5	9	10										
1 841000			●	●	●	○	○	○	○	○	○	○	○	○	○	○	○	○	○	○	●	●														
1 851000			○	○	○	○	○	○	○	○	○	○	○	○	○	○	○	○	○	○	○	○														

## Specification text

### # 1 841000

SAG **Compact Class** deadlock, requirements to DIN EN 12209 (clas. 3-00C3BA00), for narrow stile doors, for Euro-profile cylinder, single throw, 20 mm deadbolt projection, deadbolt with antisaw protection, squared forend 24 x 3 mm (16/18/20/22 mm); zinc plated or stainless steel, through fixing holes for security rose fittings (for backset > 30 mm)

Backset: ... mm.

Available variations of forend:

Zinc plated / satin stainless steel incl. latch and dead bolt nickel plated

Available extra feature / optional extras;

- Further latch bolt and dead bolt variations\*:  
5 mm, further variations on demand

#### Classification in accordance to DIN EN 12209

3 S 5 0 0 C 3 B A 2 0

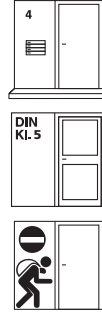
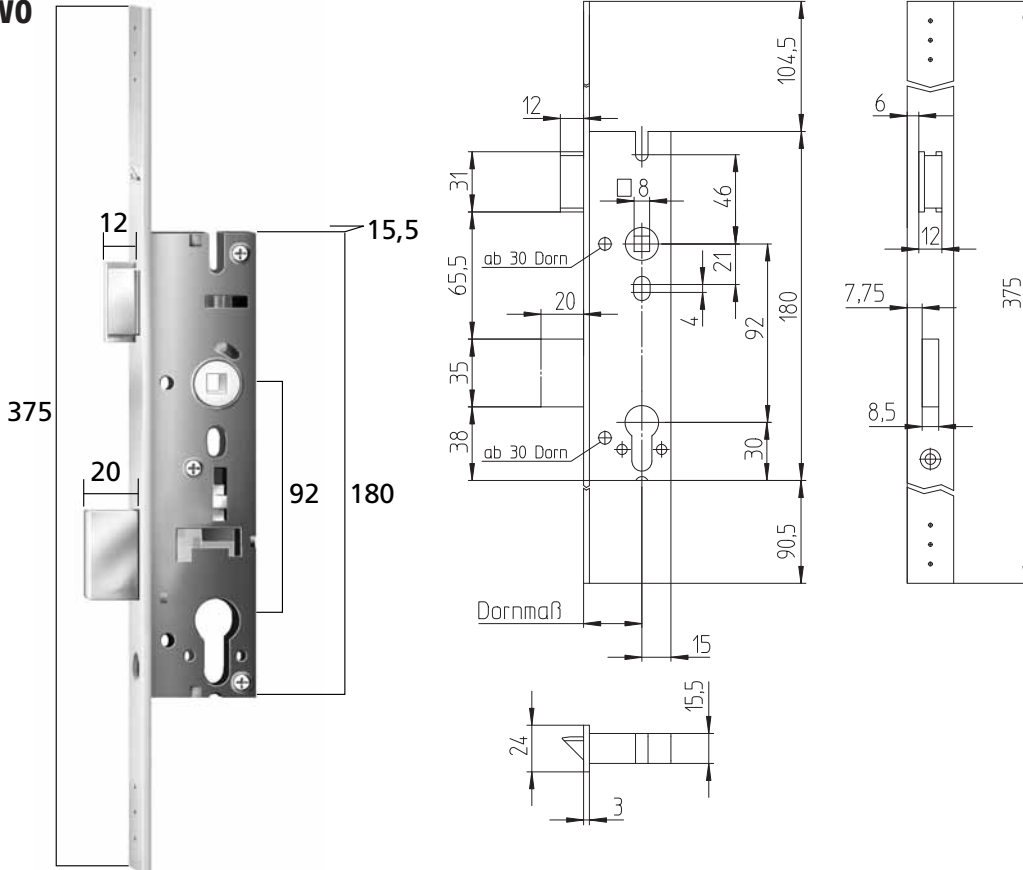
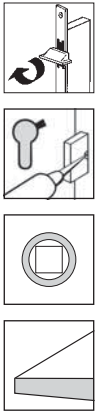
### # 1 851000

SAG **Compact Class** deadlock, requirements to DIN EN 12209 (clas. 3-00C3BA00), as above, but prepared for round cylinder, 94 mm centre distance

#### Classification in accordance to DIN EN 12209

3 S 5 0 0 C 3 B A 2 0

## # 1 8419W0



**SAG refurbishment lockcase**, with latch- and deadbolt, for Euro profile cylinder, with key action on bolt, single throw, specially for repair and refurbishment applications, with **extra long forend**, for individual adaption to existing fixing positions, deadbolt with anti-saw protection, incl. st/st fixing screws

### Further differs



**SAG refurbishment lockcase**  
for swiss round cylinder, 94mm distance



**SAG differ plugs**  
for SAG euro profile lockcases  
**Please order separately**  
# 1 BE 7460

### Extra features



**Whisper-Comfort noise reduction**

#	☾*	Backset											Executions of forends		Execution of forends				Execution of forends									
		18	20	22	25	27	30	33	35	38	40	45	50	60	zinc	stainless satin	7	8	8,5	9	10	7	8	8,5	9	10		
1 8419W0	○		○	●	●	○	○								●	●	●	●										
1 8519W0			○	○	○	○	○								●	●	●	●										

## Specification text

### # 1 8419W0

SAG refurbishment sashlock, requirements to DIN EN 12209 (clas. 3S500C4BA20), dimensions according to DIN18251-2, class 5, for narrow stile doors, for Euro-profile cylinder, specially for repair and refurbishment applications, with extra long forend (24 x 3 x 375 mm), for individual adaption to existing fixing positions, with reversible latchbolt for right and left handed doors, 12 mm latchbolt projection, 92 mm centre distance, 8 mm follower with steel inserts, single throw, 20 mm deadbolt projection, deadbolt with anti-saw protection, forend stainless steel, through fixing holes for security rose fittings (for backset > 30 mm), with key action on latchbolt, incl. stainless steel screws

Backset: . . . mm.

Available extra feature / optional extras;

- Whisper-Comfort noise reduction

#### Classification in accordance to DIN EN 12209

3 S 5 0 0 C 4 B A 2 0

### # 1 8519W0

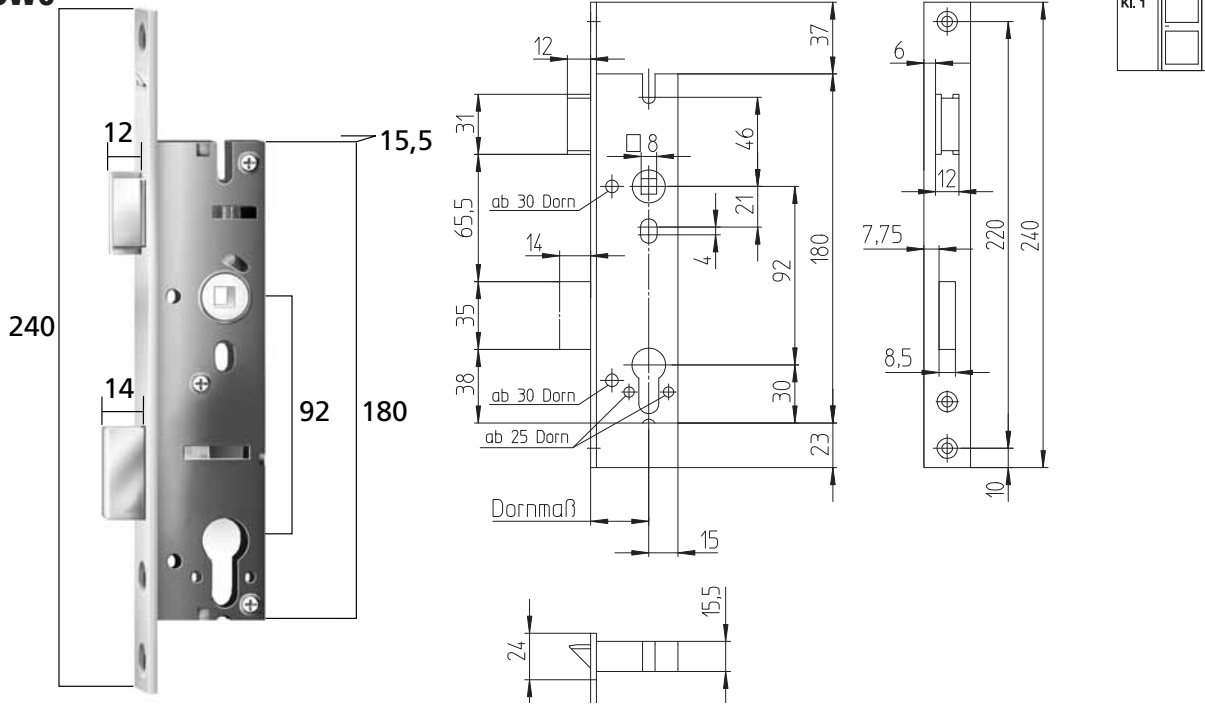
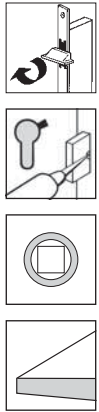
SAG **Compact Class** refurbishment sashlock, as above, but for swiss round cylinder 94 mm distance

#### Classification in accordance to DIN EN 12209

3 S 5 0 0 C 4 B A 2 0



## # 1 8405W0



**SAG sashlock, single throw**

Further differs

**SAG sashlock for swiss round cylinder, 94 mm distance**

**SAG differ plugs for SAG euro profile lockcases**  
**Please order separately**  
**# 1 BE 7460**

Extra features

**Whisper-Comfort noise reduction**

**Snib holding function\***  
 from 30 mm backset on

**Further latch and dead bolt variations\***  
 on demand with indication quantity in question

Note: The variations, marked as \*, are no subject to DIN 18251-2.

#		Backset		Executions of forends																					
				zinc	stainless satin	7	8											8,5	9	10	7	8	8,5	9	10
1 8405W0		18 20 22 25 27 30 33 35 38 40 45 50 60		16*	18*	20*	22*	24	22	24	22	24	zinc	stainless satin	7	8	8,5	9	10	7	8	8,5	9	10	
1 8505W0*																									

## Specification text

### # 1 8405W0

**SAG Compact Class** sashlock, requirements to DIN EN 12209 (clas. 3S500C2BA20), dimensions according to DIN18251-2, class 1, for narrow stile doors, for Euro-profile cylinder, with reversible latchbolt for right and left handed doors, 12 mm latchbolt projection, 92 mm centre distance, 8 mm (7/8,5/9/10) follower, single throw, 14 mm deadbolt projection, squared forend 24 x 3 mm, (16/18/20/20 mm\*) or U-Profile\* (22/24 x 6/8 mm) zinc plated or stainless steel, through fixing holes for security rose fittings (for backset > 30 mm), with key action on latchbolt

Backset: . . . mm.

Available variations of forend:

Zinc plated / satin stainless steel incl. latch and dead bolt nickel plated

Available extra feature / optional extras;

- Whisper comfort noise reduction
- Further latch bolt and dead bolt variations\*:  
5 mm, further variations on demand
- Snib holding function \*:30 mm backset onwards
- Selftightening follower

#### Classification according to DIN EN 12209

3 S 5 0 0 C 2 B A 2 0

### # 1 8505W0\*

SAG sashlock, requirements to DIN EN 12209 (clas. 3S500C2BA20), as above but prepared for round cylinder, 94 mm centre distance

#### Classification according to DIN EN 12209

3 S 5 0 0 C 2 B A 2 0

Note:

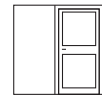
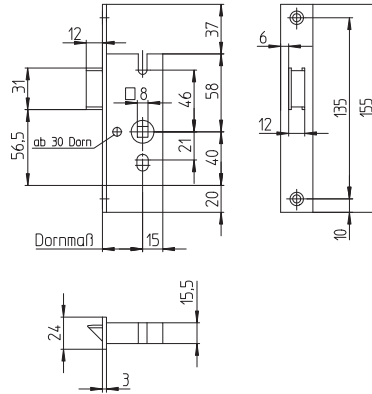
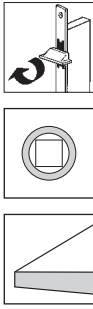
The variations, marked as \* are not subject to DIN18251-2



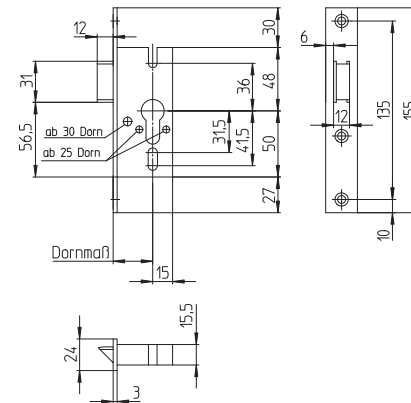
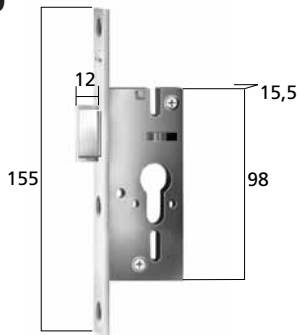
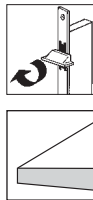
# Lockcases for narrow stile doors



## # 1 341200



## # 1 841200



### # 1 341200

SAG Latchlock



### # 1 841200

SAG Latchlock, for profile cylinder

Further differs



### SAG differ plugs

for SAG profile cylinder locks

Please order separately

# 1 BE 7460

Extra features



### Snib holding function

from 30 mm backset on

### Other measures on demand

#	☾★	Backset													Executions of forends		●				◐																											
		18	20	22	25	27	30	33	35	38	40	45	50	60	5	16	18	20	22	24	22	24	22	24	zinc	stainless satin	7	8	8,5	9	10	7	8	8,5	9	10												
1 341200		●	●	○	●	●	●	●	●	○	○	○	○	○						●					●	○	○	●	○	○	○	○	○	○	○	○	○	○	○	○	○	○	○					
1 841200	🔑	○	○	○	○	○	●	●	●	○	○	○	○	○						●					●	○																						

## Specification text

### # 1 341200

**SAG Compact Class** latchlock for interior narrow stile doors, with reversible latchbolt for right and left handed doors, latch throw 12mm, 8mm (7/,5/9/10) follower, **fixed in ball bearing**, 24 x 3 mm forend, zinc-plated

Available finishes of forend: zinc-plated / stainless steel satin, latch nickel-plated

Available extra features:

- latch projection: 5 mm, other measures on demand
- snib holding function from 30 mm backset on
- elf tightening follower

#### Classification according to DIN EN 12209

3 S 5 0 0 C - B 0 2 0

### # 1 841200

**SAG Compact Class** latchlock for interior narrow stile doors, for profile cylinder, with reversible latchbolt for right and left handed doors, latch throw 12mm, 24 x 3 mm forend, zinc-plated,

Available finishes of forend: zinc-plated / stainless steel satin, latch nickel-plated

Available extra features:

- latch projection: 5 mm, other measures on demand
- snib holding function from 30 mm backset on

#### Classification according to DIN EN 12209

3 S 5 0 0 C - B 0 0 0

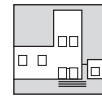




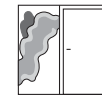
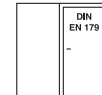
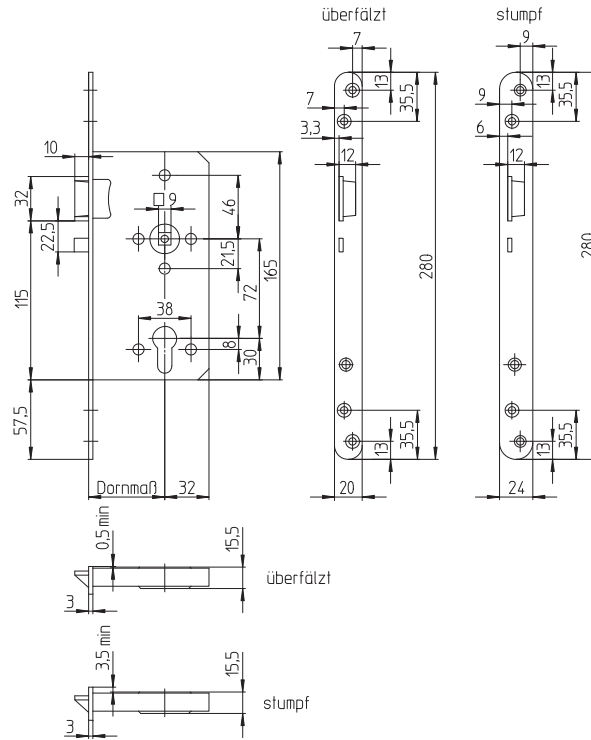
**4.**  
**Lockcases for  
emergency exit  
and anti-panic doors**




# Lockcases for emergency exits according to DIN EN 179 with classroom-function



## # 1 7476SK



 **SAG classroom lockcase, for Euro profile cylinder, for single class room doors, with integrated mechanical access control mode and classroom-function**

## # 174760K

 as above, but with DIN-forend 235 mm length

Note: Please see item # 19476SP for fire-rated doors according to DIN 18250

#		Backset						Executions of forends						Follower									
		55	60	65	70	80	100	rebated door		flat door			stainless		steel		brass			8	9	10	
								18	20				24	satin	zinc	lacq.	satin	pol.					
	1 7476SK	●	○	○	○	○	○		●			●	○	●							●		
	1 74760K	●	○	○	○	○	○		●			●	○	●							●		
	1 7576SK	●	○	○	○	○	○			●		●	○	●							●		
	1 75760K	●	○	○	○	○	○			●		●	○	●							●		

# **17476SK**

SAG classroom lockcase, for classroom doors, with integrated mechanical access control mode for single emergency exits according to DIN EN 179 with classroom-function, Measurement and specification according to DIN 18251-1, permanent function suitability 200.000 operations according to DIN EN 179, prepared for Euro profile cylinder, 72 mm distance, 55 mm (60 / 65 / 70 / 80) backset, **9 mm split-follower**, fixed in bearing, special forend 20 x 3 x 280 mm rounded, stainless steel satin, for rebated doors, incl. 4 offset drilling holes for a solid fastening by use of DIN ISO 7050 screws / 4,8 x 50 mm, metal latchbolt, nickel-plated, with **5 kN side force on latch** – in accordance to DIN 18251-1, class 4, anti-thrust latchbolt, nickel-plated, as additional locking-point with **2 kN side force on anti-thrust latch**, equates to deadbolt force according to DIN 18251-1, class 3, closed lockcase, zinc-plated, with self-securing screws,  
 - emergency function as standard for doors opening outwards  
 - emergency function as special version for doors opening inwards

# **17576SK**

SAG classroom lockcase, for classroom doors, with integrated mechanical access control mode for single emergency exits according to DIN EN 179 with classroom-function, as above, but with special forend 24 x 3 x 280 mm rounded, for flat doors

# **174760K**


SAG classroom lockcase, for classroom doors, with integrated mechanical access control mode for single emergency exits according to DIN EN 179 with classroom-function, as # 17476SP, but with DIN-forend 20 x 3 x 235 mm rounded, for rebated doors


# **175760K**

SAG classroom lockcase, for classroom doors, with integrated mechanical access control mode for single emergency exits according to DIN EN 179 with classroom-function, as above, but with DIN-forend 24 x 3 x 235 mm rounded, for flat doors

Information for door directions:

- Left outwards = Code M
- Left inwards = Code N
- Right outwards = Code S
- Right inwards = Code T

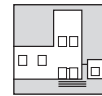
	Schulte-Schlagbaum AG Postfach 10 12 40 42512 Velbert
0432 - BPR - 0058	<b>2010</b>
EN 179: 2008	<b>3 7 6 A 1 3 4 2 A B</b>

	Schulte-Schlagbaum AG Postfach 10 12 40 42512 Velbert
0432 - BPR - 0058	<b>2010</b>
EN 179: 2008	<b>3 7 6 A 1 3 4 2 A D</b>

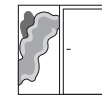
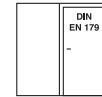
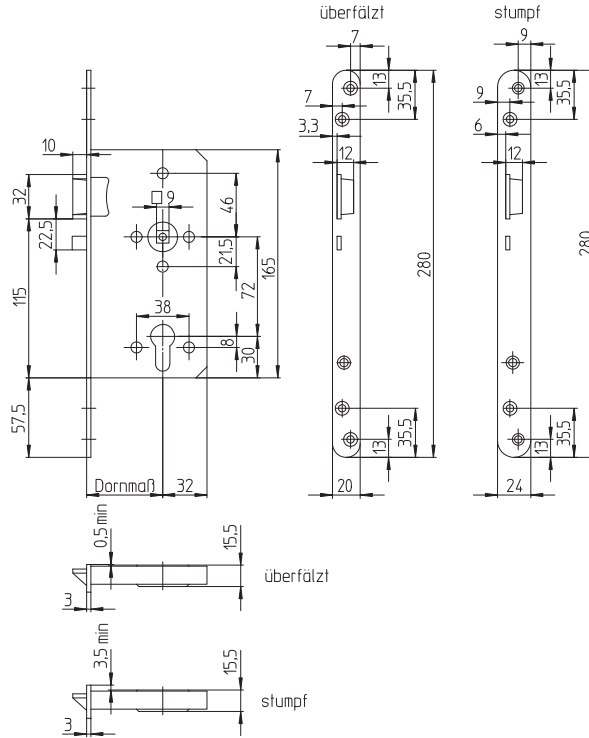




# Lockcases for emergency exits according to DIN EN 179 with classroom-function



## # 1 9476SP



**Key icon:** SAG classroom lockcase, for Euro profile cylinder, for single class room doors, with integrated mechanical access control mode and classroom-function as fire-rated version, with special forend 280 mm length

## # 1 947600

**Key icon:** as above, but with DIN-forend 235 mm length

#		Backset						Executions of forends						Follower								
		55	60	65	70	80	100	rebated door		flat door			stainless		steel		brass		8	9	10	
								18	20	24	satin		zinc	lacq.	satin	pol.						
1 9476SP				○		○			●			●								●		
1 947600				○		○			●			●								●		
1 9576SP				○		○				●		●								●		
1 957600				○		○				●		●								●		



# 19476SP

SAG classroom lockcase, for classroom doors, with integrated mechanical access control mode for single emergency exits according to DIN EN 179 with classroom-function as fire-rated version incl. certified permission,

Measurement and specification according to DIN 18250, permanent function suitability 200.000 operations according to DIN EN 179, prepared for Euro profile cylinder, 72 mm distance, 65 mm (80) backset,

9 mm split-follower, fixed in bearing, special forend 20 x 3 x 280 mm rounded, stainless steel satin, for rebated doors, incl. 4 offset drilling holes for a solid fastening by use of DIN ISO 7050 screws / 4,8 x 50 mm, metal latchbolt, nickel-plated, with 5 kN side force on latch – in accordance to DIN 18250, class 4, anti-thrust latchbolt, nickel-plated, as additional locking-point with 2 kN side force on anti-thrust latch, equates to deadbolt force according to DIN 18250, class 3, closed lockcase, zinc-plated, with self-securing screws,

- emergency function as standard for doors opening outwards
- emergency function as special version for doors opening inwards

# 19576SP

SAG classroom lockcase, for classroom doors, with integrated mechanical access control mode for single emergency exits according to DIN EN 179 with classroom-function as fire-rated version incl. certified permission,

as above, but with special forend 24 x 3 x 280 mm rounded, for flat doors

# 1947600

SAG classroom lockcase, for classroom doors, with integrated mechanical access control mode for single emergency exits according to DIN EN 179 with classroom-function as fire-rated version incl. certified permission,

as # 19476SP, but with special forend 20 x 3 x 235 mm rounded, for rebated doors

# 1957600

SAG classroom lockcase, for classroom doors, with integrated mechanical access control mode for single emergency exits according to DIN EN 179 with classroom-function as fire-rated version incl. certified permission,

as above, but with special forend 24 x 3 x 235 mm rounded, for flat doors

Information for door directions:

- Left outwards = Code M
- Left inwards = Code N
- Right outwards = Code S
- Right inwards = Code T

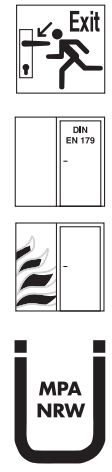
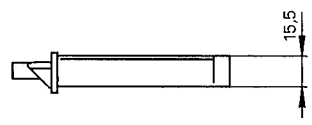
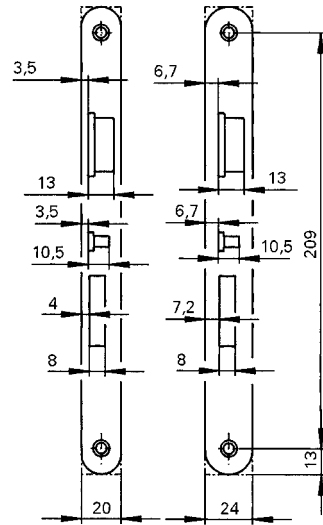
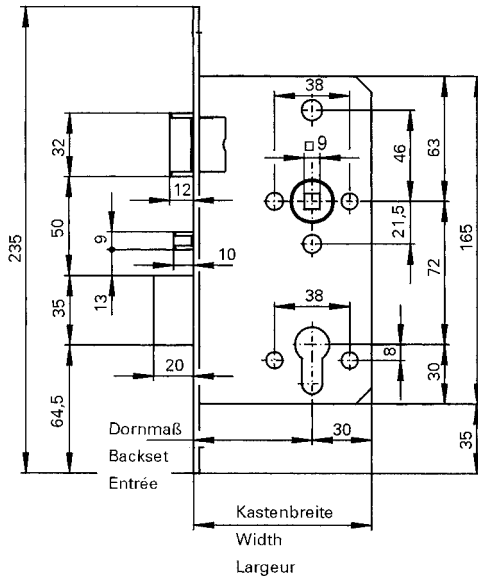
	Schulte-Schlagbaum AG Postfach 10 12 40 42512 Velbert
0432 - BPR - 0058	<b>2010</b>
EN 179: 2008	<b>3 7 6 B 1 3 4 2 A B</b>


	Schulte-Schlagbaum AG Postfach 10 12 40 42512 Velbert
0432 - BPR - 0058	<b>2010</b>
EN 179: 2008	<b>3 7 6 B 1 3 4 2 A D</b>



# Lockcases for single emergency exits according to DIN EN 179 with panic-function

# 1 8355EV  
# 1 8357EV




 SAG lockcase, for Euro profile cylinder, with key action on bolt, with automatic locking function, for emergency exits, with function EV, for single fire-rated doors, same as WILKA-Art. 5495 FS

Approved fittings:

see page 4.14

Striking plates:

see page 1.22

#	Backset				Executions of forends										Follower		
	55	65	80	100	rebated door		flat door	Door shapes		stainless	steel		brass		Follower		
					18	20	24			satin	zinc	lacq.	satin	pol.	8	9	10
 1 8355EV	○	●	○			●		●		●						●	
1 8357EV	○	●	○				●	●		●						●	

### # 1 8355EV

### # 1 8357EV

#### SAG anti-panic mortice lockcase, for Euro-profile

cylinder, requirements to DIN EN 179 (clas. 37601341A), with automatical locking function, and anti-panic function EV, for „1-wing“ fire rated doors, with key action on latchbolt, 72 mm centre distance, 65mm backset, 9 mm follower, 20 mm (24 mm) round forend, stainless steel satin, lockcase zinc-plated, metal latchbolt und deadbolt nickel-plated,

#### Description of anti-panic function EV:

Open from outside, latch- and deadbolt are pushed back with the key. The door is open.

Open from inside with the handle, even if the deadbolt is locked, the door can always be opened.



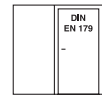
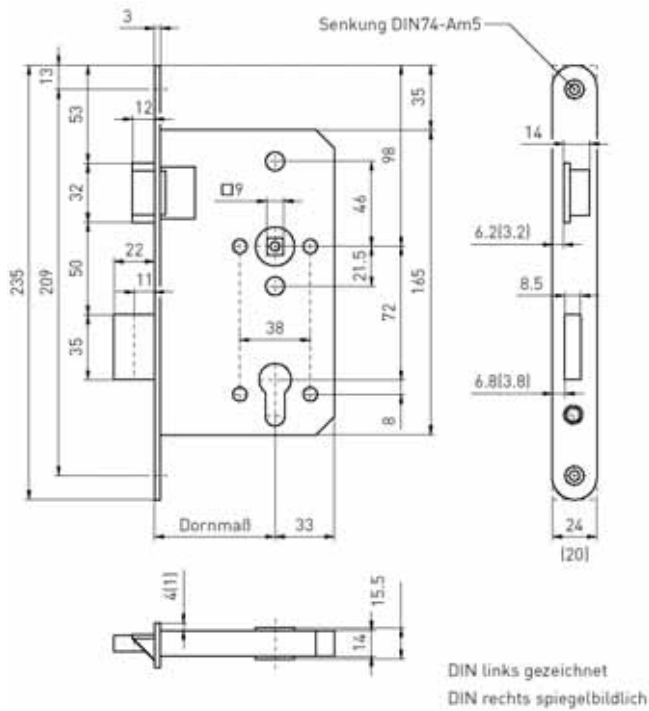
#### With additional features:

for locking medium, which allows an undefined position of the cylinder lever.



# Lockcases for single emergency exits according to DIN EN 179 with panic-function

# 1 8352DV  
# 1 8354DV




 SAG lockcase, for Euro profile cylinder, for emergency exits with function DV, for single fire-rated doors same as BMH-Art. 810

Approved fittings:

see page 4.14

Striking plates:

see page 1.22

#	Backset				Executions of forends										Follower		
	55	65	80	100	rebated door		flat door	DIN		stainless	steel		brass		DIN		
					18	20	24			satin	zinc	lacq.	satin	pol.	8	9	10
 1 8352DV	○	●	○				●	●		●						●	
1 8354DV	○	●	○			●		●		●						●	

# 1 8352DV

# 1 8354DV

**SAG anti-panic mortice lockcase, for Euro-profile cylinder,** requirements to DIN EN 179 (clas. 37601341A), dimensions according to DIN18250, with anti-panic function DV, for „1-wing“ fire rated doors, without key action on latchbolt, 72 mm centre distance, 65 mm (55) backset, 9 mm split-follower, 20mm (24 mm) round forend, stainless steel satin, lockcase zinc-plated, metal latchbolt und deadbolt nickel-plated,

**Description of anti-panic function DV:**

Open from outside, deadbolt is pushed back with the key, latchbolt is pushed back with the outside handle. The door is open.

Open from inside with the handle, even if the deadbolt is locked, the door can always be opened.

(After emergency opening the lock has to be locked again)

**With additional features:**

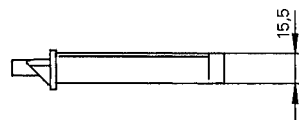
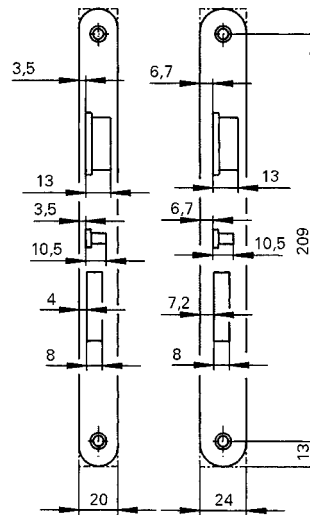
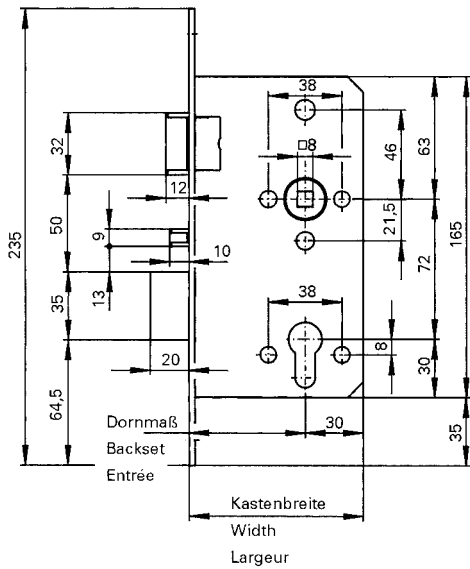
for locking medium, which allows an undefined position of the cylinder lever.






# Lockcases for single emergency exits according to DIN EN 179 with panic-function

# 1 7471EV  
# 1 7571EV






 SAG mortice lockcase for Euro-profile cylinder, for square edged doors, with automatic locking function for emergency exit doors, with panic function EV

same as WILKA-Art. 5495

Striking plates

see page 1.22

#	Backset				Executions of forends										Follower		
	55	65	80	100	rebated door		flat door			stainless	steel		brass				
					18	20	24			sain	zinc	lacq.	matt	pol.	8	9	10
 1 7471EV	●	○	○			●		●		●					●		
1 7571EV	●	○	○				●	●		●					●		

# 1 7471EV

# 1 7571EV

**SAG anti-panic mortice lockcase for Euro-profile cylinder,**  
dimensions acc. to DIN 18251-1, with automatic locking function  
and antipanic function EV, with key action on latchbolt, 72 mm centre  
distance, 55 mm (60 / 65 / 70 / 80 mm) backset, 8 mm follower, 24  
mm round forend, satin stainless steel, lockcase zinc-plated, metal  
latchbolt and deadbolt nickel-plated,

**Description of anti-panic function EV:**

Open from outside, latch- and deadbolt are pushed back with the key.  
The door is open. Open from inside with the handle, even if the  
deadbolt is locked, the door can always be opened.

**With additional features:**

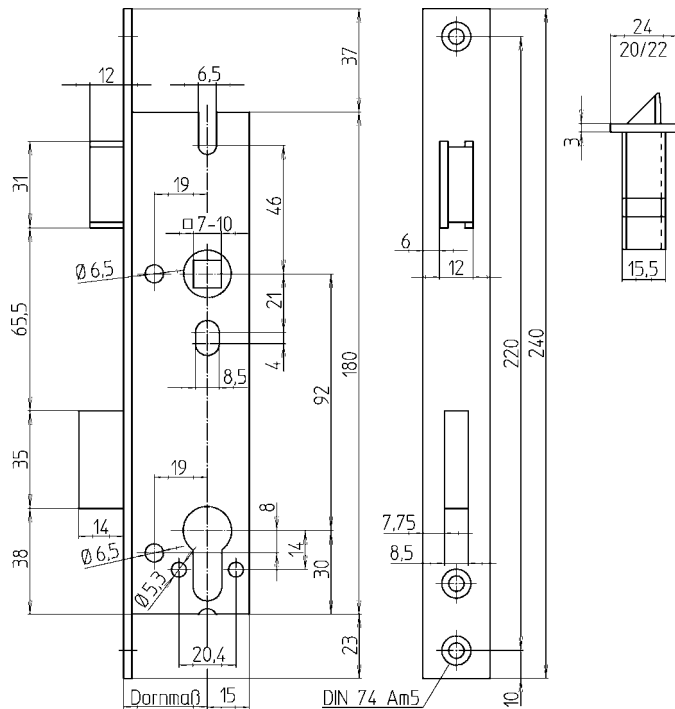
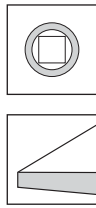
for locking medium, which allows an undefined position of the  
cylinder lever.






# Lockcases for single emergency exits according to DIN EN 179 with panic-function

## # 1 8405EP




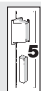




 **SAG Mortice lockcase, for Euro-profile cylinder, with key action on latchbolt, for exit doors, single throw, with function EP**

**Extra feature**

Snib holding function  
Renovation-forend 375x24mm, stainless steel satin

**Further differs**

 **SAG Mortice lockcase, prepared for round cylinder, 94 mm centre distance**

#	Backset											Executions of forends						
	30	33	35	38	40	45	50	60		22x3	24x3	zinc	stainless satin	7	8	8,5	9	10
 <b>1 8405EP</b>	●	○	●	○	●	●	○	○	○	○	●	○	○	●	○	●	○	
 <b>1 8505EP</b>	○	○	○	○	○	○	○	○	○	○	○	○	○	○	●	○	○	

### # 1 8405EP

SAG Mortice lockcase, for Euro-profile cylinder, with key action on latchbolt, for single exit doors, single throw, with function EP, 92 mm centre distance, 8 mm follower, with reversible latch bolt, latch bolt projection 12 mm, dead bolt projection 14 mm, follower, **fixed in bear rings**, steel flat forend zinc plated, (stainless steel), 24 x 3 mm (20/22 mm) lock body zinc plated

Description of SAG emergency function EP:

Open from outside, dead- and latchbolt will be opened with key, door is open.

Open from inside by pushing the handle, also when deadbolt is closed. (After emergency opening the lock has to be locked).



## Approved combination of fitting and lockcases

Fitting for:	DIN EN 179									DIN EN 1125			Outer fittings for panic bars			Kind of door				DIN EN		
	Special fitting VARifree DO 20.51.01/02	ECO 20.01.01/02	FSB DO 20.3.01/02	HEWI DO 20.13.01/02	Hoppe DO 20.05.01/02, DO 20.07.01/02, DO 20.20.01/02	Vielor DO 20.12.01/02	BMH DO 20.23.01	Grundmann DO 20.26.01	Ogro 20.4.01/02	Glutz DO 20.21.02	ECO - Stangengriff - DO 30.03	FSB - Stangengriff - DO 30.09	HEWI - Stangengriff - DO 30.10	Outer fitting ECO DO 20.1	Outer fitting BMH DO 20.23	Outer fitting according to DIN 18273 with compliance certificate	Single-wing door	Double-wing door	Standard door	Narrow style door	DIN EN 179	DIN EN 1125
1 8351DP		●	●	●	●	●	●	●									○		○		○	
1 8351EP		●	●	●	●	●	●	●									○		○		○	
1 8352BP / 1 8354BP		●	●	●	●	●	●	●									○		○		○	
1 8352DP / 1 8354DP		●	●	●	●	●	●	●									○		○		○	
1 8352DV / 1 8354DV	●	●	●	●	●	●	●	●									○		○		○	
1 8352EP / 1 8354EP		●	●	●	●	●	●	●									○		○		○	
1 8355EV / 1 8357EV	●																○		○		○	
1 8362EP / 1 8364EP										●	●	●		●	●		○		○			○
1 8362BP / 1 8364BP										●	●	●		●	●		○		○			○
1 8362DP / 1 8364DP										●	●	●		●	●		○		○			○
1 8415EV / 1 8515EV	●	●	●	●	●	●		●	●	●	●	●	●		●		○			○	○	○
1 8418DV / 1 8518DV	●	●	●	●	●	●		●	●	●	●	●	●		●		○			○	○	○
1 8421BP / 1 8521BP		●	●	●	●	●		●	●	●	●	●	●		●		○			○	○	○
1 8652BP / 1 8654BP		●	●	●	●	●	●	●										○	○		○	
1 8652EP / 1 8654EP		●	●	●	●	●	●	●										○	○		○	
1 8662BP / 1 8664BP										●	●	●		●	●		○	○				○
1 8662EP / 1 8664EP										●	●	●		●	●		○	○				○
1 8721BP / 1 8821BP		●	●	●	●	●		●	●	●	●		●		●		○		○		○	○
1 8725EP / 1 8825EP		●	●	●	●	●		●	●	●	●		●		●		○		○		○	○

### Note:

Special fitting Varifree is only approved for DIN EN 179!

### Legend:

- tested and certified combination
- applicable for marked purpose of use

Status: 01.10.2010

### Legend DO-Number:

- ...01 - mortise locks for residential doors
- ...02 - narrow stile lockcases



## Annex

The following information is to be complied with in accordance with the manufacturer's liability for his products as defined in the product liability law.

Failure of such compliance releases us from this liability requirement.

### 1. Product information and proper use

A lock usually has the function of closing and blocking a door. Some simple lock constructions only serve to close - they are also referred to as closures. Closing refers to keeping a door shut such that it cannot be opened by means of tension and pressure, but can, on the other hand, be opened in a simple fashion, such as by means of a handle.

Blocking refers to securing a closed door by means of a rigid, non-spring-mounted bolt that is pushed out from the door lock and catches in the corresponding recesses in the frame or in the striking plate opening. It must always be possible to lock the bolt without counterpressure or lateral pressure.

The bolt must be fixable in its end position and in addition it must be difficult to open the door without the matching locking device.

The latch bolt serves to close the door.

The bolt assumes the blocking function. The bolt is moved with the corresponding linkage. The locking mechanism (tumbler with anchoring device) has the function of holding the door in a certain position. The door may be blocked only in a previously closed position (also applies to hooked latches, quarter-turn pawl latches). Again it must always be possible to lock the bolt without counterpressure or lateral pressure.

Cylinder fixing screws: are to be matched or adapted to the pin length.

A mortise lock is a lock that is placed and screwed into an existing recess (lock rabbet) in the door leaf and is usually based on hinged doors.

Ensuring proper use also means employment of the correct combination with permissible hardware and locking devices (e.g. keys, cylinders) as well as accessories (e.g. striking plate) during installation according to the mounting instructions and/or in accordance with harmonized DIN standards, including maintenance. Locks for doors with special functions must be selected according to the regulations and, if necessary, additionally identified.

In the case of panic locks in escape routes, operation of the latch must not take place at the same time as the blocking or unlocking action. These locks are designed for emergency function with a low operation frequency in cases of emergency. The normally desired blocking action (i.e. single-turn or double-turn by means of a key) or unlocking must not be replaced by constant actuation of the emergency function.

Locking cylinders can be mounted in locks without reservations only if these locking cylinders are subject to a dimensional standard (DIN 18 252) and such locks are expressly designed for locking cylinders according to this standard.

In all other cases, the manufacturer, dealer, processor or consumer of such locks must make sure that the locking cylinder selected is suitable for installation and for the intended use. Imperative legal regulations must be complied with. For example, locking cylinders with a knob or similar handle part must not be mounted in panic locks.

To the extent that they are not explained in catalogue sections and illustrations, general terms are defined in DIN 18 250, DIN 18 251, DIN 18 252 and in the hardware standards. Deviations from the standard are to be indicated when ordering.

### 2. Incorrect use

Incorrect use, i.e. improper use of the product, of locks includes the following cases:

- if flawless use is prevented by the insertion of foreign or improper objects into the lock or into the striking plate.
- if the lock or striking plate is manipulated or affected in such a way that a change in structure, mode of operation or function results.
- if the lock bolt is improperly used to keep the door open.
- if the closure elements are mounted or subsequently treated, e.g. painted over, so as to hinder proper function.
- if improper loads that exceed the normal manual force are applied to the handle connection.
- if non-matching locking devices, e.g. of a deviating size or incorrectly adjusted, are used.
- if an expansion or reduction of the necessary door gap results from readjustment of the hinges or lowering of the door.
- if a double-wing door which is not approved for this purpose is opened via the standing door.
- if there is grabbing between the door leaf and the frame when the door is closed. - if the handle and the locking mechanism are operated at the same time.

### 3. Product performance

If the product performance is not specifically defined in our catalogues, brochures, specifications, etc., the requirements with respect to the individual locks must be agreed upon with us.

The guidelines in this connection include the DIN 18 250, DIN 18 251, DIN 18 252, DIN 18 257 and DIN 18 258 standards as well as the hardware standard. The basic requirements and supplementary requirements regarding locks are defined in these standards.

The suitability for use of the locks depends, inter alia, on frequency of operation, mode of operation, environmental influences and care.

The lock, cylinder and locking device are to be replaced as soon as malfunctions occur, particularly when inserting or removing the key, despite proper maintenance.

### 4. Product maintenance

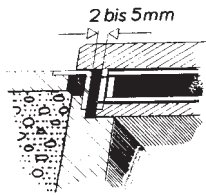
Locks must be lubricated with a suitable lubricant at least once a year - or even more frequently, depending on stress. Proper function of, for example, the lock, locking device, hardware and striking plate is to be checked and ensured in this connection.

Only cleaning agents that contain no corrosion-promoting substances may be used.

### 5. Requirements regarding information and instructions

To meet the information and instruction requirements according to the product liability law, specialized dealers, key cutting services, architects, planners, processors and users have the following documentation and services at their disposal on request.

- catalogues, brochures
  - texts of invitations for tenders, bid documents, locking plans
  - DIN 18 250, DIN 18 251, DIN 18 252, DIN 18 257 DIN 18 258 (exclusive sale through Beuth Verlag GmbH, Berlin 30)
  - instructions for installation, operation and care
- Concerning selection of locks as well as installation, operation and care,
- architects and planners are required to request and comply with all necessary product information from us.
  - specialized dealers are required to comply with the product information and instructions in the price lists and, in particular, to request all necessary instructions from us and pass them on to the processors.
  - processors are required to comply with all product information and, in particular, to request operating and care instructions from us and pass them on to the ordering customers and users.



Für Schlösser, die der DIN 18251 unterliegen ist die Fräsung der Schloßtaschen der DIN 18251 in Bild 6 festgelegt. Bei dieser Fräsung ist gewährleistet, daß die Schlösser ohne Probleme eingebaut werden können.

Bei Schlössern, die nicht der DIN 18251 unterliegen, ist darauf zu achten, daß das Schloß spannungsfrei montiert wird.

Nach erfolgreichem Einbau ist sicherzustellen, daß die Schließfunktion im Zusammenwirken von Schloß, Schließmittel und Schließblech einwandfrei gegeben ist.

For lockcase produced in accordance with DIN 18251 please see picture 6 of DIN 18251 showing a correctly shaped lockcase mortise.

A mortise of these dimensions will ensure trouble free installation of the relevant lockcase.

Please ensure that lockcases which are not produced in accordance with DIN 18251 are installed without distortion.

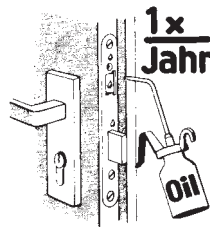
After installation the locking function must be checked including the striking plate and e.g. the cylinder for trouble free operation.

Pour les boîtiers de serrures fabriqués selon la norme DIN 18251, voir la photo 6 de la norme DIN qui montre une mortaise correcte pour serrure à mortaiser.

Une mortaise à ces dimensions procurera un bon fonctionnement du boîtier de serrure correspondant.

Assurez-vous que les boîtiers de serrures qui ne sont pas conformes à la norme DIN 18251 sont montés sans forcer.

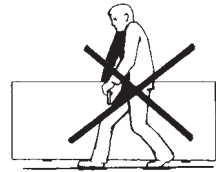
Après montage, vérifiez le bon fonctionnement des pènes dans la gâche ainsi que par exemple celui du cylindre.



Schlösser sind mindestens 1 x jährlich zu schmieren (nicht harzendes Öl).

Locks have to be greased at least once per year (not resin oil).

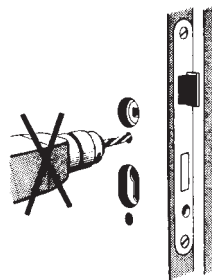
Il faut traiter les serrures au moins une fois par an avec des lubrifiants (lubrifiant exempt de résine).



Das Türblatt soll nicht am Drücker getragen werden.

Don't use handle for carrying the door.

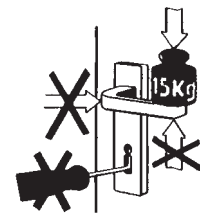
Ne jamais porter le vantail de porte par les béquilles.



Das Türblatt darf im Schloßbereich nicht bei eingebautem Schloß durchbohrt werden.

No drilling through the lock while it is installed.

Ne jamais percer le vantail de porte dans la zone où se trouve montée la serrure.

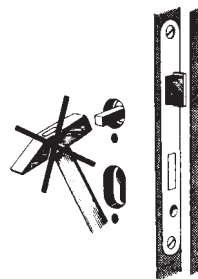


Der Drücker darf nur im normalen Drehsinn belastet werden. In Betätigungsrichtung darf auf den Drücker maximal nur eine Kraft von 150 N aufgebracht werden.

Das Schloß darf nur mit zugehörigem Schlüssel (und nicht mit artfremden Gegenständen) geschlossen werden.

No pressure must be applied to handle against its operating direction. In operating direction the pressure must not exceed a maximum of 150 N.

The lock must only be operated with the appropriate key. Don't apply any other tools!



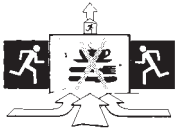
Der Drückerstift darf nicht mit Gewalt durch die Schloßnuß geschlagen werden.

The handle must not be forced into the clip follower.

Ne jamais introduire de force la tige dans le fouillot de la carrée serrure.

La béquille ne doit être chargée que dans la direction normale de mouvement. La force maximale admissible à appliquer à la béquille dans la direction d'actionnement est de 150 N.

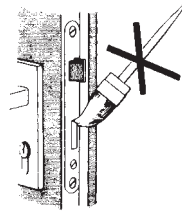
La serrure ne doit être fermée que par sa propre clé et non pas par d'autres objets.



Die Betätigung des Panikdrückers darf nur im besonderen Gefahrenfall (nicht im Dauerbetrieb erfolgen).

Use panic handle in case of emergency only.

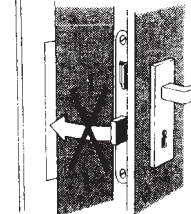
L'actionnement de la béquille de panique est restreint au cas d'urgence (et non pas pour fonctionnement continu).



Schloßriegel und -falle dürfen nicht überstrichen/-lackiert werden.

Dead bolt and latch bolt are not to be varnished.

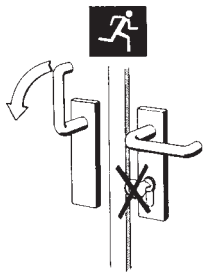
Ne pas passer de couche de peinture sur pêne dormant et pêne demi-tour.



Der Schloßriegel darf nicht bei offener Tür vorgeschlossen sein.

Lock dead bolt only when door is shut.

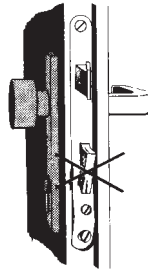
Le pêne dormant ne doit pas être sorti de la serrure lors porte ouverte.



Bei Anti-Panik-Schlössern darf kein Schlüssel im Schloß stecken bleiben.

Keys must not be left in the locks of anti-panic doors.

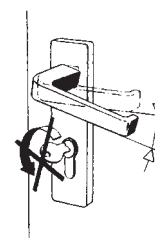
Ne jamais laisser la clé introduite dans une serrure Anti-Panique.



Sobald Spuren von Gewaltanwendung sichtbar sind, muß das Schloß ersetzt werden.

The lock has to be exchanged as soon as signs of force become visible.

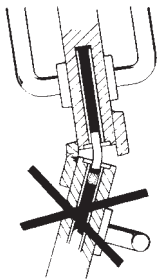
Il faut remplacer la serrure aussitôt que des traces d'un emploi de force sont visibles.



Drücker und Schlüssel dürfen nicht gleichzeitig betätigt werden.

Handle and key must not be operated at the same time.

Ne jamais actionner béquille et clé en même temps.



Zweiflügelige Türen dürfen nicht über den Standflügel aufgezwungen werden.

Double doors must not be forced open by using the inactive leaf.

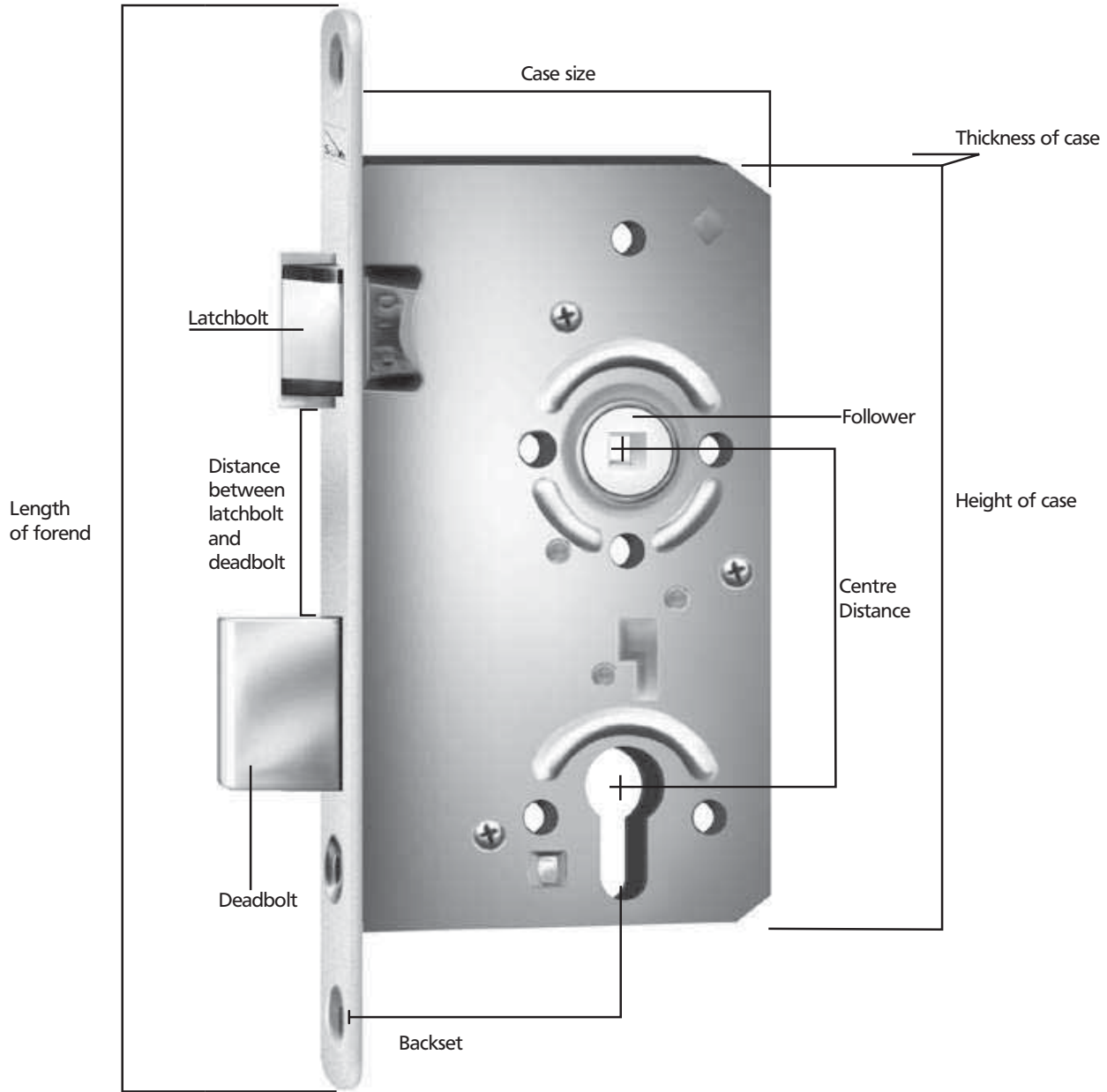
Il ne faut pas ouvrir des portes à deux vantaux en employant de la force au vantail fixe.

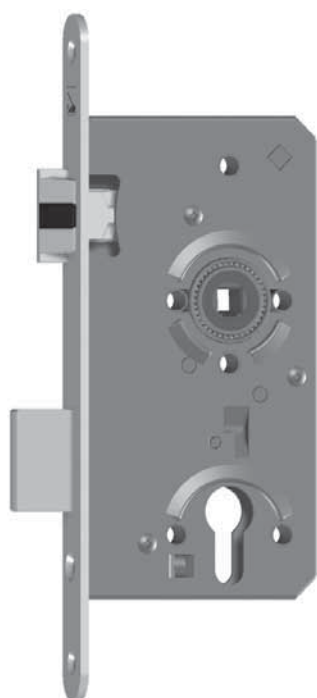






# Lock measurement





#	<b>1 7495W0 / 1 7595W0</b>	<b>1 415900 / 1 416900</b>
Variation name	SAG Authority-Lockcase for euro-profile cylinder	SAG Authority-Lockcase as bathroom version
Backset	55, 60, 65, 70, 80 mm	55, 60, 65, 70, 80 mm
Forend dimensions	20 / 24 x 3 x 235 mm, squared / rounded	20 / 24 x 3 x 235 mm, squared / rounded
Modes of closing	For euro-profile cylinder with key action on bolt double throw 72 mm center distance	bathroom lockcase single throw 78 mm center distance

Classification # 1 7495W0 / 1 7595W0 (for euro-profile cylinder)										
1	2	3	4	5	6	7	8	9	10	11
Category of use	Durability and load on latch bolt	Door measurement and closing force	Suitability for use on fire / smoke doors	Safety	Corrosion resistance and temperature	Security and drill resistance	Field of door application	Type of key operation and locking	Type of spindle operation	Key identification
3	S	5	0	0	C	6	B	C	2	0

Classification # 1 415900 / 1 416900 (bathroom version)										
1	2	3	4	5	6	7	8	9	10	11
Category of use	Durability and load on latch bolt	Door measurement and closing force	Suitability for use on fire / smoke doors	Safety	Corrosion resistance and temperature	Security and drill resistance	Field of door application	Type of key operation and locking	Type of spindle operation	Key identification
3	S	5	0	0	C	3	B	G	2	0



## Classification in accordance to DIN EN 12209:2003

For utilization of DIN EN 12209 mechanical lockcases have to be classified according to the 11-digit classification-code.  
Striking plates, to be sold separately from the corresponding lockcase, may be classified with the same classification-code, but only with classes for these categories, relevant for the striking plates.

**X** - 200.000 test cycles, 120 N load on latch bolt  
**W** - 100.000 test cycles, 120 N load on latch bolt  
**S** - 200.000 test cycles, 50 N load on latch bolt  
**R** - 100.000 test cycles, 50 N load on latch bolt  
**M** - 200.000 test cycles, 25 N load on latch bolt  
**L** - 100.000 test cycles, 25 N load on latch bolt  
**H** - 200.000 test cycles, 10 N load on latch bolt  
**G** - 100.000 test cycles, 10 N load on latch bolt  
**F** - 50.000 test cycles, 10 N load on latch bolt  
**C** - 200.000 test cycles, no load on latch bolt  
**B** - 100.000 test cycles, no load on latch bolt  
**A** - 50.000 test cycles, no load on latch bolt

very high corrosion resistance, temperature requirement from -20 °C to +80 °C - **G**  
 high corrosion resistance, temperature requirement from -20 °C to +80 °C - **F**  
 moderate corrosion resistance, temperature requirement from -20 °C to +80 °C - **E**  
 very high corrosion resistance, no temperature requirement - **D**  
 high corrosion resistance, no temperature requirement - **C**  
 moderate corrosion resistance, no temperature requirement - **B**  
 low corrosion resistance, no temperature requirement - **A**  
 no defined corrosion resistance, no temperature requirement - **0**

1. position	2. position	3. position	4. position	5. position	6. position
Category of use	Durability and load on latch bolt	Door measurement and closing force	Suitability for use on fire / smoke doors	Safety	Corrosion resistance and temperature
<b>3</b>	<b>S</b>	<b>5</b>	<b>0</b>	<b>0</b>	<b>C</b>

1 - Class 1: e.g. residential doors  
 2 - Class 2: e.g. office doors  
 3 - Class 3: e.g. doors in public buildings

0 - not approved  
 1 - approved

no safety requirements - **0**

up to 100 kg door measure, 50 N maximum closing force - **1**  
 up to 200 kg door measure, 50 N maximum closing force - **2**  
 above 200 kg door measure, 50 N maximum closing force - **3**  
 up to 100 kg door measure, 25 N maximum closing force - **4**  
 up to 200 kg door measure, 25 N maximum closing force - **5**  
 above 200 kg door measure, 25 N maximum closing force - **6**  
 up to 100 kg door measure, 15 N maximum closing force - **7**  
 up to 200 kg door measure, 15 N maximum closing force - **8**  
 above 200 kg door measure, 15 N maximum closing force - **9**

minimum eight detaining elements, extended number of effective differs - **H**  
 minimum seven detaining elements, extended number of effective differs - **G**  
 minimum seven detaining elements - **F**  
 minimum six detaining elements, extended number of effective differs - **E**  
 minimum six detaining elements - **D**  
 minimum five detaining elements, extended number of effective differs - **C**  
 minimum five detaining elements - **B**  
 minimum three detaining elements - **A**  
 no requirements - **0**

lock or latch for heavy duty unsprung lever handle operation specified by the manufacturer - **4**  
 lock or latch for heavy duty unsprung lever handle operation - **3**  
 lock or latch for unsprung lever handle operation - **2**  
 lock or latch for knob or sprung lever handle operation - **1**  
 lock or latch without follower - **0**

**7** - very high security with drill resistance  
**6** - very high security and no drill resistance  
**5** - high security with drill resistance  
**4** - high security and no drill resistance  
**3** - medium security and no drill resistance  
**2** - low security and no drill resistance  
**1** - minimum security and no drill resistance

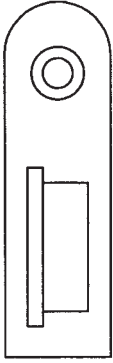
7. position	8. position	9. position	10. position	11. position
Security and drill resistance	Field of door application	Type of key operation and locking	Type of spindle operation	Key identification
<b>3</b>	<b>B</b>	<b>A</b>	<b>0</b>	<b>0</b>

mortice lock, unrestricted application - **A**  
 mortice lock, highed door - **B**  
 mortice lock, sliding door - **C**  
 rim lock, unrestricted application - **D**  
 rim lock, hinged door - **E**  
 rim lock, sliding door - **F**  
 mortice lock, hinged door, supported - **H**  
 rim lock, hinged door, inwards - **J**  
 mortice lock, hinged door, locked from inside - **K**  
 mortice lock, sliding door, locked from inside - **L**  
 rim lock, hinged door, locked from inside - **M**  
 rim lock, sliding door, locked from inside - **N**  
 mortice lock, hinged door, supported, locked from inside - **P**  
 rim lock, hinged door, inwards, locked from inside - **R**  
 mortice lock, unrestricted application, locked from inside - **S**  
 rim lock, unrestricted application, locked from inside - **T**

**0** - not applicable  
**A** - cylinder lock or latch, manually locking  
**B** - cylinder lock or latch, automatically locking  
**C** - cylinder lock or latch, manually locking with intermediate locking  
**D** - lever lock or latch, manually locking  
**E** - lever lock or latch, automatically locking  
**F** - lever lock or latch, manually locking with intermediate locking  
**G** - lock or latch without key operation, manually locking  
**H** - lock without key operation, automatically locking



# Changing of reversible latchbolt

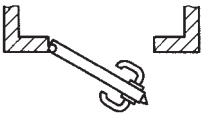


DIN L

(left outwards)



inside

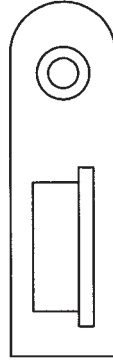
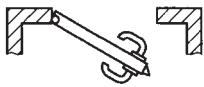


DIN L

(left inwards)



inside

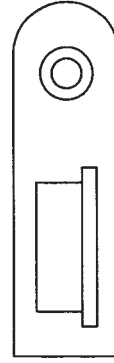
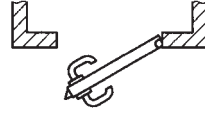


DIN R

(right outwards)



inside



DIN R

(right inwards)



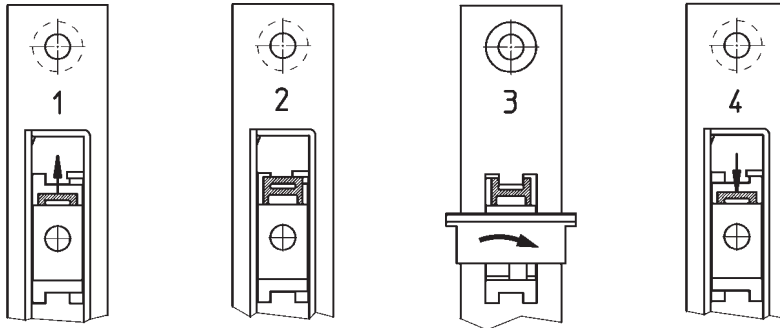
inside



## Changing of reversible latchbolt

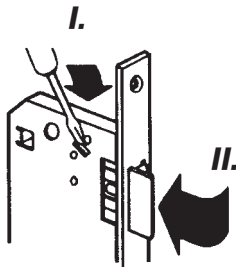


**Reversible latchbolt # 1 7585W0, 1 7586W0, 1 7586FW, 1 341200, 1 8401W0, 1 8405EP, 1 8405W0, 1 8407W0, 1 841200, 1 8419W0, 1 8501W0, 1 8505EP, 1 8505W0, 1 8507W0, 1 851200, 1 8519W0**

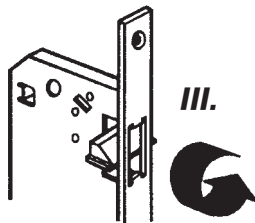


**Reversible latchbolt # 1 7588W0, 1 7688W0, 1 418800, 1 428800, 1 7588FW, 1 7688FW**

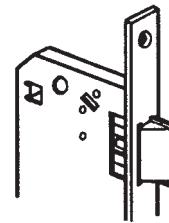
①



②



③





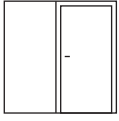
# Index of item numbers

#	page	#	page	#	page
<b>Part 1</b>					
<b>Lockcases and striking plates for residential doors</b>					
# 1 101010	1.14	# 1 7565WK	1.9	# 1 7586FW	2.17
# 1 101040	1.15	# 1 7585W0	1.12	# 1 7586W0	2.16
# 1 10106W	1.15	# 1 7585WK	1.13	# 1 7595W0	2.3
# 1 10107W	1.15	# 1 7588FW	1.11	# 1 7688FW	2.10
# 1 206000	1.2	# 1 7588R0	1.11	# 1 7688R0	2.11
# 1 246000	1.4	# 1 7588W0	1.10	# 1 7688W0	2.11
# 1 24600K	1.5	# 1 SK2480	1.22	# 1 8352W0	2.19
# 1 2460FK	1.5	# 1 SK2490	1.22	# 1 8354W0	2.18
# 1 246400	1.7	# 1 WB2460	1.24	# 1 8356W0	2.21
# 1 24640K	1.7	# 1 WB2491	1.24	# 1 8358W0	2.20
# 1 246500*	1.9	# 1 WB2492	1.24	# 1 9300W0	2.4
# 1 24650K	1.9	<b>Part 2</b>			
# 1 256000	1.5	<b>Lockcases for heavy duty doors</b>			
# 1 25600K	1.5	# 1 246700*	2.9	<b>Part 3</b>	
# 1 2560FK	1.5	# 1 24670K*	2.9	<b>Lockcases for narrow stile doors</b>	
# 1 256400	1.7	# 1 256700*	2.9	# 1 341200 .....	3.10
# 1 25640K	1.7	# 1 25670K*	2.9	# 1 8405W0 .....	3.8
# 1 256500*	1.9	# 1 411700*	2.9	# 1 8407W0 .....	3.2
# 1 25650K	1.9	# 1 41170K*	2.9	# 1 841000 .....	3.4
# 1 258800	1.11	# 1 411800*	2.7	# 1 841200 .....	3.10
# 1 413000	1.3	# 1 41180K*	2.7	# 1 8419W0 .....	3.6
# 1 413200	1.7	# 1 412700*	2.9	# 1 8505W0* .....	3.9
# 1 41320K	1.7	# 1 41270K*	2.9	# 1 8507W0* .....	3.3
# 1 413300*	1.9	# 1 412800*	2.7	# 1 851000 .....	3.5
# 1 41330K*	1.9	# 1 41280K*	2.7	# 1 8519W0 .....	3.7
# 1 413600	1.5	# 1 4138NT*	2.23	<b>Part 4</b>	
# 1 41360K	1.5	# 1 4148NT*	2.23	<b>Lockcases for emergency doors</b>	
# 1 4136R0	1.5	# 1 415900*	2.3	# 1 7471EV	4.10
# 1 414100	1.17	# 1 416900*	2.3	# 1 7476SK	4.2
# 1 414200	1.7	# 1 428800	2.11	# 1 7571EV	4.10
# 1 41420K	1.7	# 1 7467W0	2.8	# 1 8352DV	4.8
# 1 414300*	1.9	# 1 7467WK	2.9	# 1 8354DV	4.8
# 1 41430K*	1.9	# 1 7468NT	2.22	# 1 8355EV	4.6
# 1 414600	1.5	# 1 7470FK	2.13	# 1 8357EV	4.6
# 1 41460K	1.5	# 1 7470WK	2.12	# 1 8405EP	4.12
# 1 4146R0	1.5	# 1 7473FW	2.15	# 1 8505EP	4.12
# 1 417200*	1.3	# 1 7470WK	2.12	# 1 9476SP	4.4
# 1 418800	1.11	# 1 7473FW	2.15	# 174760K	4.3
# 1 714300	1.16	# 1 7480W0	2.6	# 175760K	4.3
# 1 717800	1.20	# 1 7480WK	2.7	# 17576SK	4.3
# 1 7464W0	1.6	# 1 7495W0	2.2	# 1947600	4.5
# 1 7464WK	1.7	# 1 7567W0	2.9	# 1957600	4.5
# 1 7465W0	1.8	# 1 7567WK	2.9	# 19576SP	4.5
# 1 7465WK	1.9	# 1 7568NT	2.23		
# 1 7564W0	1.7	# 1 7570FK	2.13		
# 1 7564WK	1.7	# 1 7570WK	2.13		
# 1 7565W0	1.9	# 1 7573FW	2.15		
		# 1 7573W0	2.14		
		# 1 7580W0	2.7		
		# 1 7580WK	2.7		

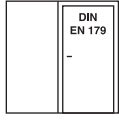
#	page	#	page	#	Seite
<b>Index of item numbers according to continuing item numbers</b>					
# 1 101010	1.14	# 1 41430K*	1.9	# 1 7688R0	2.11
# 1 101040	1.15	# 1 414600	1.5	# 1 7688W0	2.11
# 1 10106W	1.15	# 1 41460K	1.5	# 1 8352DV	4.8
# 1 10107W	1.15	# 1 4146R0	1.5	# 1 8352W0	2.19
# 1 206000	1.2	# 1 4148NT*	2.23	# 1 8354DV	4.8
# 1 246000	1.4	# 1 415900*	2.3	# 1 8354W0	2.18
# 1 24600K	1.5	# 1 416900*	2.3	# 1 8355EV	4.6
# 1 2460FK	1.5	# 1 417200*	1.3	# 1 8356W0	2.21
# 1 246400	1.7	# 1 418800	1.11	# 1 8357EV	4.6
# 1 24640K	1.7	# 1 428800	2.11	# 1 8358W0	2.20
# 1 246500*	1.9	# 1 714300	1.16	# 1 8405EP	4.12
# 1 24650K	1.9	# 1 717800	1.20	# 1 8405W0	3.8
# 1 246700*	2.9	# 1 7464W0	1.6	# 1 8407W0	3.2
# 1 24670K*	2.9	# 1 7464WK	1.7	# 1 841000	3.4
# 1 256000	1.5	# 1 7465W0	1.8	# 1 841200	3.10
# 1 25600K	1.5	# 1 7465WK	1.9	# 1 8419W0	3.6
# 1 2560FK	1.5	# 1 7467W0	2.8	# 1 8505EP	4.12
# 1 256400	1.7	# 1 7467WK	2.9	# 1 8505W0*	3.9
# 1 25640K	1.7	# 1 7468NT	2.22	# 1 8507W0*	3.3
# 1 256500*	1.9	# 1 7470FK	2.13	# 1 851000	3.5
# 1 25650K	1.9	# 1 7470WK	2.12	# 1 8519W0	3.7
# 1 256700*	2.9	# 1 7471EV	4.10	# 1 9300W0	2.4
# 1 25670K*	2.9	# 1 7473FW	2.15	# 1 9300WK	2.5
# 1 258800	1.11	# 1 7476SK	4.2	# 1 9476SP	4.4
# 1 341200	3.10	# 1 7480W0	2.6	# 1 9500W0	2.5
# 1 411700*	2.9	# 1 7480WK	2.7	# 1 9500WK	2.5
# 1 41170K*	2.9	# 1 7495W0	2.2	# 1 SK2480	1.22
# 1 411800*	2.7	# 1 7564W0	1.7	# 1 SK2490	1.22
# 1 41180K*	2.7	# 1 7564WK	1.7	# 1 WB2460	1.24
# 1 412700*	2.9	# 1 7565W0	1.9	# 1 WB2491	1.24
# 1 41270K*	2.9	# 1 7565WK	1.9	# 1 WB2492	1.24
# 1 412800*	2.7	# 1 7567W0	2.9	# 174760K	4.3
# 1 41280K*	2.7	# 1 7567WK	2.9	# 175760K	4.3
# 1 413000	1.3	# 1 7568NT	2.23	# 175765K	4.3
# 1 413200	1.7	# 1 7570FK	2.13	# 1947600	4.5
# 1 41320K	1.7	# 1 7570WK	2.13	# 1957600	4.5
# 1 413300*	1.9	# 1 7571EV	4.10	# 195765P	4.5
# 1 41330K*	1.9	# 1 7573FW	2.15		
# 1 413600	1.5	# 1 7573W0	2.14		
# 1 41360K	1.5	# 1 7580W0	2.7		
# 1 4136R0	1.5	# 1 7580WK	2.7		
# 1 4138NT*	2.23	# 1 7585W0	1.12		
# 1 414100	1.17	# 1 7585WK	1.13		
# 1 414200	1.7	# 1 7586FW	2.17		
# 1 41420K	1.7	# 1 7586W0	2.16		
# 1 414300*	1.9	# 1 7588FW	1.11		
		# 1 7588R0	1.11		
		# 1 7588W0	1.10		
		# 1 7595W0	2.3		
		# 1 7688FW	2.10		



## Doors



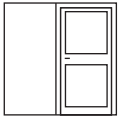
Single-leaf security doors



Single-leaf security doors in accordance to DIN EN 179



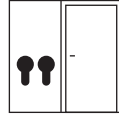
Fire protecting doors



Single-leaf narrow stile doors



Narrow stile fire protecting doors in accordance to DIN EN 179



Security doors with two different closing permissions

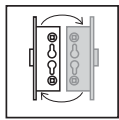


Exit doors with high safety requirements



Emergency exit doors

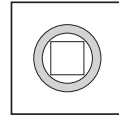
## Other



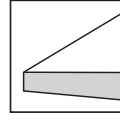
Suitable for right or left handed doors



MPA-supervised products



Follower bearing



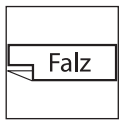
Latchbolt skewness on the backside



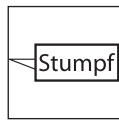
Euro-profile cylinder



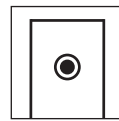
Round cylinder



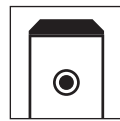
Rebated door



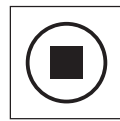
Flat door



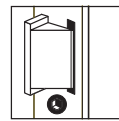
Squared forend



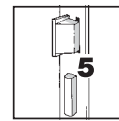
Rounded forend



Follower

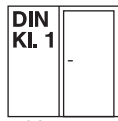


Snib holding function



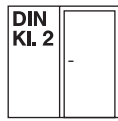
Latch- and deadbolt projection

**Doors**



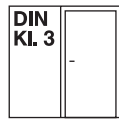
< 20 kg/m<sup>2</sup>

Interior doors  
(Class 1)



20-25 kg/m<sup>2</sup>

Interior doors  
(Class 2)



25-30 kg/m<sup>2</sup>

Interior and  
ending doors  
(Class 3)



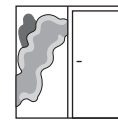
> 30 kg/m<sup>2</sup>

Functional and  
ending doors  
(Class 4)

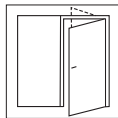


> 30 kg/m<sup>2</sup>

Interior doors  
(Class 5)



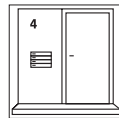
Smoke protecting  
doors



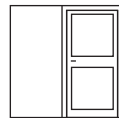
Swing doors



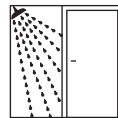
Fire protecting  
doors



Front doors



Single-leaf  
narrow stile doors



Wet room doors



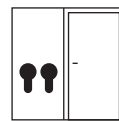
Ending doors with  
high safety  
requirements



Burglary resistant  
elements WK2  
(DIN Cl. 5)



Burglary resistant  
elements WK1  
(DIN Cl. 5)



Security doors with  
two different closing  
permissions

**Applications**



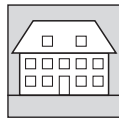
Industrial and  
administrative  
buildings



Hotels and  
residential accom-  
modation



Clinics and  
hospitals



Condominium Projects

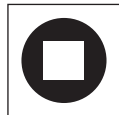
**Differs**



Euro-profile  
cylinder



Round cylinder



Bathroom Lock



Differ Lock



Differ plug (for  
profile cylinder locks)

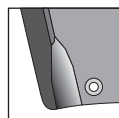
**Available Versions**



Star-Comfort  
for silent lock  
operation



Whisper-Comfort  
for silent lock  
operation

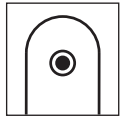


Silent-Comfort  
for silent lock  
operation

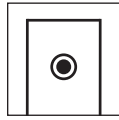


First Class for  
silent lock operation

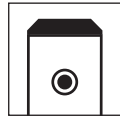
## Other



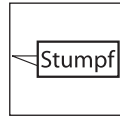
Rounded forend



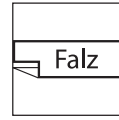
Squared forend



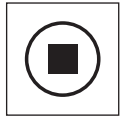
U-shape forend



Flat door



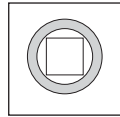
Rebated door



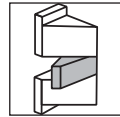
Follower



Fixed follower



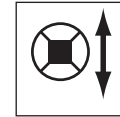
Follower bearing



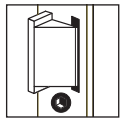
Metal crank latch



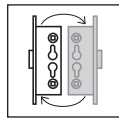
MPA-supervised products



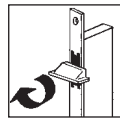
Adjustable follower



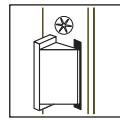
Snib holding function



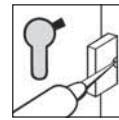
Suitable for right or left handed doors



Suitable for right or left handed doors



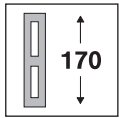
After-Lubrication for latchbolt



After-Lubrication for deadbolt



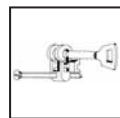
Striking plate standard version



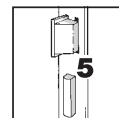
Striking plate with 170 mm system length



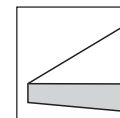
Key



Differ plug (for profile cylinder locks)



Latch- and deadbolt projection



Latchbolt skewness on the backside



