

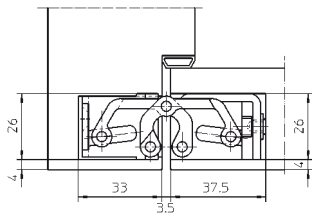
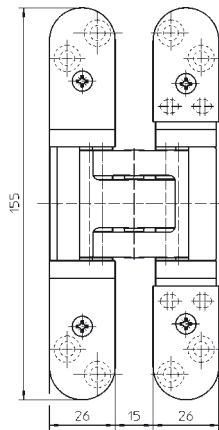
PRODUCT INFO



 **SIMONSWERK**
TECTUS®

TE 526 3D / TE 527 3D

The completely concealed
hinge system made of solid
stainless steel and steel



TE 526 3D

made of solid stainless steel for unrebated heavy-duty doors

Hinge system up to 120 kg

Product features

- completely concealed hinge system
- for timber, steel or aluminium frames
- for unrebated heavy-duty doors
- maintenance-free slide bearings
- 3D adjustable (side +/- 3.0 mm, height +/- 3.0 mm, compression +/- 1.0 mm)
- Material: stainless steel

Technical details

Load capacity	i 2 hinges per door leaf (1x2m)	120.0 kg
Overall length		155.0 mm
Width (door)		26.0 mm
Width (frame)		26.0 mm
Cutter diameter		24.0 mm
Opening angle		180° degree

Finish

Stainless steel satin brushed

Combination

Receiver	Casing frame	TE 525 3D FZ/1
	Steel frame	TE 525 3D SZ

Installation Tools

	Universal milling frame
	Drilling jig TECTUS TE 525 3D
	Frame / Door
	Template 5 250547 6

Detailed information in our PRODUCTSELECTOR at www.simonswerk.com

Functional areas

fire resistance, smoke resistance, soundproof, burglar resistance

Note

i The load capacity mentioned above refers to the use of 2 hinges per door leaf (1 x 2 m). Finger protection on the hinge side due to a small gap between door and frame.

TE 527 3D

made of material steel for unrebated heavy-duty doors

Product features

- completely concealed hinge system
- for timber, steel or aluminium frame
- for unrebated heavy-duty doors
- maintenance-free slide bearings
- 3D adjustable (side +/- 3.0 mm, height +/- 3.0 mm, compression +/- 1.0 mm)
- Material: steel